

R:\Lorain\Township\ELYRIA\BMD\ISU\Shomet Lot Split.dwg: 11/23/15 - 2:44pm: HASURVEYOR

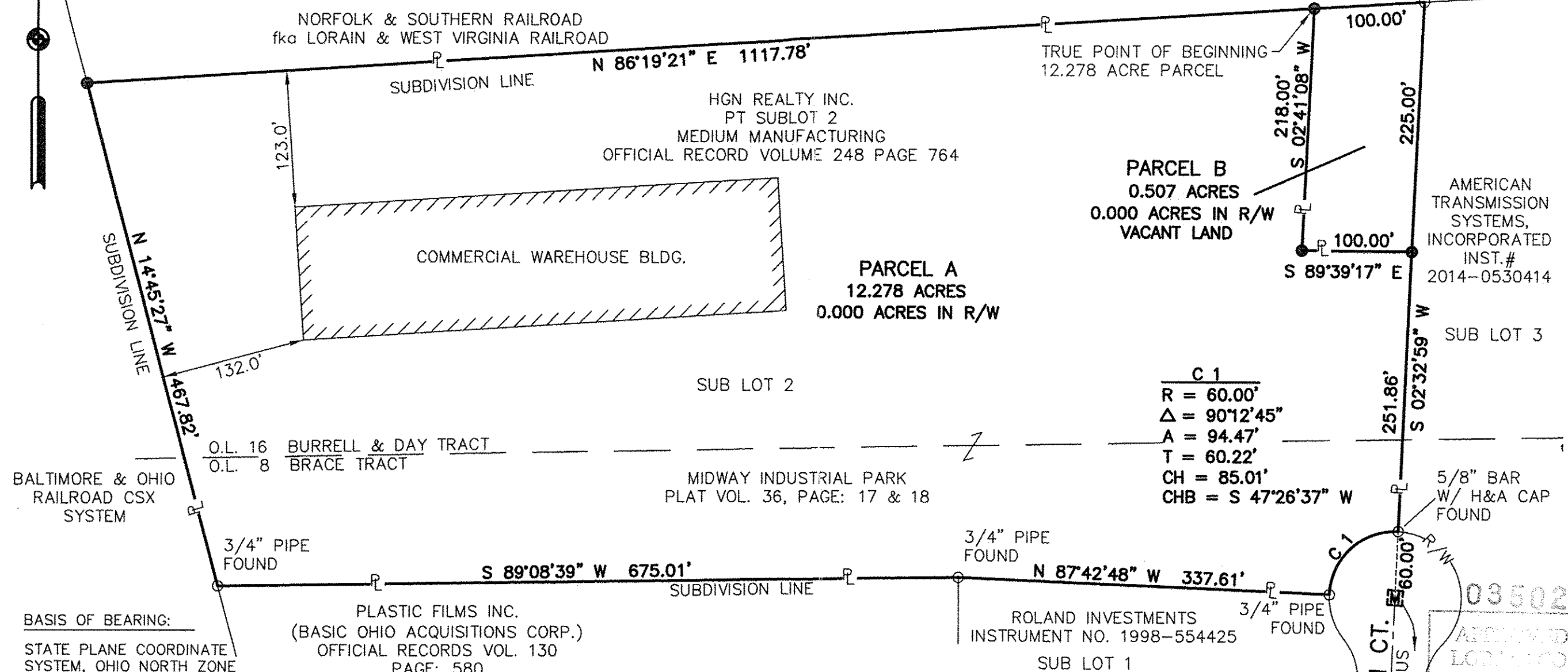
06-22-016 000-013 Scan # 48832

014 POINT OF BEGINNING
12.278 ACRE PARCEL.
0.507 ACRE PARCEL
1" PIPE FOUND
0.22'SOUTH 0.25' EAST

APPROVED BY PLANNING COMMISSION
CITY OF ELYRIA, OH
NO PLAT REQUIRED DATE
Philip M. Laska 12/2/15

2015 MAR 23 PM 2 STATE OF OHIO

LOT SPLIT
12.278 ACRE TRACT AND A 0.507 ACRE TRACT
SITUATED IN THE CITY OF ELYRIA, COUNTY OF LORAIN,
MIDWAY INDUSTRIAL PARK



C 1

R =	60.00'
Δ =	90°12'45"
A =	94.47'
T =	60.22'
CH =	85.01'
CHB =	S 47°26'37" W

BASIS OF BEARING:
STATE PLANE COORDINATE
SYSTEM, OHIO NORTH ZONE
(3401), NAD 83, 2007
ADJUSTMENT.

LEGEND:

- ☐ MONUMENT BOX
- MONUMENT FOUND AS NOTED
- 5/8" REBAR WITH "H&A" CAP SET
- ⊕ CENTERLINE
- ℙ PROPERTY LINE

DATA USED:

LOAIN COUNTY AUDITOR'S GIS INTERNET MAPS
PLATS AND DEEDS AS NOTED
HAMMONTREE & ASSOC. LTD. SURVEY OF 2014

O.L. 16 BURRELL & DAY TRACT
O.L. 8 BRACE TRACT

PLASTIC FILMS INC.
(BASIC OHIO ACQUISITIONS CORP.)
OFFICIAL RECORDS VOL. 130
PAGE: 580

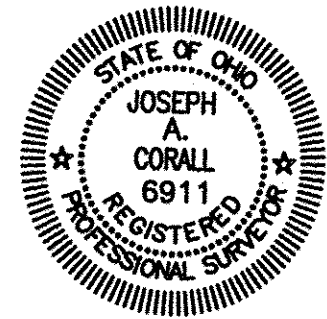
MIDWAY INDUSTRIAL PARK
PLAT VOL. 36, PAGE: 17 & 18

ROLAND INVESTMENTS
INSTRUMENT NO. 1998-554425
SUB LOT 1

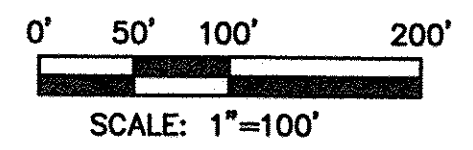
HAMMONTREE & ASSOCIATES, LIMITED
SURVEY DATE - 8/11/2015

CERTIFICATION

I HEREBY CERTIFY THAT I HAVE SURVEYED THE LAND SHOWN ON THIS PLAT, AND THAT THIS PLAT IS A CORRECT REPRESENTATION OF THE LAND SURVEYED THEREOF, AND THAT I HAVE FOUND OR SET THE MONUMENTATION SHOWN ON THIS PLAT. ALL OF MY WORK CONTAINED HEREIN WAS CONDUCTED IN ACCORDANCE WITH OHIO ADMINISTRATIVE CODE 4733-37 COMMONLY KNOWN AS "A MINIMUM STANDARDS FOR BOUNDARY SURVEYS IN THE STATE OF OHIO" UNLESS OTHERWISE NOTED. THE WORDS I AND MY AS USED HEREIN ARE TO MEAN EITHER MYSELF OR SOMEONE WORKING UNDER MY DIRECT SUPERVISION.



Joseph A. Corall
JOSEPH A. CORALL, P.S. #6911
11-24-2015



HAMMONTREE & ASSOCIATES, LIMITED
ENGINEERS, PLANNERS, SURVEYORS
5233 STONEHAM RD. NORTH CANTON, OH 44720
PHN: (330) 499-8817 FAX: (330) 499-0149
TOLL FREE: 1-800-394-8617
www.hammontree-engineers.com

LOT SPLIT
FOR: AMERICAN TRANSMISSIONS SYSTEMS, INCORPORATED
LOCATED IN THE MIDWAY INDUSTRIAL PARK
CITY OF ELYRIA, LORAIN COUNTY, OHIO

DESIGN BY: MAP
DRAWN BY: JAC
REVIEWED BY: G12
FIELD BOOK: 44
BOOK PAGE: 44
DATE: 8/11/15

SCALE HORIZ: 1"=100'

APPROVED
LORAIN CO. MAP # 16-03502
DATE 4-5-16
PAGE 6-22
BY JHartfeld
#16-03502

1 OF 1