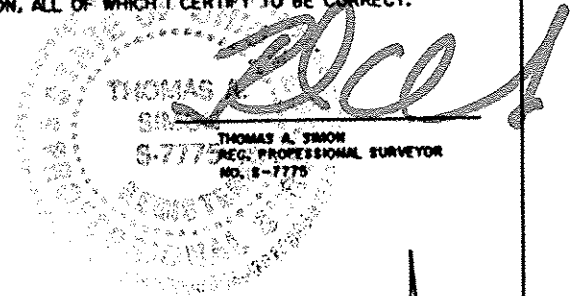


DIMENSIONS SHOWN ON THIS PLAT ARE EXPRESSED IN FEET AND DECIMAL PARTS THEREOF. ALL BEARINGS ARE TO AN ASSUMED MERIDIAN AND ARE USED TO INDICATE ANGLES ONLY. PERMANENT MONUMENTS WERE FOUND OR SET AT ALL POINTS INDICATED HEREON, ALL OF WHICH I CERTIFY TO BE CORRECT.

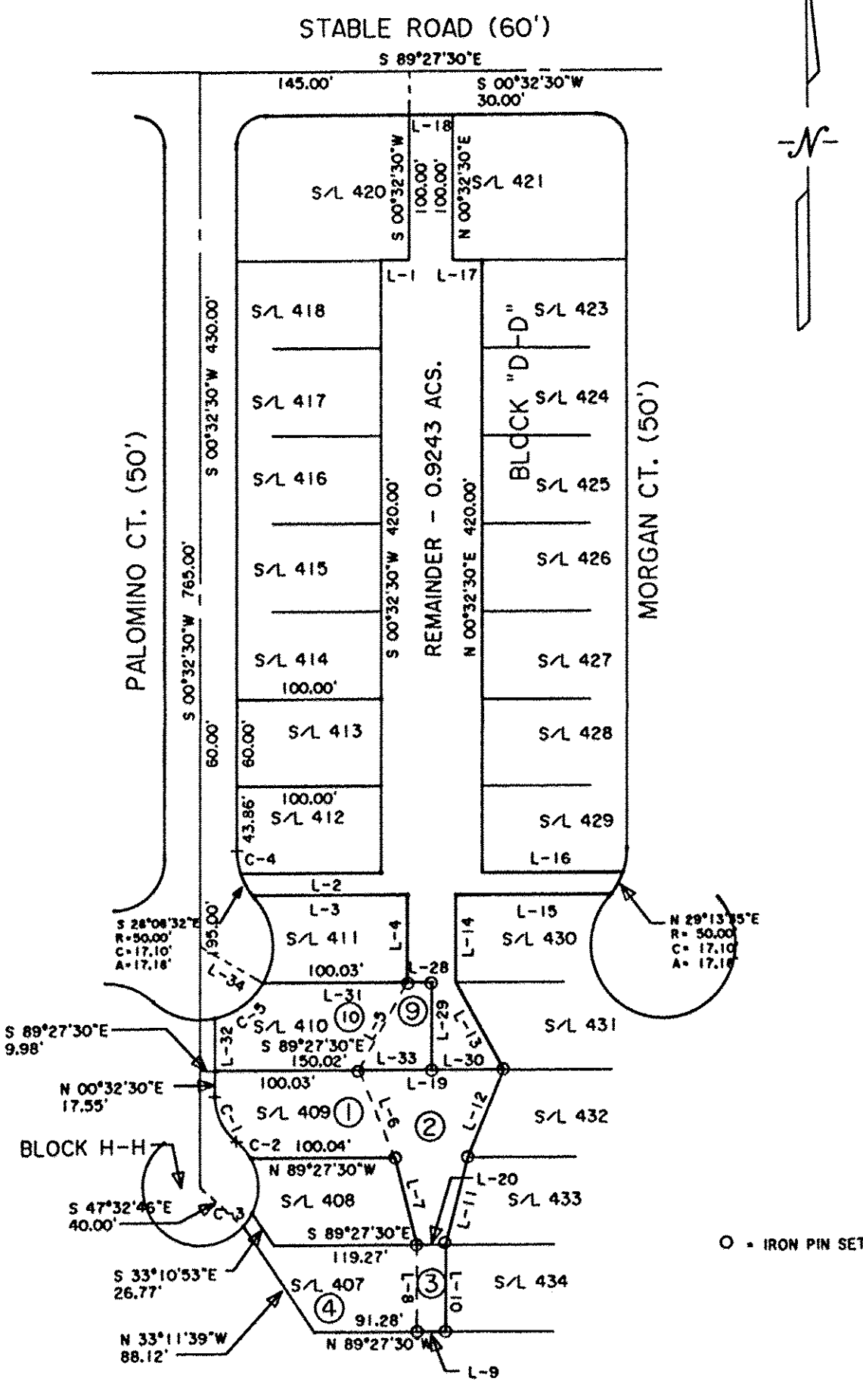


CURVE	RADIUS	TANGENT	LENGTH	DELTA	DEGREE	CHORD	CH. BEARING
C-1	40.00'	19.21'	35.82'	51°18'40"	143°14'22"	34.64'	N 25°08'06"W
C-2	40.00'	7.53'	14.89'	21°19'56"	143°14'22"	14.81'	N 40°07'28"W
C-3	40.00'	5.48'	10.89'	15°35'31"	143°14'22"	10.85'	N 34°39'28"E
C-4	50.00'	8.29'	16.43'	18°50'11"	114°36'53"	16.36'	N 08°52'35"W
C-5	50.00'	22.51'	42.31'	48°28'46"	114°35'30"	41.06'	N 54°47'00"E

COURSE	BEARING	DISTANCE
L-1	N 89°27'30"W	20.00'
L-2	N 89°27'30"W	97.32'
L-3	S 89°27'30"E	107.45'
L-4	S 00°32'30"W	60.00'
L-5	S 29°35'09"W	68.63'
L-6	S 21°48'12"E	64.87'
L-7	S 13°47'48"E	61.93'
L-8	S 00°32'30"W	60.00'
L-9	S 89°27'30"E	19.97'
L-10	N 00°32'30"E	60.00'
L-11	N 14°52'48"E	61.93'
L-12	N 22°53'12"E	64.87'
L-13	N 28°30'09"W	68.63'
L-14	N 00°32'30"E	60.00'
L-15	S 89°27'30"E	107.45'
L-16	N 89°27'30"W	97.32'
L-17	N 89°27'30"W	20.00'
L-18	N 89°27'30"W	30.00'
L-19	S 89°27'30"E	99.97'
L-20	S 89°27'30"E	19.97'
L-21	S 89°27'30"E	35.00'
L-22	N 89°27'30"W	35.00'
L-23	N 89°27'30"W	35.00'
L-24	S 89°27'30"E	135.00'
L-25	S 89°27'30"E	135.00'
L-26	N 00°32'30"E	60.00'
L-27	N 00°32'30"E	60.00'
L-28	S 89°27'30"E	16.67'
L-29	S 00°32'30"W	60.00'
L-30	S 89°27'30"E	49.98'
L-31	S 89°27'30"E	116.70'
L-32	N 00°32'30"E	36.01'
L-33	N 89°27'30"W	49.99'
L-34	S 59°27'23"E	50.00'

- ① COMBINATION NO. 1
0.2986 ACS.
- ② SPLIT NO. 1
0.1524 ACS.
- ③ SPLIT NO. 2
0.0275 ACS.
- ④ COMBINATION NO. 2
0.1582 ACS.
- ⑨ SPLIT NO. 5
0.0459 ACS.
- ⑩ COMBINATION NO. 5
0.1947 ACS.

03462
 APPROVED
 LORAIN CO.
 MAP DEPT
 DATE 12-21-15
 PAGE 15-00-098
 BY J. Hatfield
 #15-03462



BASIS OF BEARINGS IS THE CENTERLINE OF PALOMINO COURT (SOUTH 00°32'30" WEST). IRON PINS SET ARE 5/8" DIAMETER, 30" LONG WITH PLASTIC CAPS "T. SIMON, S-7775".

THOMAS SIMON & ASSOCIATES, INC.
 PROFESSIONAL LAND SURVEYORS
 150 SOUTH OLIVE STREET
 ELYRIA, OHIO 44035
 (440) 327-2925
 FAX 327-2964

PLAT OF BOUNDARY SURVEY
 SPLIT & COMBINATION
 FOR
 LEH PROPERTIES, INC.
 JOHN & CAROLYN HAMMETT
 LAURA BREWER
 ARTHUR BOWMAN
 BEING KNOWN AS ALL OF BLOCK D-D, AND ALL OF SUBLOT NOS. 407, 409, 410, 412 AND 413 IN THE PHEASANT RUN VILLAGE SUBDIVISION NO. 1 RECORDED IN PLAT VOLUME 27 PAGE 16 AND PART OF ORIGINAL LAGRANGE TOWNSHIP LOT NO. 98

COUNTY OF LORAIN STATE OF OHIO
 OCTOBER, 2015 SCALE: 1" = 100'

DATE OF SURVEY: AUGUST, 2005

2005-057
 2015-053