



DIMENSIONS SHOWN ON THIS PLAT ARE EXPRESSED IN FEET AND DECIMAL PARTS THEREOF. ALL BEARINGS ARE TO AN ASSUMED MERIDIAN AND ARE USED TO INDICATE ANGLES ONLY. PERMANENT MONUMENTS WERE FOUND OR SET AT ALL POINTS INDICATED HEREON, ALL OF WHICH I CERTIFY TO BE CORRECT.

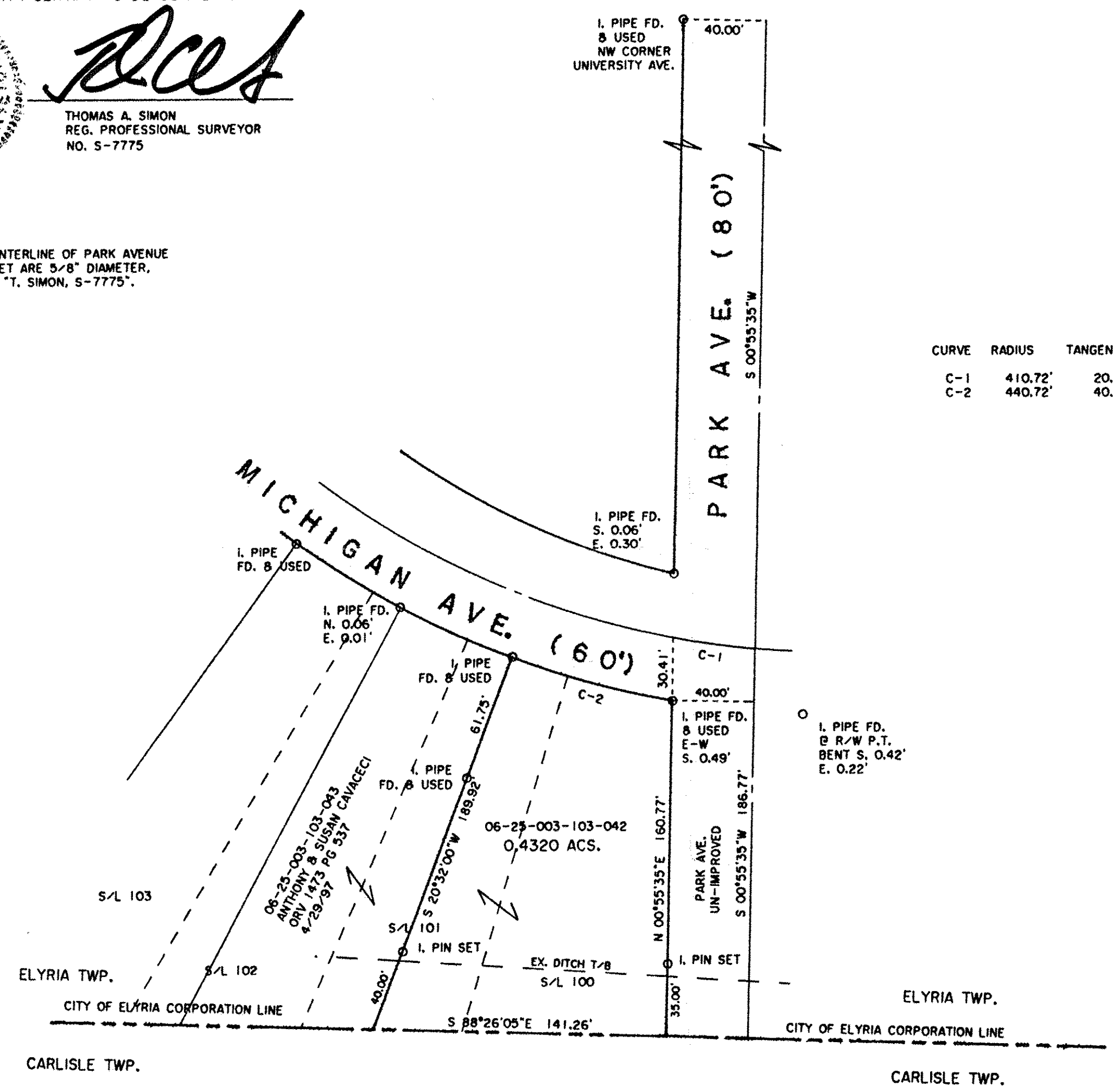


*TAS*  
 THOMAS A. SIMON  
 REG. PROFESSIONAL SURVEYOR  
 NO. S-7775

BASIS OF BEARINGS IS THE CENTERLINE OF PARK AVENUE (S 00°55'35" W). IRON PINS SET ARE 3/8" DIAMETER, 30" LONG WITH PLASTIC CAPS "T. SIMON, S-7775".

CURVE	RADIUS	TANGENT	LENGTH	DELTA	DEGREE	CHORD	CH.BEARING
C-1	410.72'	20.17'	40.31'	5°37'23"	13°57'00"	40.29'	N 82°09'24"W
C-2	440.72'	40.16'	80.09'	10°24'45"	13°00'02"	79.98'	N 74°48'24"W

APPROVED  
 LORAIN CO.  
 MAP DEPT  
 DATE 8-6-15  
 PAGE 6-139  
 BY R. MAINES  
 #15-03271-D



06-25-003-103-042  
 scan# 48678

**THOMAS SIMON & ASSOCIATES, INC.**  
 PROFESSIONAL LAND SURVEYORS

150 SOUTH OLIVE STREET  
 ELYRIA, OHIO 44035

(440) 327-2925  
 FAX 327-2964

**PLAT OF BOUNDARY SURVEY  
 FOR  
 NADINE M. GALLAM, SUCCESSOR TRUSTEE  
 OF THE  
 NADINE M. ROTUNDA REVOCABLE LIVING TRUST**

BEING KNOWN AS PART OF ORIGINAL ELYRIA TOWNSHIP LOT NO. 3, EAST OF BLACK RIVER AND ALL OF SUBLT NO. 100 AND PART OF SUBLT NO. 101 OF UNIVERSITY HEIGHTS SUBDIVISION NO. 1 AS RECORDED IN PLAT VOLUME 22 PAGE 16 OF LORAIN COUNTY RECORDS

CITY OF ELYRIA COUNTY OF LORAIN  
 STATE OF OHIO

JULY, 2015 SCALE: 1" = 50'