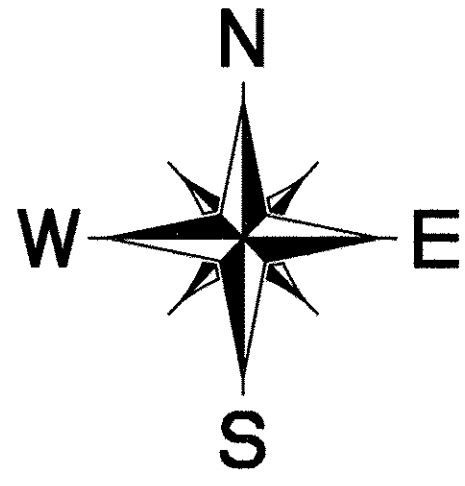


Plat of Partial Re-Survey, Combination & Lot Split

JMF Land Co. LLC.

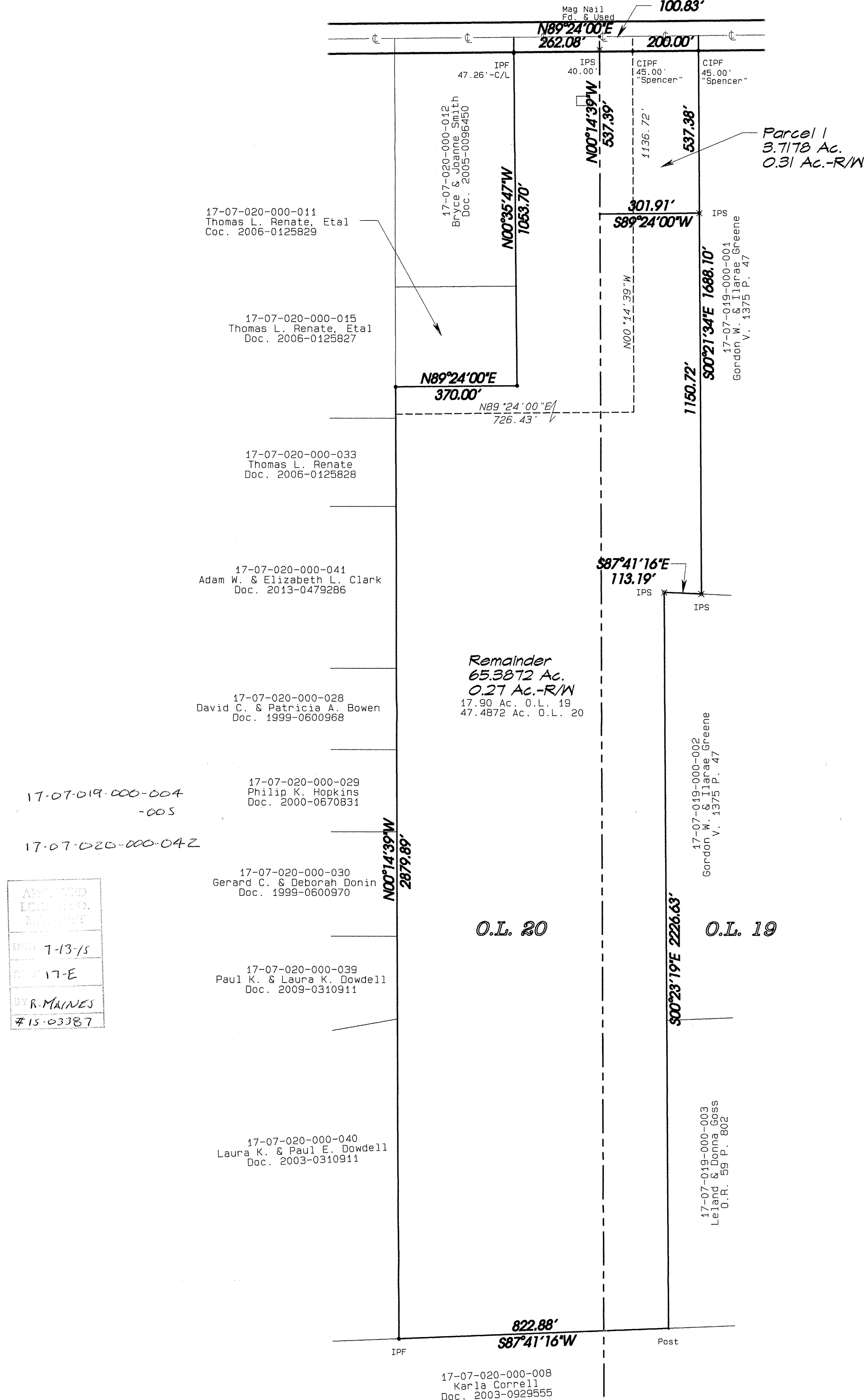
69.1050 Acres



Brighton Twp. (T3N, R19W)
Lorain Co.

Tract 7, O.L. 19 & 20
Ohio

State Route 18 90'



17-07-019-000-004
-005

17-07-020-000-04Z

APPROVED
LCM (P.O.)
RECORD

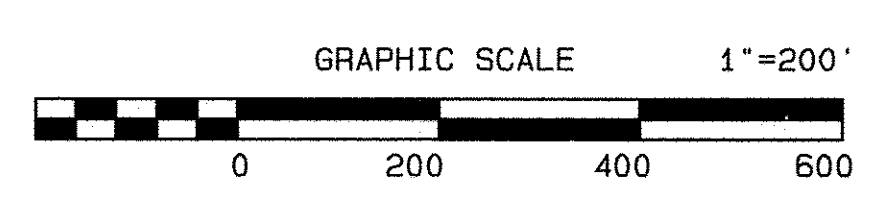
BOOK 7-13-15

PAGE 17-E

R. MAINES

15-03387

Prior survey by William Lee Spencer in May 1996



Rev. 7-13-15 Acreage breakdown.

