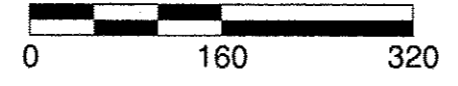


SCALE IN FEET

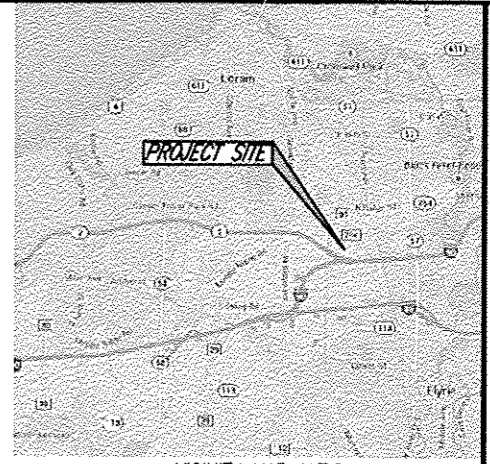


03334
 APPROVED
 LORAIN CO.
 MAP DEPT
 DATE 1-7-15
 PAGE 6-64
 BY J.H. Hatfield
 15-03334

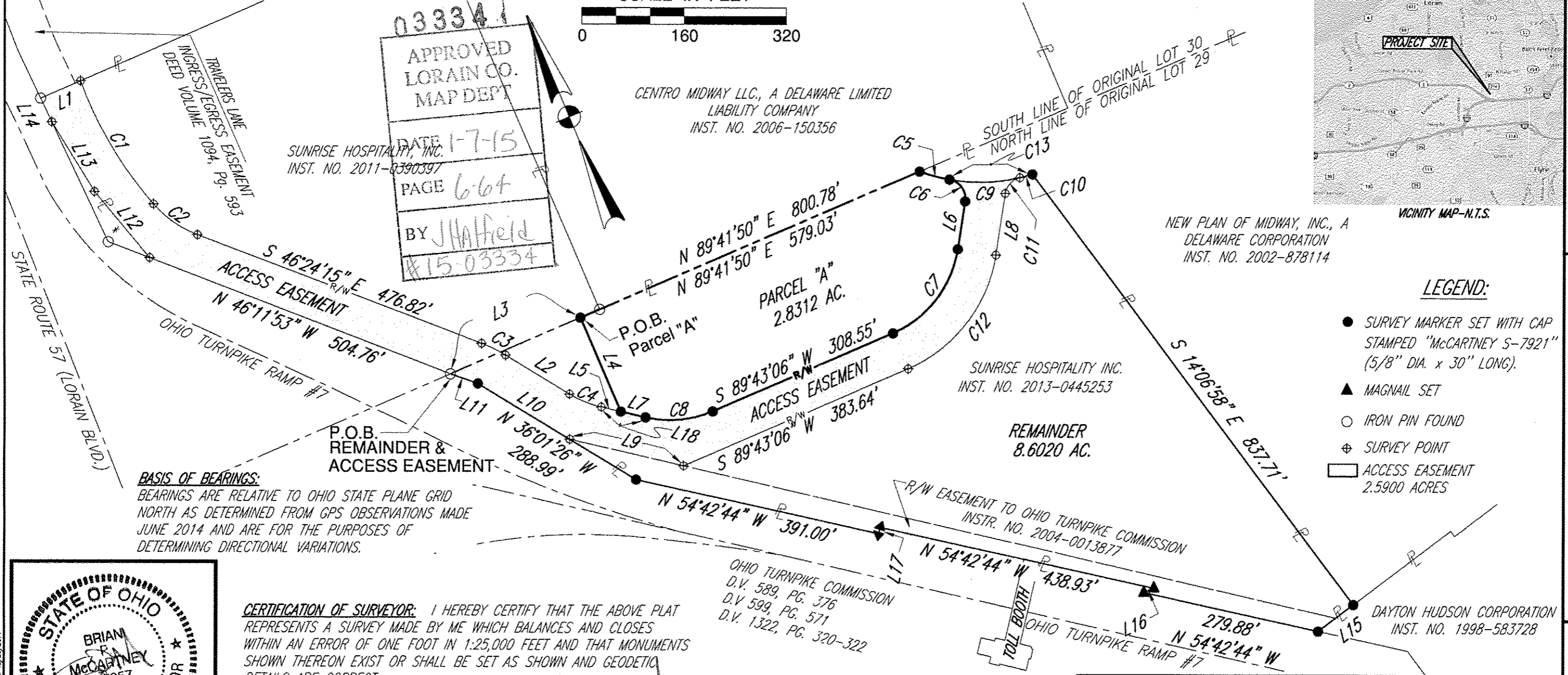
CENTRO MIDWAY LLC., A DELAWARE LIMITED LIABILITY COMPANY
 INST. NO. 2006-150356

SUNRISE HOSPITALITY, INC.
 INST. NO. 2011-0390397

NEW PLAN OF MIDWAY, INC., A DELAWARE CORPORATION
 INST. NO. 2002-878114



VICINITY MAP-N.T.S.



BASIS OF BEARINGS:
 BEARINGS ARE RELATIVE TO OHIO STATE PLANE GRID NORTH AS DETERMINED FROM GPS OBSERVATIONS MADE JUNE 2014 AND ARE FOR THE PURPOSES OF DETERMINING DIRECTIONAL VARIATIONS.

- LEGEND:**
- SURVEY MARKER SET WITH CAP STAMPED "MCCARTNEY S-7921" (5/8" DIA. x 30" LONG).
 - ▲ MAGNAIL SET
 - IRON PIN FOUND
 - ⊕ SURVEY POINT
 - ACCESS EASEMENT 2.5900 ACRES

CERTIFICATION OF SURVEYOR: I HEREBY CERTIFY THAT THE ABOVE PLAT REPRESENTS A SURVEY MADE BY ME WHICH BALANCES AND CLOSES WITHIN AN ERROR OF ONE FOOT IN 1:25,000 FEET AND THAT MONUMENTS SHOWN THEREON EXIST OR SHALL BE SET AS SHOWN AND GEODETIC DETAILS ARE CORRECT.

DATE: 12/30/14

[Signature]
 BRIAN P. MCCARTNEY P.E. P.S.
 OHIO REGISTERED SURVEYOR NO. 7957



LINE	BEARING	DISTANCE
L1	S 89°29'55" W	68.31'
L2	N 36°01'26" W	116.95'
L3	N 89°41'50" E	221.75'
L4	S 00°30'43" E	158.58'
L5	N 54°07'21" W	31.27'
L6	S 31°32'39" W	75.45'
L7	S 54°07'21" E	39.94'
L8	S 31°32'39" W	97.10'
L9	S 54°07'21" E	182.93'
L10	N 36°01'26" W	167.97'
L11	N 48°23'20" W	45.74'
L12	N 17°01'56" W	134.76'
L13	S 08°46'38" E	127.58'
L14	S 02°26'55" E	40.86'
L15	S 75°53'11" W	68.92'
L16	N 89°36'30" E	17.15'
L17	S 35°17'16" W	10.00'
L18	S 54°07'21" E	71.21'

APPROVED BY PLANNING COMMISSION
 CITY OF ELYRIA, OH
 NO PLAT REQUIRED. DATE 1/6/15
[Signature]

DRAWN BY K.E. MCCARTNEY & ASSOCIATES INC., JOB TITLE: CS-654 SHEET NAME: LOT SPLIT SCALE: 1" = 160' DATE: 12/29/2014

528 E. Broad Street
 Elyria, Ohio 44035
 Phone: 440/525-9698
 Fax: 440/525-3844

KEM
 K.E. McCartney & Associates Inc.
 Engineers • Planners • Surveyors

SUNRISE HOSPITALITY

LOT SPLIT BOUNDARY SURVEY
 BEING A PART OF ORIGINAL LOT NO. 29, ELYRIA TOWNSHIP,
 WEST OF BLACK RIVER, CITY OF ELYRIA, LORAIN COUNTY, OHIO