

NOTE: SEE SHEET 2 FOR UTILITIES
SEE SHEET 3 FOR COMBINED PARCELS

-005
W. ORRIN ELDRED, II
ORV 329 P. 189

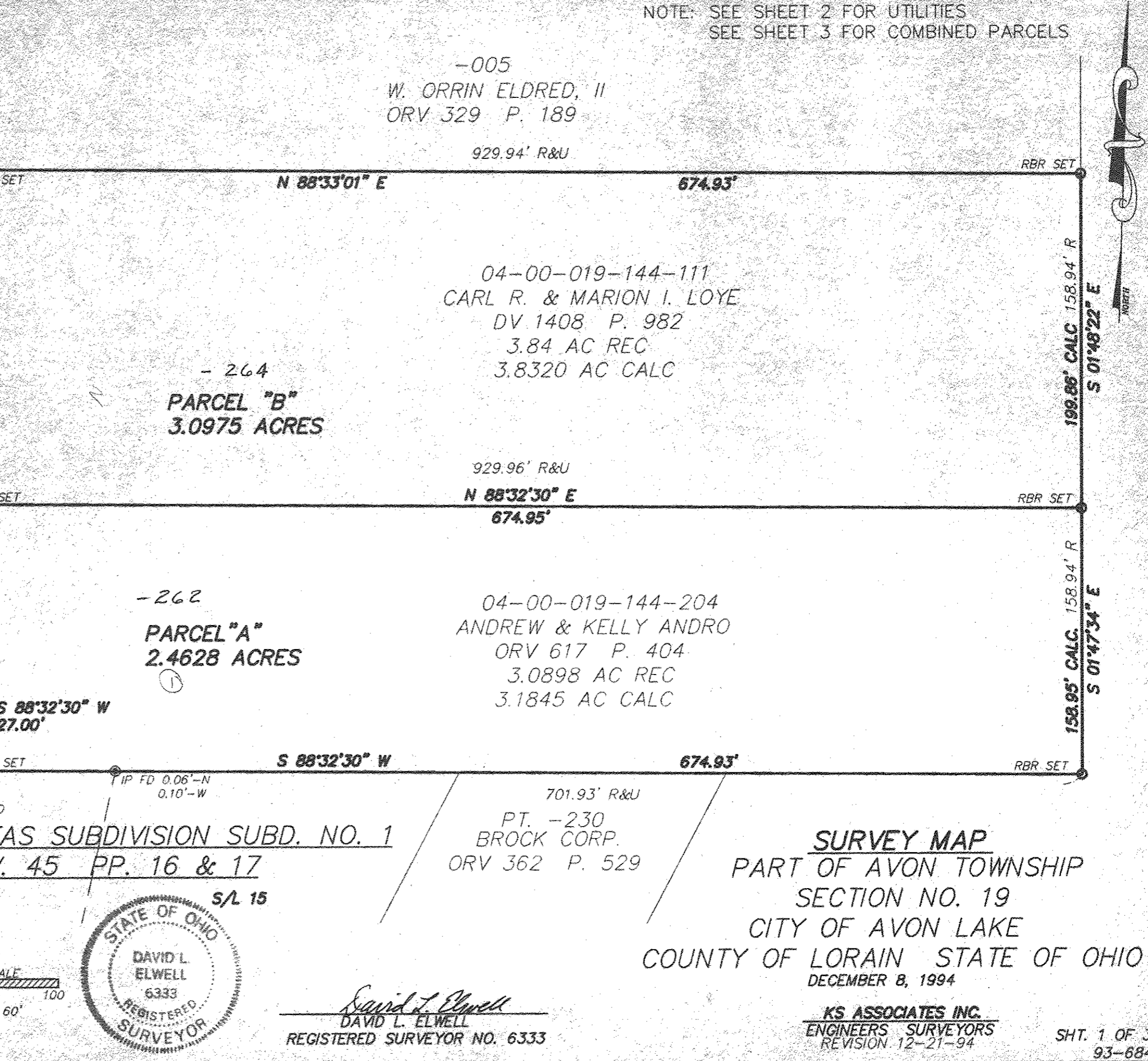
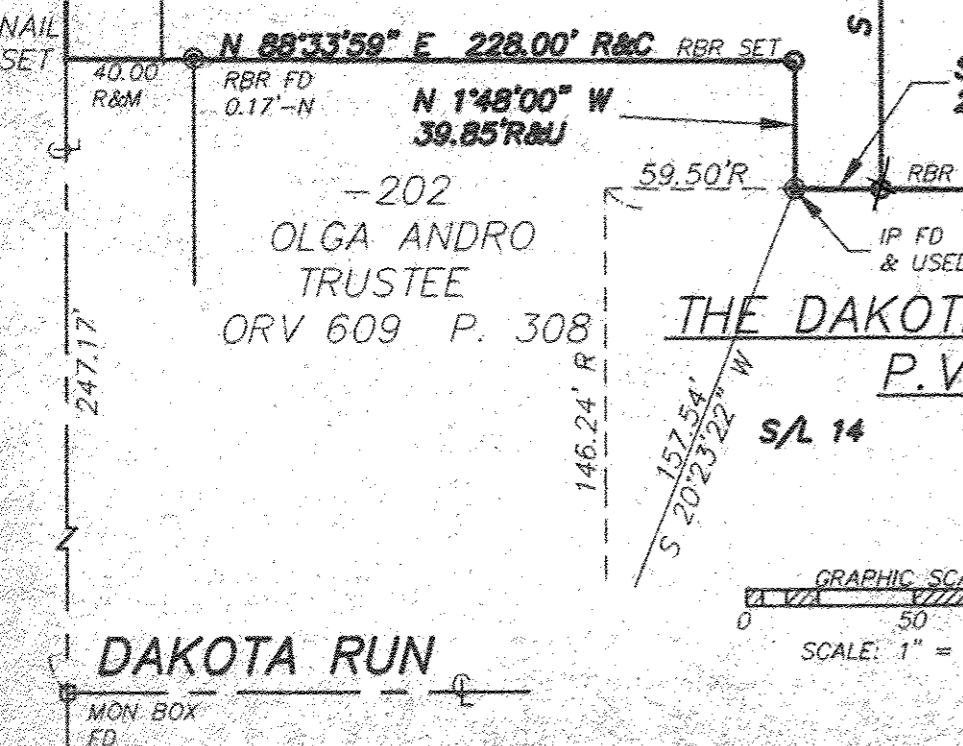
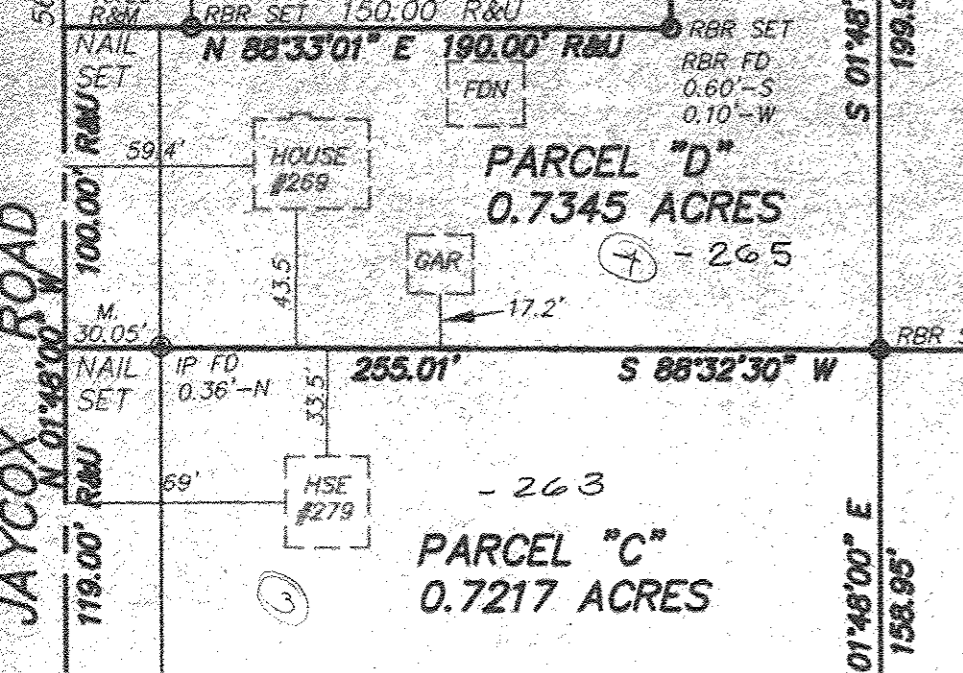
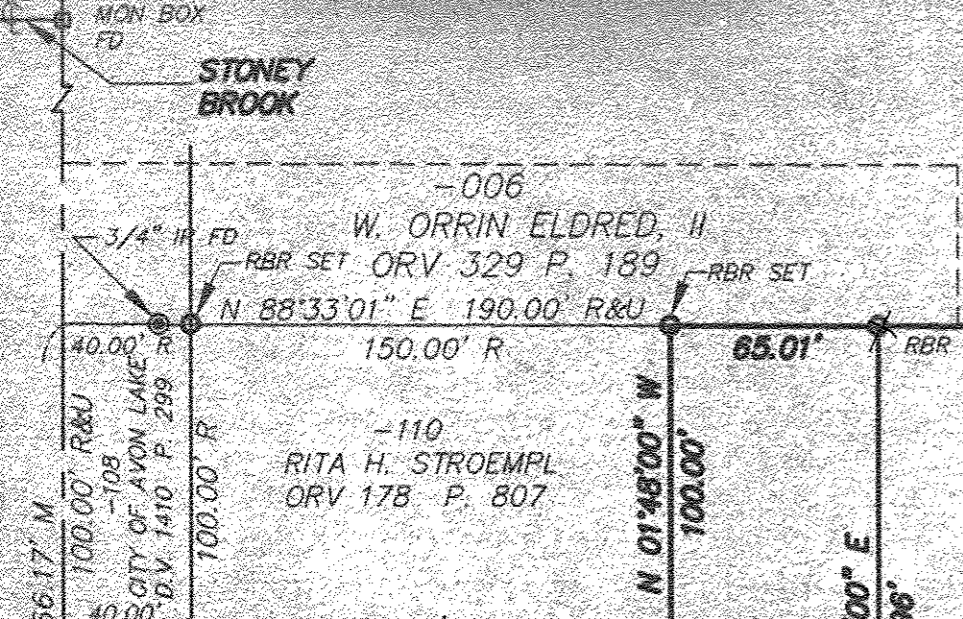
929.94' R&U

04-00-019-144-111
CARL R. & MARION I. LOYE
DV 1408 P. 982
3.84 AC REC
3.8320 AC CALC

- 264
PARCEL "B"
3.0975 ACRES

929.96' R&U
N 88°32'30" E
674.95'

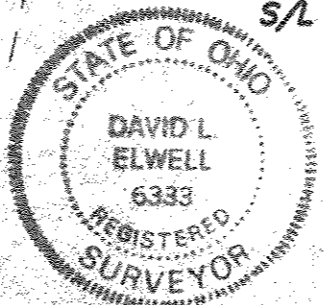
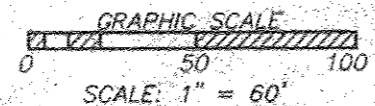
-262
PARCEL "A"
2.4628 ACRES
04-00-019-144-204
ANDREW & KELLY ANDRO
ORV 617 P. 404
3.0898 AC REC
3.1845 AC CALC



THE DAKOTAS SUBDIVISION SUBD. NO. 1
P.V. 45 PP. 16 & 17

701.93' R&U
PT. -230
BROCK CORP.
ORV 362 P. 529

SURVEY MAP
PART OF AVON TOWNSHIP
SECTION NO. 19
CITY OF AVON LAKE
COUNTY OF LORAIN STATE OF OHIO
DECEMBER 8, 1994



David L. Elwell
DAVID L. ELWELL
REGISTERED SURVEYOR NO. 6333

KS ASSOCIATES INC.
ENGINEERS SURVEYORS
REVISION 12-21-94