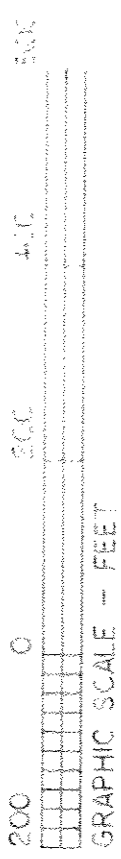


Scan# 48492

APPROVED BY PLANNING COMMISSION
CITY OF ELYRIA, OH
NO PLAT REQUIRED DATE 9/16/14
Philip A. Field

PLAT OF SURVEY & SPLIT FOR THE CITY OF ELYRIA JOHN J. LASKO, JR., TRUSTEE

BEING KNOWN AS PART OF ORIGINAL ELYRIA TOWNSHIP
LOT NO. 11, WEST OF BLACK RIVER (TRACT 24)
CITY OF ELYRIA COUNTY OF CRAW
STATE OF OHIO
JANUARY, 2010 SCALE: 1" = 200'



BASIS OF BEARINGS IS THE CENTERLINE OF LEO BULLOCKS PARKWAY (NORTH 75°09'34" EAST FROM AN ASSUMED MERIDIAN) DIAMETER, 30" LONG WITH PLASTIC CAPS TO BE SET IN THE CENTERLINE.

CENTERLINE CURVE DATA

CURVE	RADIUS	TANGENT	LENGTH	DELTA	DEGREE	CHORD	CH-BEARING
C-1	2000.00	313.08	82.14	17°07'40"	2°51'53"	618.65	N 68°15'15" E
C-2	1000.00	293.27	57.55	32°41'24"	2°51'53"	582.84	N 73°42'48" E
C-3	2000.00	15.57	33.13	0°06'57"	2°51'53"	33.13	N 74°41'13" E

RIGHT-OF-WAY CURVE DATA

CURVE	RADIUS	TANGENT	LENGTH	DELTA	DEGREE	CHORD	CH-BEARING
C-3	1075.00	3.80	7.80	0°24'18"	5°19'47"	7.80	S 59°33'03" W
C-4	1075.00	15.35	34.71	2°03'48"	5°19'47"	38.71	S 59°24'00" W
C-5	1923.00	275.95	544.27	16°11'59"	2°45'40"	542.45	S 65°23'01" W
C-6	2076.00	318.50	631.58	17°29'12"	2°45'40"	628.24	N 65°02'17" E

PARCEL NO. 1 - LINE DATA

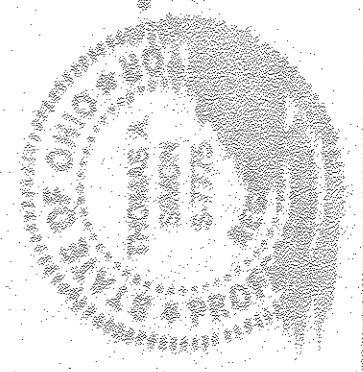
COURSE	BEARING	DISTANCE
L-1	S 00°52'15" W	10.30'

REMAINDER
50.8666 ACS.

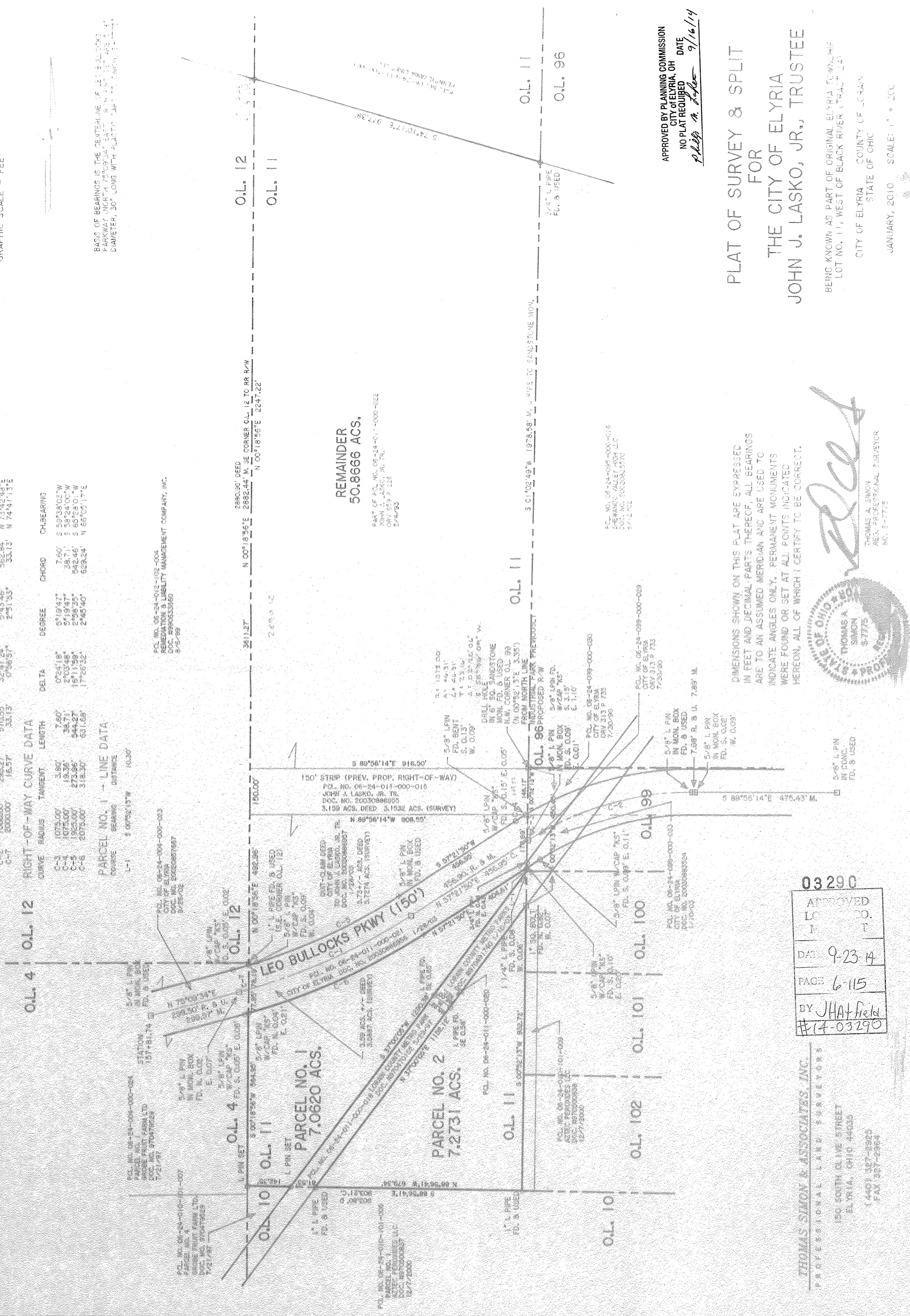
PART OF P.C. NO. 06-24-011-000-022
JOHN J. LASKO, JR. TR.
ORV 553 P 128
2/4/93

P.C. NO. 06-24-009-000-030
SHEWANEE VALLEY ASH LLC
2003 AC. 20030003370
5/12/03

THOMAS A. SIMON
REG. PROFESSIONAL SURVEYOR
NO. 5-7775



DIMENSIONS SHOWN ON THIS PLAT ARE EXPRESSED IN FEET AND DECIMAL PARTS THEREOF. ALL BEARINGS ARE TO AN ASSUMED MERIDIAN AND ARE USED TO INDICATE ANGLES ONLY. PERMANENT MONUMENTS WERE FOUND OR SET AT ALL POINTS INDICATED HEREON, ALL OF WHICH I CERTIFY TO BE CORRECT.



03290

APPROVED
L.C. CO.
M. T.

DATE 9-23-14

PAGE 6-115

BY JHATfield
#14-03290

THOMAS SIMON & ASSOCIATES, INC.
PROFESSIONAL LAND SURVEYORS
150 SOUTH OLIVE STREET
ELYRIA, OHIO 44035
(440) 327-0200
FAX 327-0244