

06-25-032-116-001

Scan # 48450

N

SPRING VALLEY SUBDIVISION NO. 6
PLAT VOLUME 13, PG 16 & 17

HILLIARD ROAD 100'
C.R. 2026.72

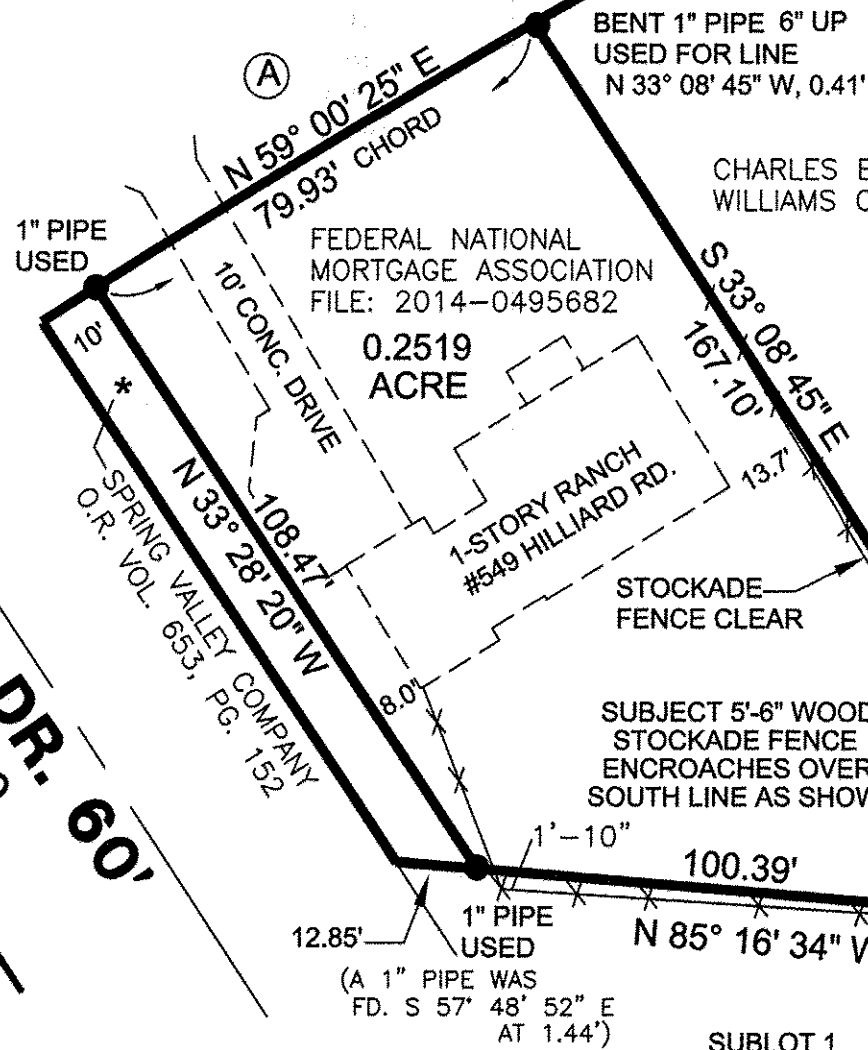
AMBLER DRIVE 50'
C.R. 85.17

LUCILLE DR. 60'
C.R. 230

APPROVED
LORAIN CO.
PLAT
DATE 8-4-14
PAGE 6-69
BY R. HANES
#14-02990-D

CURVE DATA

(A) $\Delta = 2^\circ 19' 00''$
RADIUS = 1976.72'
ARC = 79.93'
TAN = 39.97'
CHORD = 79.93'
CH.BRG. = N 59° 00' 25" E

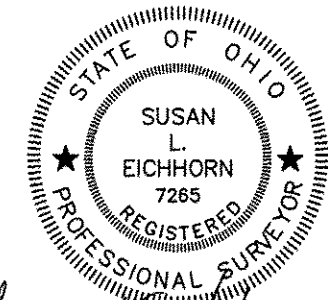
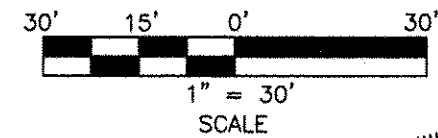


BOUNDARY SURVEY
PART OF ORIGINAL LOT 32
EAST OF BLACK RIVER, NOW
IN THE CITY OF ELYRIA,
COUNTY OF LORAIN, OHIO.

BEARINGS ARE BASED ON THE SOUTHWESTERLY
PROPERTY LINE AS DESCRIBED IN DEED O.R.VOLUME
653, PAGE 152 LORAIN COUNTY RECORDS.

LEGEND

- MONUMENT FOUND AS NOTED.
- REC. = FROM THE RECORDED PLAT



Susan L. Eichhorn
SUSAN L. EICHHORN P.S.7265
DATE 7-07-2014

P.O.B.
NORTHWEST CORNER
SUBLOT 3

SUBLOT 1

PIKEVIEW SUBDIVISION
PLAT VOLUME 19, PG. 27

SUBLOT 2

SUBLOT 3

SUBLOT 4

4123 Weymouth Rd. Medina, OH 44256
Ph. (330)723-2612 Fax (330)722-5327

Corner Stone Professional Land Surveyors, Inc.