

14-E

0.L. 89

# 15790

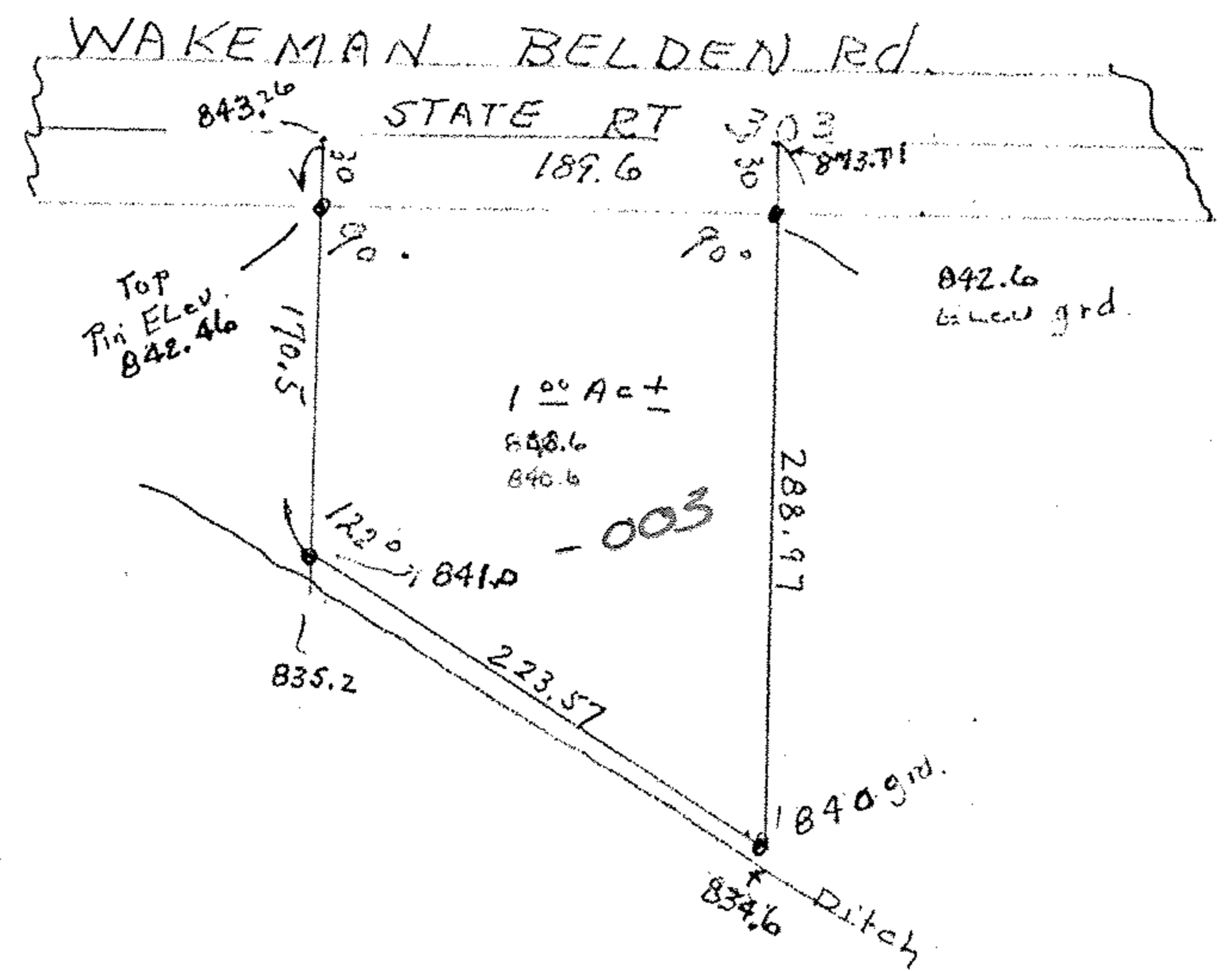
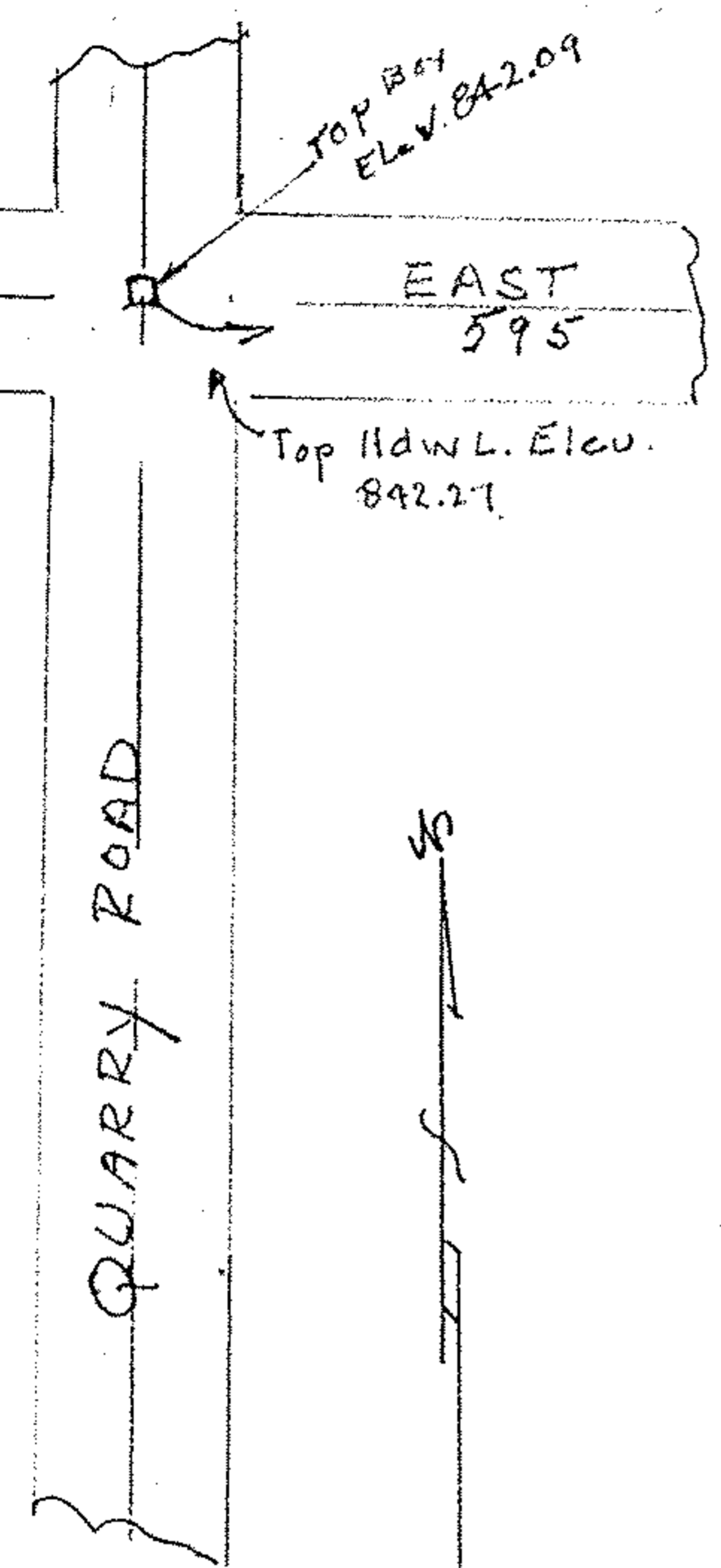
14-00-089-000-

USGS BRINGTON QUAD. Indicates approx ELEV 843.00  
For Int. QUARRY # 303 Scan # 48154 003

08251 #

880-00-H

24/E



Survey Map of Part of Lot 89 Pittsfield Twp. Lorain Co. Ohio  
 Scale 1" = 100' July 24, 1984  
 By Arnold F. Koepf Reg. Surveyor No. 4306

# 15790

APPROVED
LORAIN CO.
MAP DEPT.
DATE 9-7-84
PAGE 14-E
BY <i>Koepf</i>
VOID AFTER 15790

B.M. USED  
 U.S.G.S ELEV. 871.00  
 Corner State Route 511 & 303  
 S.W. Cor Church - NE. corner Church Bldg stamped 871.00

