

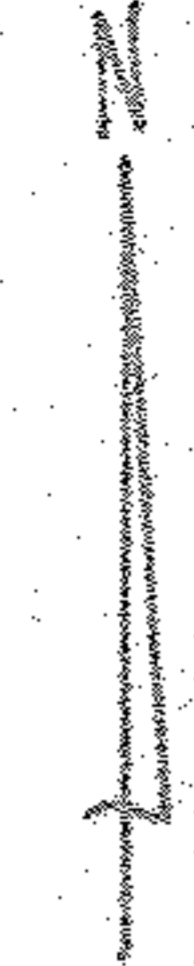
± Sprague Rd.

References as set by
Cuyahoga County Engineers
Used for intersection of E's

11015
12-00-060-A
1-3-1-B

Deed Vol. 98, P. 185

0.L. 61
0.L. 60
North & South
JAQUAY ROAD
286.53 Msd
160.00
126.53
30
0.L. 62
0.L. 61
1382.2 Tobs
N0°09'40"W



N 89° 33' 35" E
2098.20'

Ir. Pin Set Fence
450.00'
12-00-060-000-023
Ir. Pin Set 50' Tacked Stk. Set
852.53'
1648.20'
Ir. Pin Set
397.92'
Ir. Pin Set
397.75'

1.653 Ac.

12-00-060-000-024

Deed Vol. 387, P. 127, Pcl. #1
Deed Vol. 1003, P. 755

12.50 Ac.
DEED & USED

10.847 Ac.

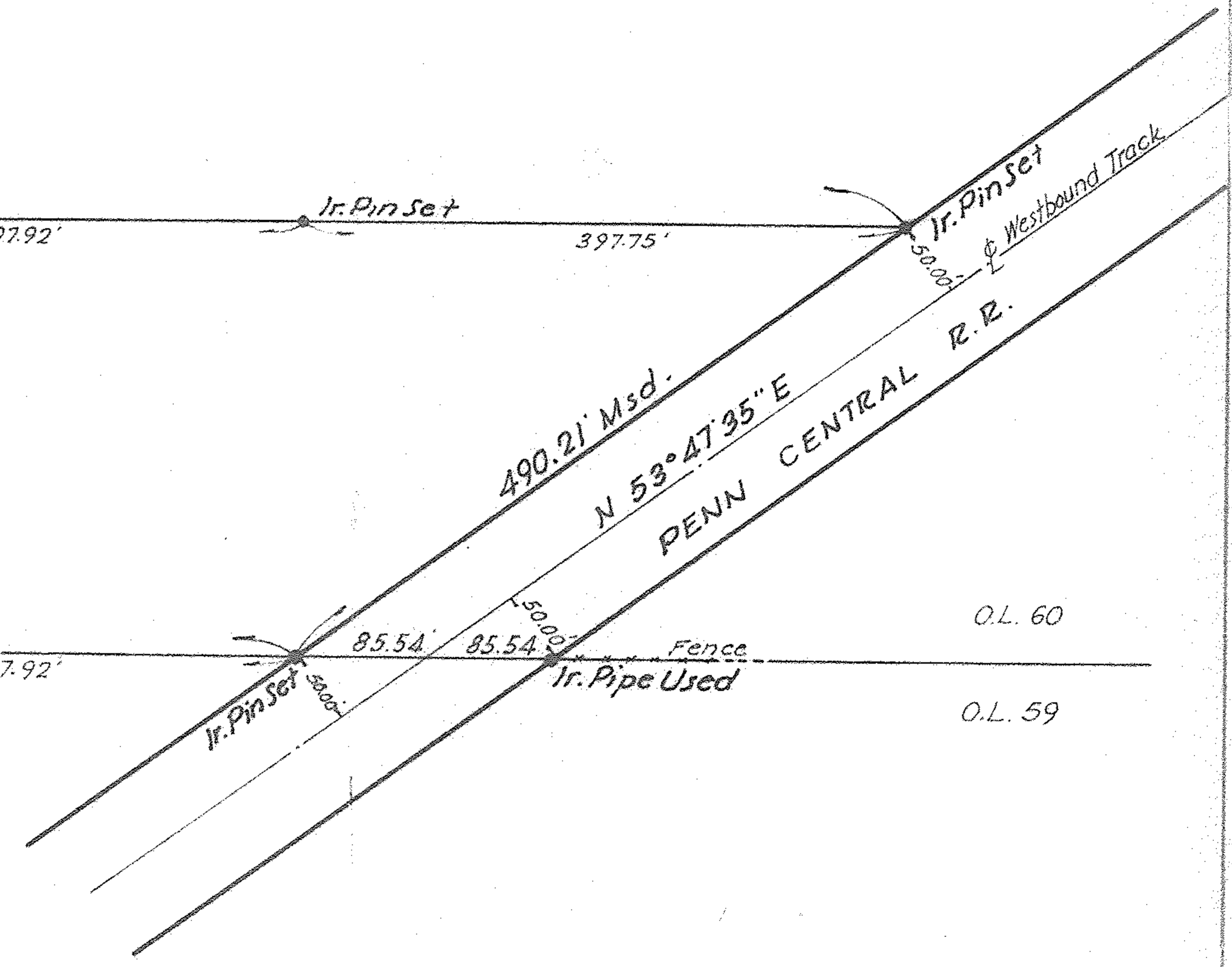
12-00-060-A ± B

450.00'
N 89° 33' 35" E
Ir. Pin Set
160.00'
N. E. S.
Ir. Pin Set

O.L. 60
Ir. Pin Set
502.20'
Ir. Pin Set
1702.65' Obs
802.53'
N 89° 33' 35" E
397.92'

O.L. 59

Stone Mon. Fd. & Used
(Hardhead with D.H.
and 18" deep)



O.L. 60

O.L. 59

Map of Survey
Made For

PATH BUILDING CORP.
Original Columbia Twp. Lot 60
LORAIN COUNTY, OHIO

Order No 7793
F.B. 606 - P. 105 to 113
Scale 1" = 100'
Sept. 1977

WARREN J. ROOT & ASSOCIATES
CIVIL ENGINEERS & SURVEYORS

By: Edward P. Gibbons
Registered Surveyor No 3740



± Osborne Road
R.R. Spike Used
Lorain County Engineer
References Checked