

12-00-055-101
- 053
- 054

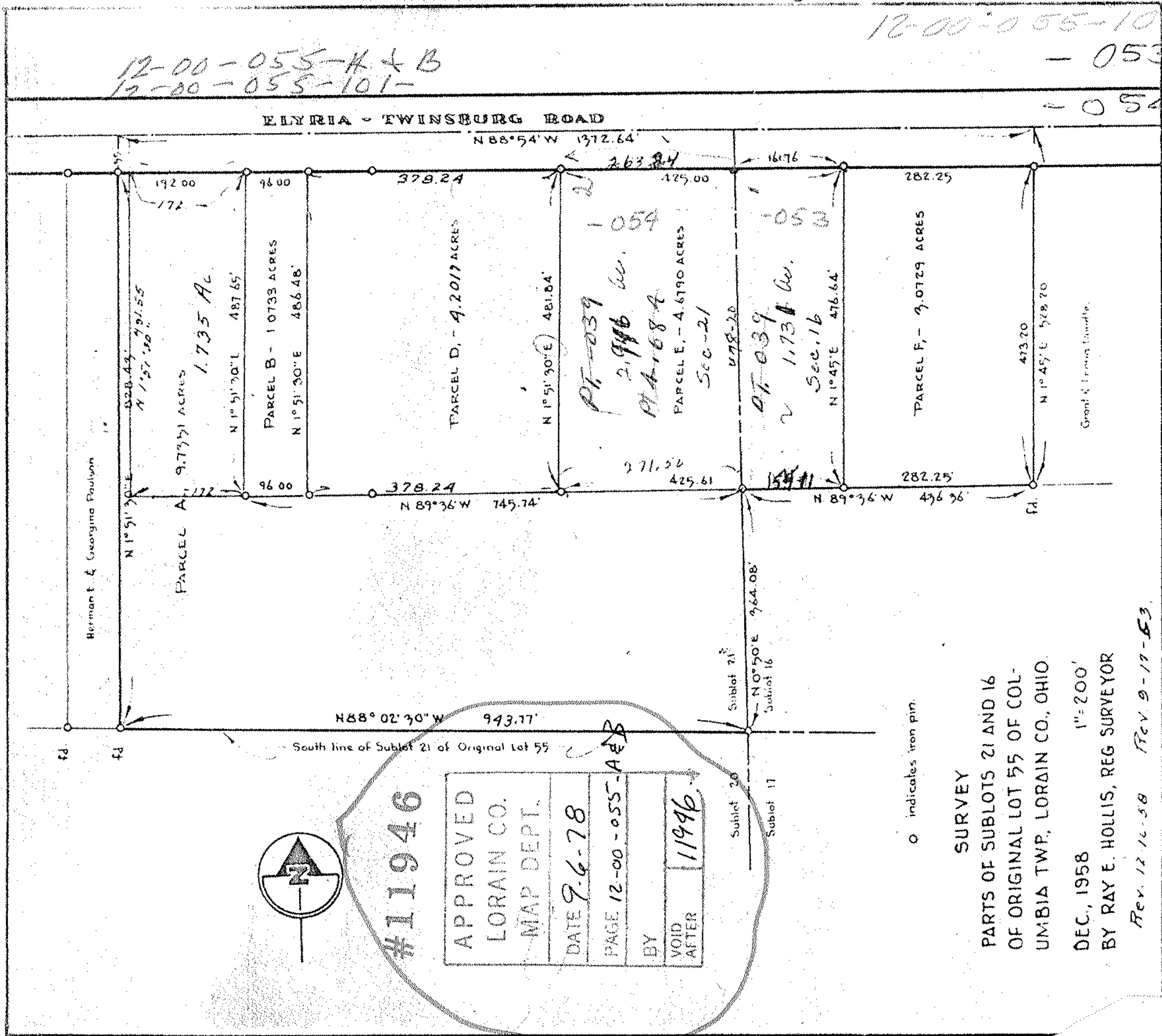
12-00-055-A & B
12-00-055-101

RAY E. HOLLIS

CIVIL ENGINEER & SURVEYOR

1941 BROADWAY

LORAIN, OHIO



o indicates iron pin.

SURVEY

PARTS OF SUBLOTS 21 AND 16
OF ORIGINAL LOT 55 OF COL-
UMBIA TWP., LORAIN CO., OHIO.

DEC., 1958 1"=200'
BY RAY E. HOLLIS, REG SURVEYOR

Rev. 12-12-58 Rev. 9-17-53