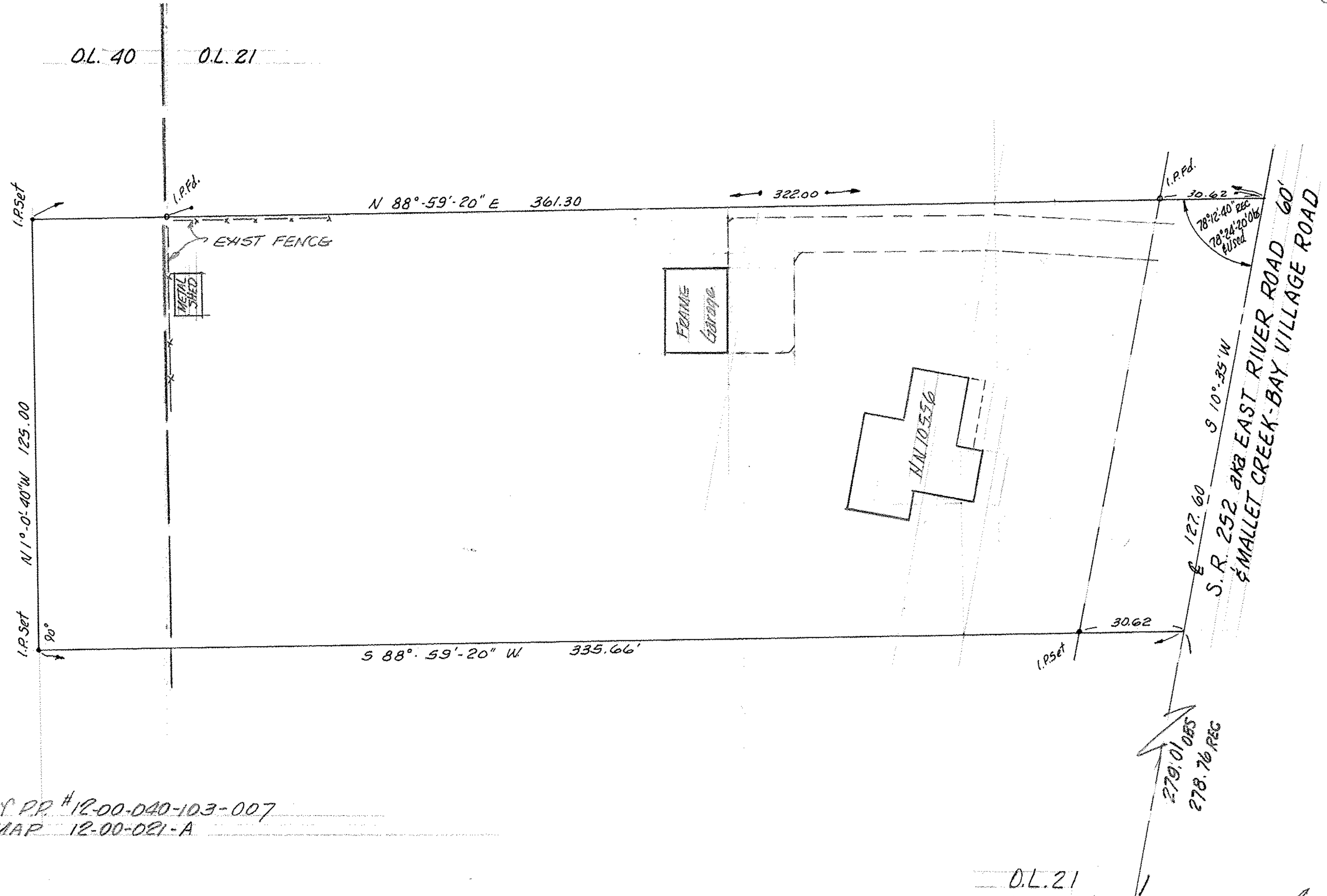




1"=30'



PART of P.P. # 12-00-040-103-007
 TAX MAP 12-00-021-A

MAP of SURVEY of PROPOSED PARCEL SPLIT
 FOR SUNNYSIDE INTERNATIONAL
 AS REQUESTED BY CHICAGO TITLE INS. CORP.
 PART of ORIGINAL COLUMBIA TWP. LOTS 21 & 40
 LORAIN COUNTY, OHIO

— O.L. 21
 — O.L. 22

McGLINCHY & ASSOCIATES INC.
 REGISTERED SURVEYORS & ENGINEERS
 110 1/2 MIDDLE AVE ELYRIA, OHIO 44035
 FEB. 1981 #816658
 C.T.I.C. E 181,732

12-00-021-008
 12-00-040-103-010