

Plat of Survey  
State of Ohio  
County of Lorain  
City of Elyria  
part of original Lot 15  
in Elyria Township  
Springbrook Subdivision  
Sublot No. 39  
PP # 06-24-015-000-085

### Springbrook Subdivision Lorain County PV 85 PG 2

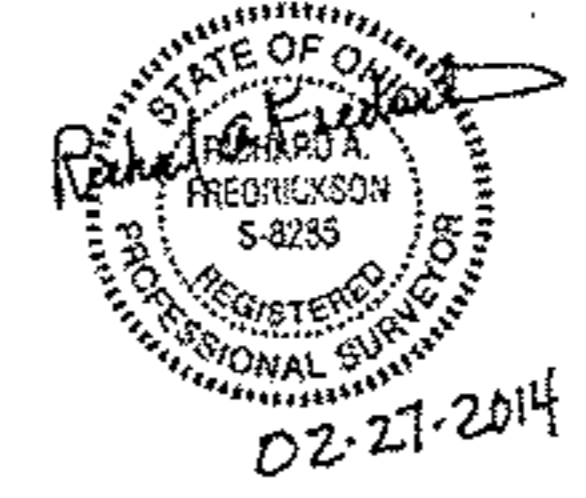
03239

APPROVED  
LOCAL GOV.  
NOV 11

DATE 3-27-14

PAGE 6-93

BY J Hatfield  
#14-03239



Parcel A  
Split from SL 39  
0.0962 acres  
Remainder  
from SL 39  
0.4016 acres  
Easement  
across SL 39  
0.0481 acres

Basis of Bearing - N 2° 35' 40" W for  
Centerline of Springbrook Circle - 60 feet  
as appears in Recorded PV 85 PG 2

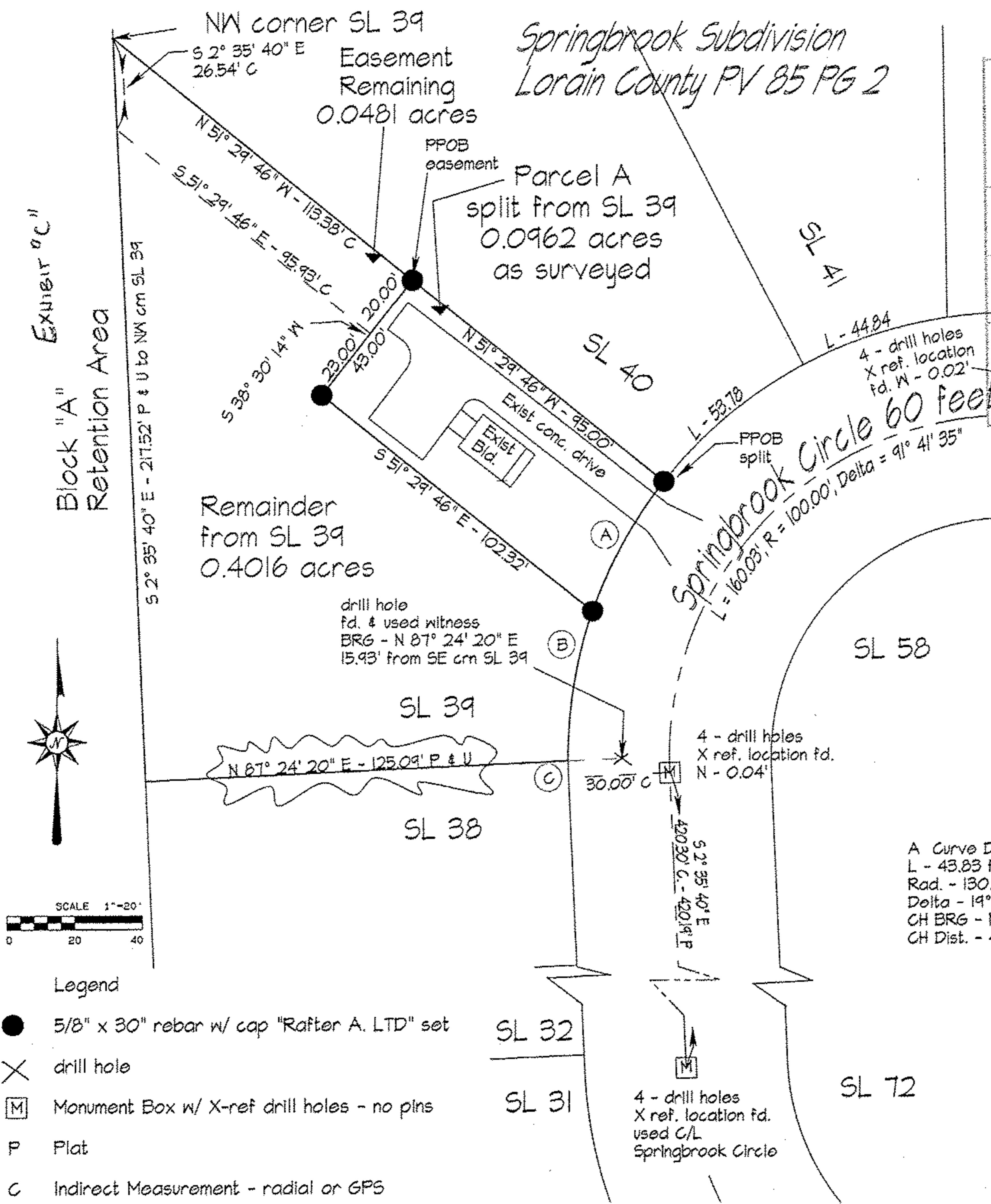
Survey performed by Rafter A. LTD on  
Oct. 8 & Nov. 5, 2012 under direct field  
supervision of Richard A. Fredrickson, P.S.

A Curve Data	B Curve Data	C Curve Data
L - 43.83 feet	L - 44.51 feet	L - 4.92 feet
Rad. - 130.00'	Rad. - 130.00'	Rad. - 130.00'
Delta - 19° 18' 56"	Delta - 19° 36' 55"	Delta - 2° 10' 03"
CH BRG - N 28° 50' 46" E	CH BRG - N 9° 22' 51" E	CH BRG - N 1° 30' 38" W
CH Dist. - 43.62 feet	CH Dist. - 44.29 feet	CH Dist. - 4.92 feet

Survey Made at request of PBT Springbrook, LLC

Rafter A. LTD  
10980 LaGrange Road  
Elyria, OH 44035  
440-309-5275

06-24-015-000-126  
127



- Legend
- 5/8" x 30" rebar w/ cap "Rafter A. LTD" set
  - ✕ drill hole
  - Ⓜ Monument Box w/ X-ref drill holes - no pins
  - P Plat
  - C Indirect Measurement - radial or GPS

revised drawing 02-27-2014