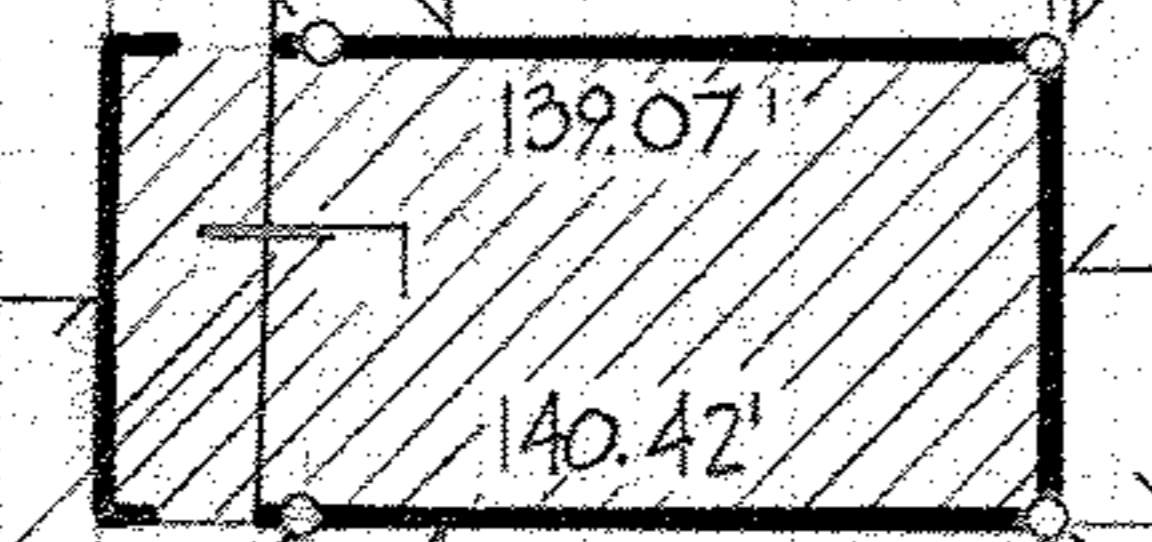


YORKTOWN ROAD

CHARLES E. URBAS
LYNNE A. URBAS
VOL. 1192 PG. 402

LOT SPLIT PARCEL
0.371 ACRES

OAK POINT ROAD



N 89° 40' 20" E 179.07' REG. OBS.
I.P. FD.
N 0° 19' 40" W 89.85' OBS.
I.P. FD.
I.P. SET
N 89° 36' 17" E 180.42'
I.P. FD.

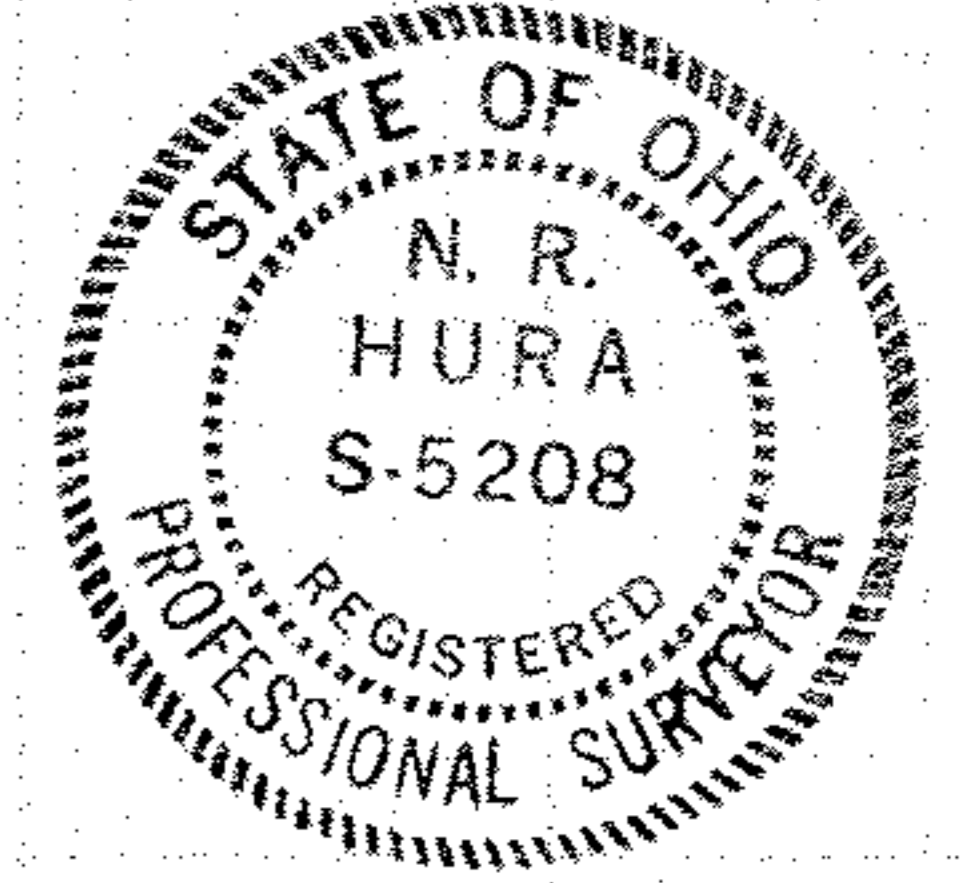
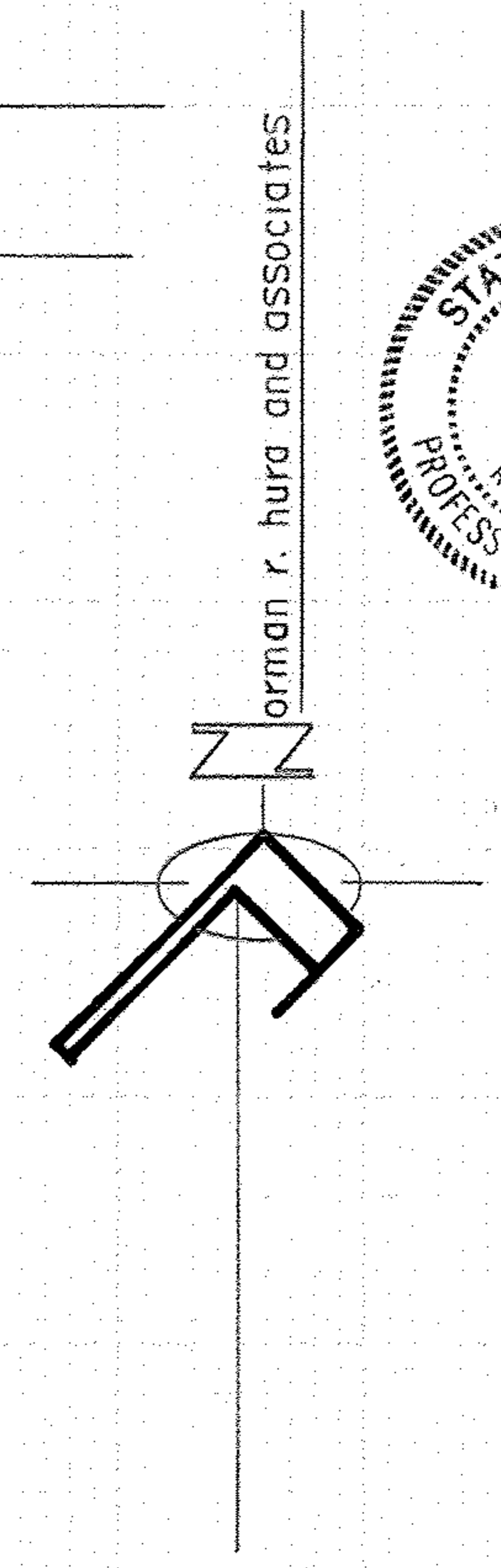
ANNA P. MIHUTA VOL. 1234 PG 736
P.P.N. 2-03-006-104-023
RESIDUAL ACRES=3.639

880' ±
THOMAS J. REOTT, TRUSTEE
VOL. 0245 PG 662

SUBLOT NO. 39, OAKHILL FARMS
SUBDN. NO. 3, VOL. 45 PG 39

180
SUBLOT 30
SUBLOT 34

OAKHILLS FARM SUBDIVISION NO. 2
VOL. 24 PG. 82



NOVEMBER 1990
SCALE 1" = 100'

LOT SPLIT FROM P.P.N. 2-03-006-104-023

RONALD J. SANKER
PETER A. BUTREY