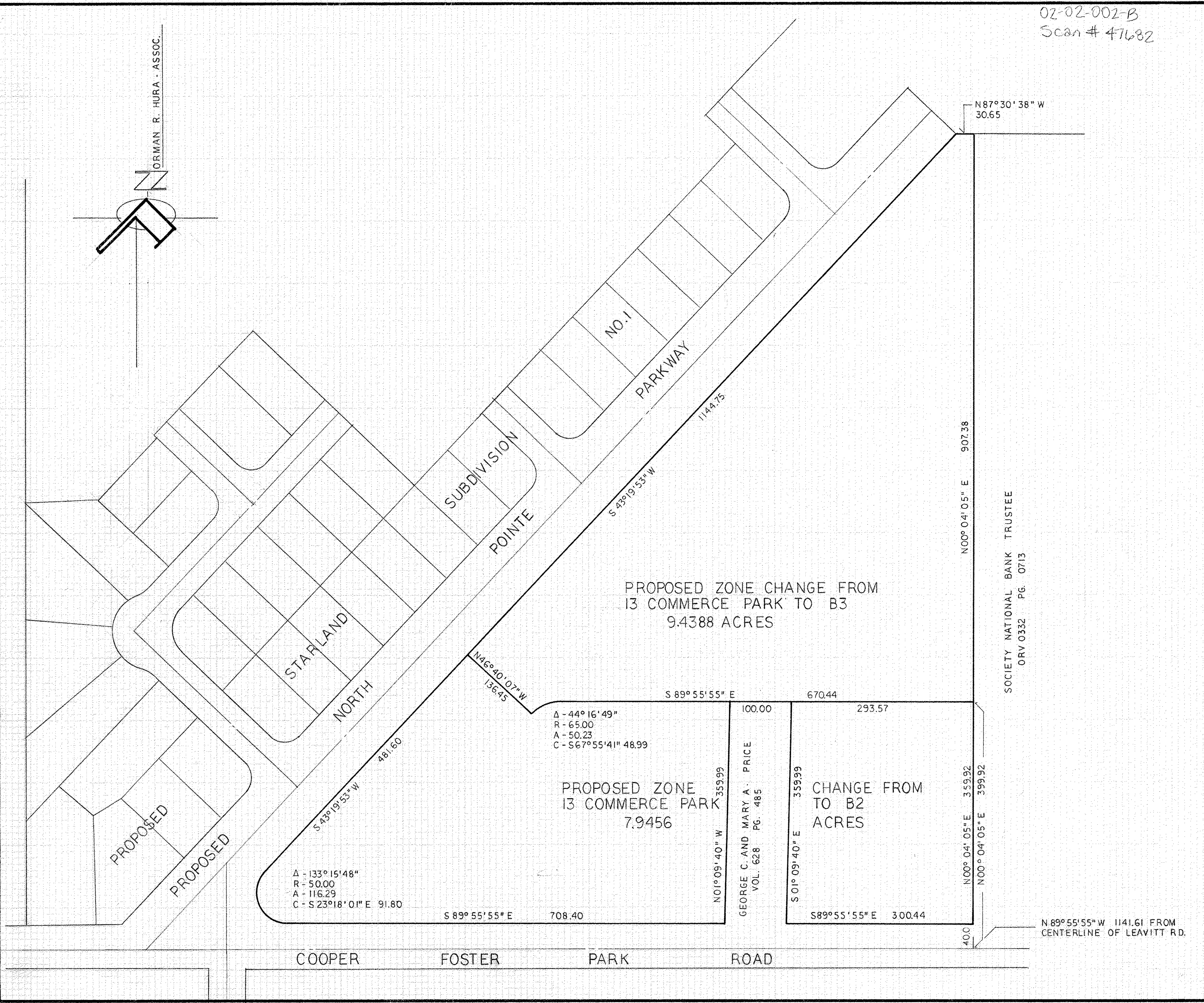
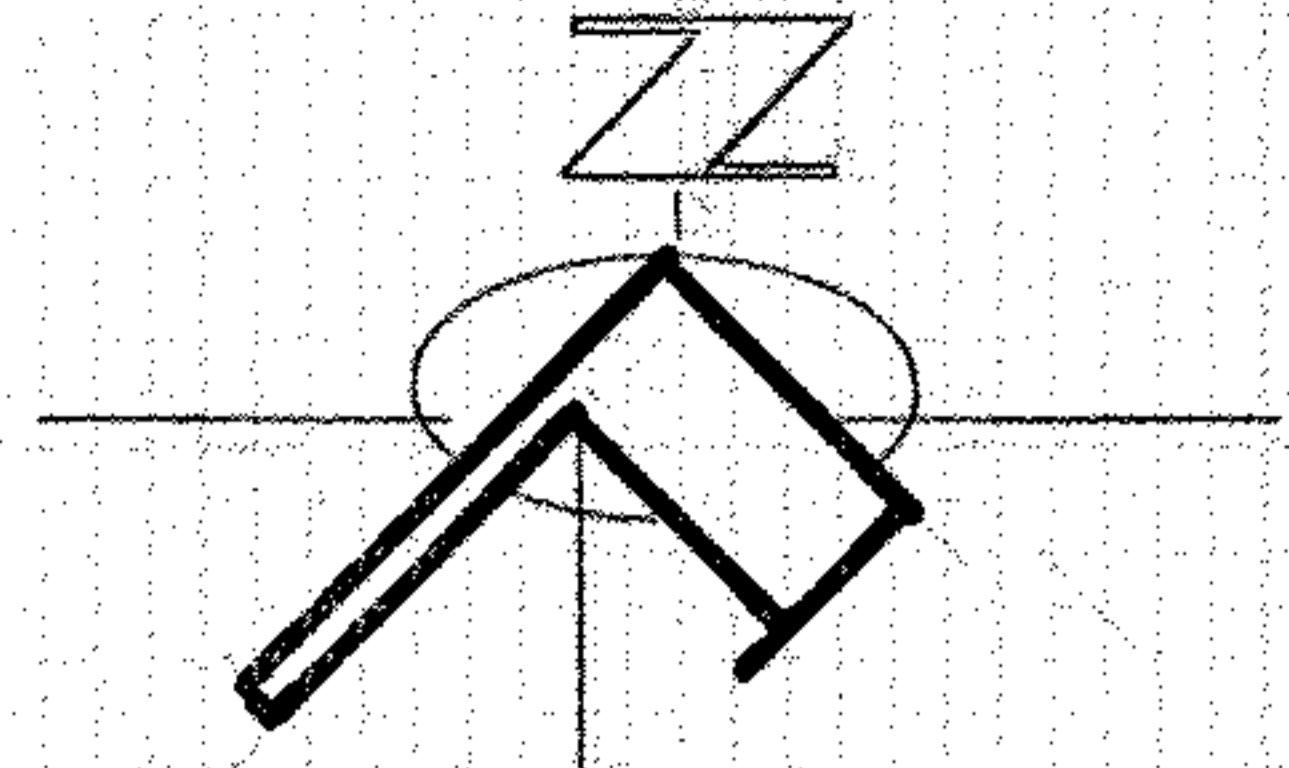


ORMAN R. HURA - ASSOC.



PROPOSED ZONE CHANGE FROM
13 COMMERCE PARK TO B3
9.4388 ACRES

PROPOSED ZONE
13 COMMERCE PARK
7.9456

CHANGE FROM
TO B2
ACRES

Δ - 133° 15' 48"
R - 50.00
A - 116.29
C - S 23° 18' 01" E 91.80

Δ - 44° 16' 49"
R - 65.00
A - 50.23
C - S 67° 55' 41" E 48.99

GEORGE C. AND MARY A. PRICE
VOL. 628 PG. 485

SOCIETY NATIONAL BANK TRUSTEE
ORV 0332 PG. 0713

N 89° 55' 55" W 1141.61 FROM
CENTERLINE OF LEAVITT RD.

MARCH 1995
SCALE 1" = 100'

PLAT OF PROPOSED REZONING
ORIGINAL LOT NO. 2 TRACT NO. 2
BLACK RIVER TOWNSHIP
CITY OF LORAIN - OHIO

STARLAND INVESTMENTS INC.