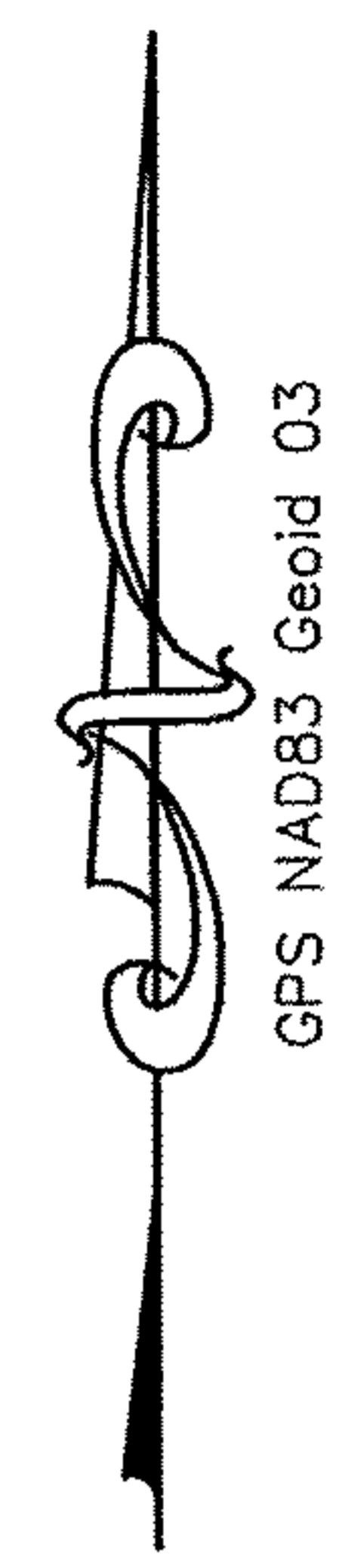


Timothy Riley
 Engineer - Surveyor
 Norwalk, Ohio



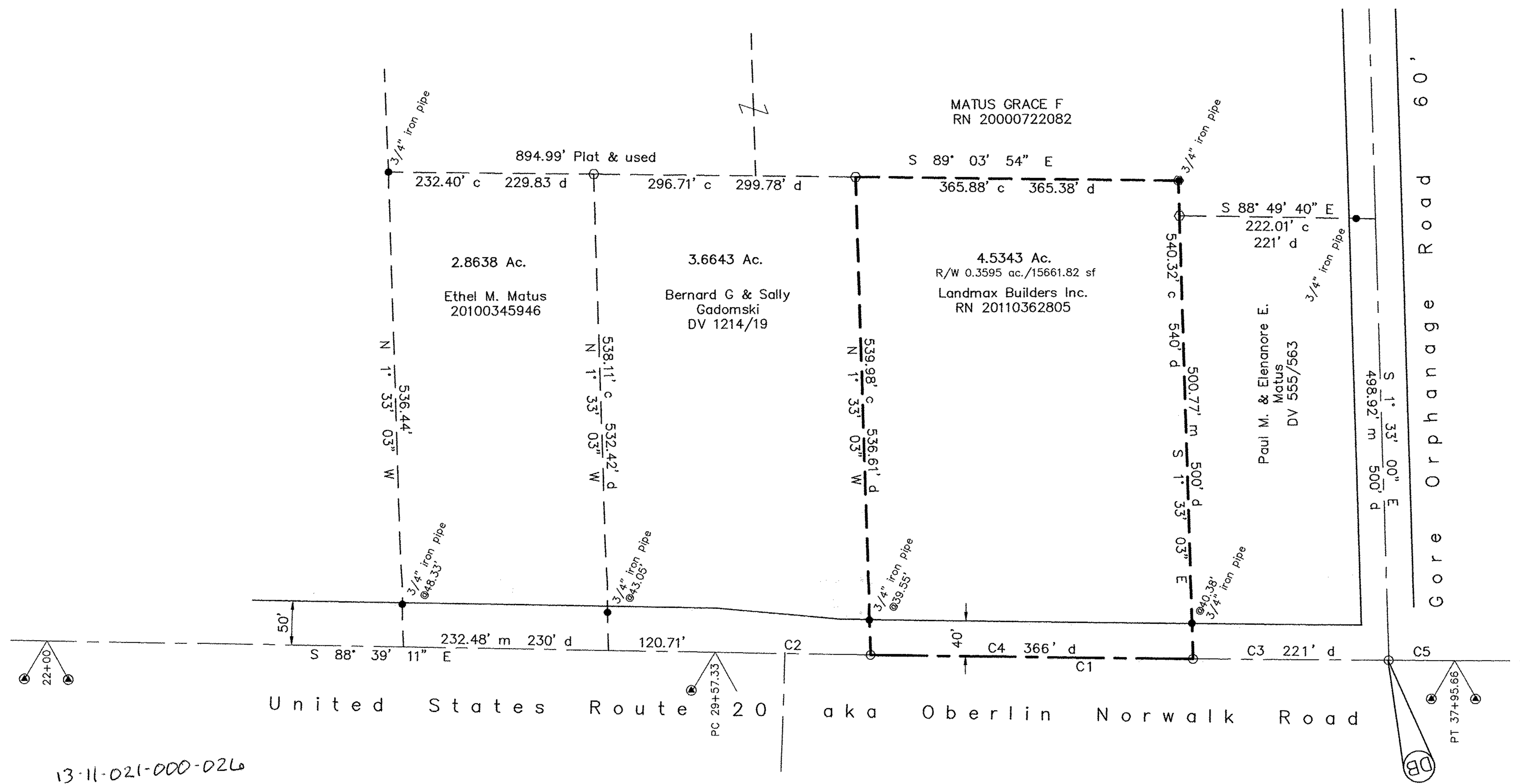
RR spike found
 R/W Monument
 Monument Box
 Nail Set
 9/16" hex bar set
 Monument found
 0 1 2 3
 0 100 200 300
 Inch Scale
 E/C 1:10000

Plat of Survey
 for
 Landmax Builders

Twp. 4N, Rn 19W
 Camden Township
 Lot 21, Tract 11
 Lorain County, Ohio

Revisions
 Ckd By: TOR
 Dwn By: CAD
 Date:
 8-28-2013
 Scale:
 1" = 100'
 Job No.
 32018

GPS NAD83 Geoid 03



13-11-021-000-026

APPROVED
 LOCAL GOV.
 PLAT
 DATE 9-12-13
 MAP 13-A
 BY R. MAINES
 #13-02797-A

NUM	DELTA	ARC	RADIUS	BEARING	DISTANCE
C1	0° 50' 18"	838.33'	57295.80'	S 89° 04' 20" E	838.32'
C2	0° 10' 34"	176.09'	57295.80'	S 88° 44' 28" E	176.09'
C3	0° 13' 19"	221.92'	57295.80'	S 89° 18' 22" E	221.92'
C4	0° 21' 57"	365.89'	57295.80'	S 89° 00' 44" E	365.89'
C5	0° 04' 28"	74.43'	57295.80'	S 89° 27' 15" E	74.43'



Timothy Riley
 Timothy Riley
 Reg. Surveyor No. 6925

m measured
 c calculated
 d deed
 p plat
 u used