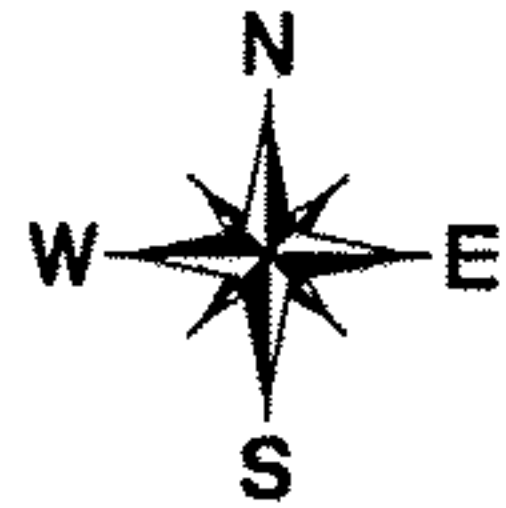


Plat of Survey

**Brill-View Farms, Inc.**

Rochester Twp. Tr. 5 O.L. 13  
Lorain Co. Ohio



Remainder  
20-05-013-000-010  
92.24 Acres  
By Auditor

IPF= Iron Pin Found  
IPS= Iron Pin Set: 5/8" re-bar  
with cap stamped Carlson  
Mon= Monument Box

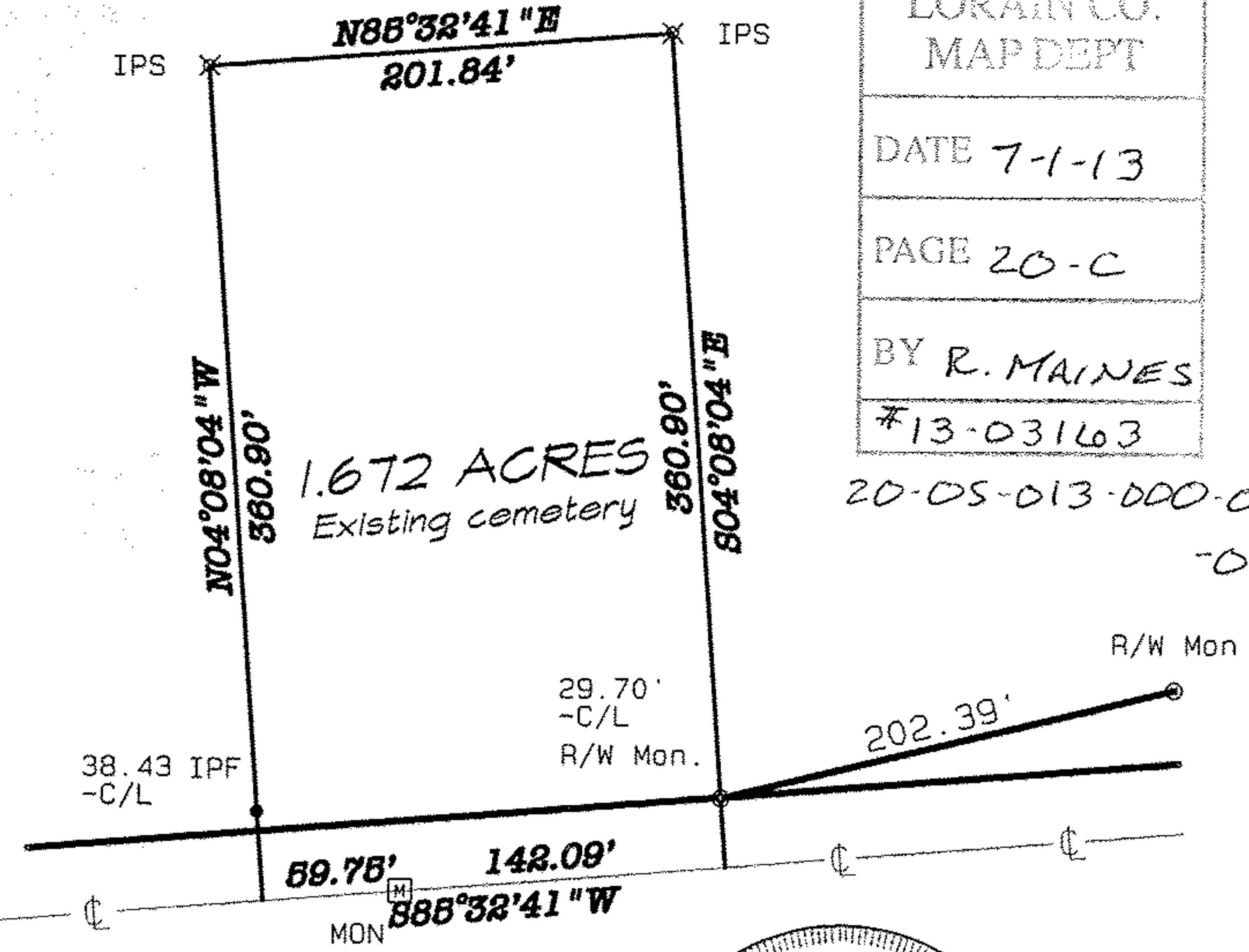
References: ODOT LOR-162-(1.98)

State Route  
511

N85°32'41"E 683.43'

State Route 162

GRAPHIC SCALE 1"=100'



APPROVED  
LORAIN CO.  
MAP DEPT

DATE 7-1-13

PAGE 20-C

BY R. MAINES

#13-03163

20-05-013-000-010  
-011

