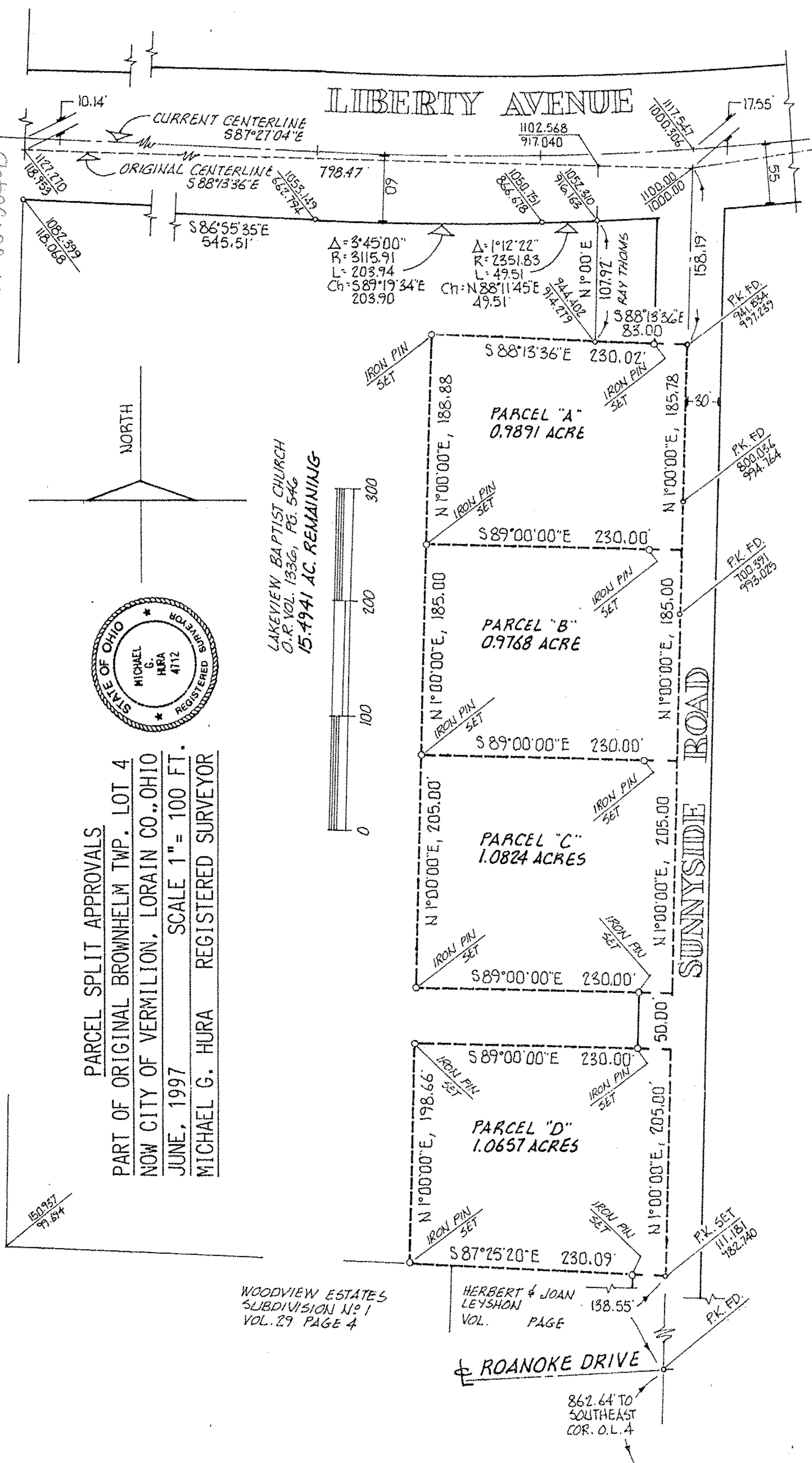
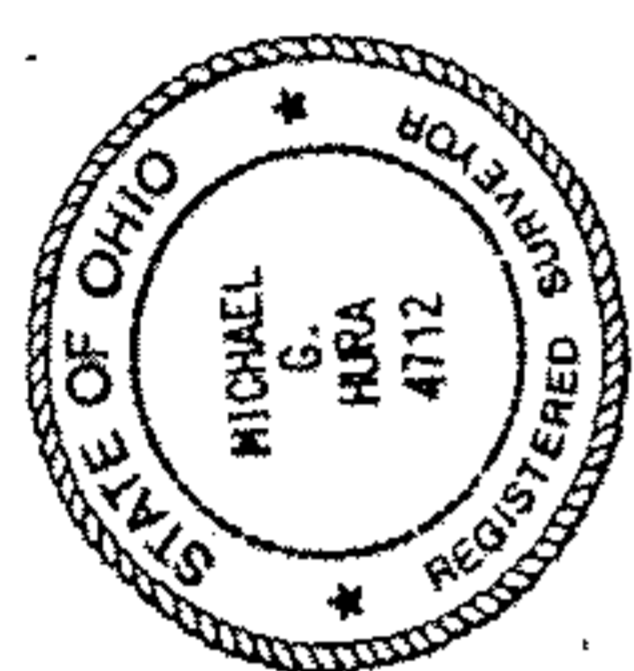


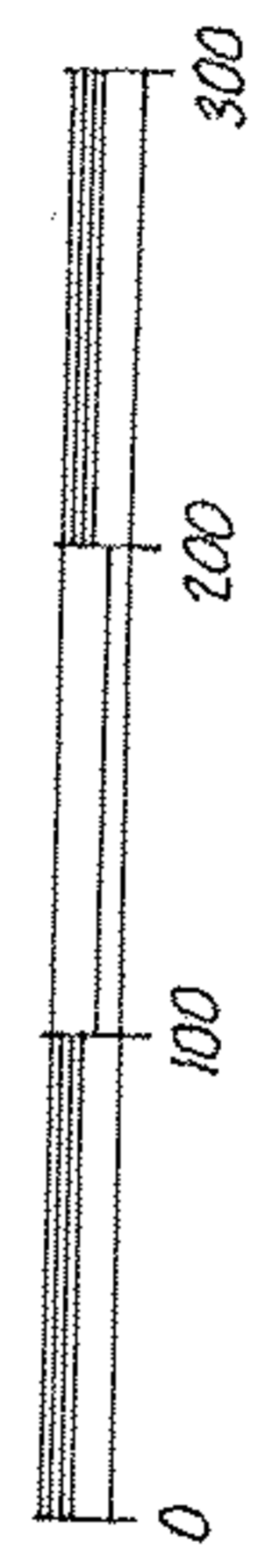
Scan # 47427
 01-00-004-120-055
 01-00-004-D



PARCEL SPLIT APPROVALS
 PART OF ORIGINAL BROWNHELM TWP. LOT 4
 NOW CITY OF VERMILION, LORAIN CO., OHIO
 JUNE, 1997 SCALE 1" = 100 FT.
 MICHAEL G. HURA REGISTERED SURVEYOR



LAKEVIEW BAPTIST CHURCH
 O.R. VOL. 1336, PG. 546
 15.4941 AC. REMAINING



150.837
 99.154

WOODVIEW ESTATES
 SUBDIVISION No 1
 VOL. 29 PAGE 4

HERBERT & JOAN
 LEYSHON
 VOL. PAGE

ROANOKE DRIVE

862.64' TO
 SOUTHEAST
 COR. O.L. 4

P.K. SET
 111.181
 782.740

P.K. FD.
 941.834
 997.239

P.K. FD.
 800.034
 99A-764

P.K. FD.
 100.391
 993-025

LIBERTY AVENUE

SUNNYSIDE ROAD

NORTH

CURRENT CENTERLINE
 S87°27'04"E

ORIGINAL CENTERLINE
 S88°13'36"E

$\Delta = 3^{\circ}45'00''$
 R = 3115.91
 L = 203.94
 Ch = S89°19'34"E
 203.90

$\Delta = 1^{\circ}12'22''$
 R = 2351.83
 L = 49.51
 Ch = N88°11'45"E
 49.51

RAY THOMAS

IRON PIN SET

IRON PIN SET

IRON PIN SET

IRON PIN SET

IRON PIN SET

IRON PIN SET

IRON PIN SET

IRON PIN SET

IRON PIN SET

IRON PIN SET

P.K. FD.
 941.834
 997.239

P.K. FD.
 800.034
 99A-764

P.K. FD.
 100.391
 993-025

P.K. SET
 111.181
 782.740

P.K. FD.
 941.834
 997.239

1102.568
 917.040

117.547
 1000.306

112.210
 118.933

1087.392
 118.068

S86°55'35"E
 545.51'

798.47'

69'

158.19'

55'

30'

185.00'

205.00'

50.00'

205.00'

138.55'

PARCEL "A"
 0.9891 ACRE

PARCEL "B"
 0.9768 ACRE

PARCEL "C"
 1.0824 ACRES

PARCEL "D"
 1.0657 ACRES

S88°13'36"E 230.02'

S89°00'00"E 230.00'

S89°00'00"E 230.00'

S89°00'00"E 230.00'

S89°00'00"E 230.00'

S87°25'20"E 230.09'

N1°00'00"E, 185.00'

N1°00'00"E, 205.00'

N1°00'00"E, 198.66'

N1°00'00"E, 205.00'

N1°00'00"E, 138.55'

N1°00'E
 107.92'

N1°00'00"E, 188.88'

N1°00'00"E, 185.00'

N1°00'00"E, 205.00'

N1°00'00"E, 205.00'

N1°00'00"E, 138.55'

1100.00
 1000.00

158.19'

30'

185.00'

205.00'

50.00'

205.00'

138.55'

117.547
 1000.306

1102.568
 917.040

112.210
 118.933

1087.392
 118.068

S86°55'35"E
 545.51'

798.47'

69'

158.19'

55'

30'

185.00'

205.00'

50.00'

205.00'

138.55'

117.547
 1000.306

1102.568
 917.040

112.210
 118.933

1087.392
 118.068

S86°55'35"E
 545.51'

798.47'

69'

158.19'

55'

30'

185.00'

205.00'

50.00'

205.00'

138.55'

117.547
 1000.306

1102.568
 917.040

112.210
 118.933

1087.392
 118.068

S86°55'35"E
 545.51'

798.47'

69'

158.19'

55'

30'

185.00'

205.00'

50.00'

205.00'

138.55'

117.547
 1000.306

1102.568
 917.040

112.210
 118.933

1087.392
 118.068

S86°55'35"E
 545.51'

798.47'

69'

158.19'

55'

30'

185.00'

205.00'

50.00'

205.00'

138.55'

117.547
 1000.306

1102.568
 917.040

112.210
 118.933

1087.392
 118.068

S86°55'35"E
 545.51'

798.47'

69'

158.19'

55'

30'

185.00'

205.00'

50.00'

205.00'

138.55'

117.547
 1000.306

1102.568
 917.040

112.210
 118.933

1087.392
 118.068

S86°55'35"E
 545.51'

798.47'

69'

158.19'

55'

30'

185.00'

205.00'

50.00'

205.00'

138.55'

117.547
 1000.306

1102.568
 917.040

112.210
 118.933

1087.392
 118.068

S86°55'35"E
 545.51'

798.47'

69'

158.19'

55'

30'

185.00'

205.00'

50.00'

205.00'

138.55'

117.547
 1000.306

1102.568
 917.040

112.210
 118.933

1087.392
 118.068

S86°55'35"E
 545.51'

798.47'

69'

158.19'

55'

30'

185.00'

205.00'

50.00'

205.00'

138.55'

117.547
 1000.306

1102.568
 917.040

112.210
 118.933

1087.392
 118.068

S86°55'35"E
 545.51'

798.47'

69'

158.19'

55'

30'

185.00'

205.00'

50.00'

205.00'