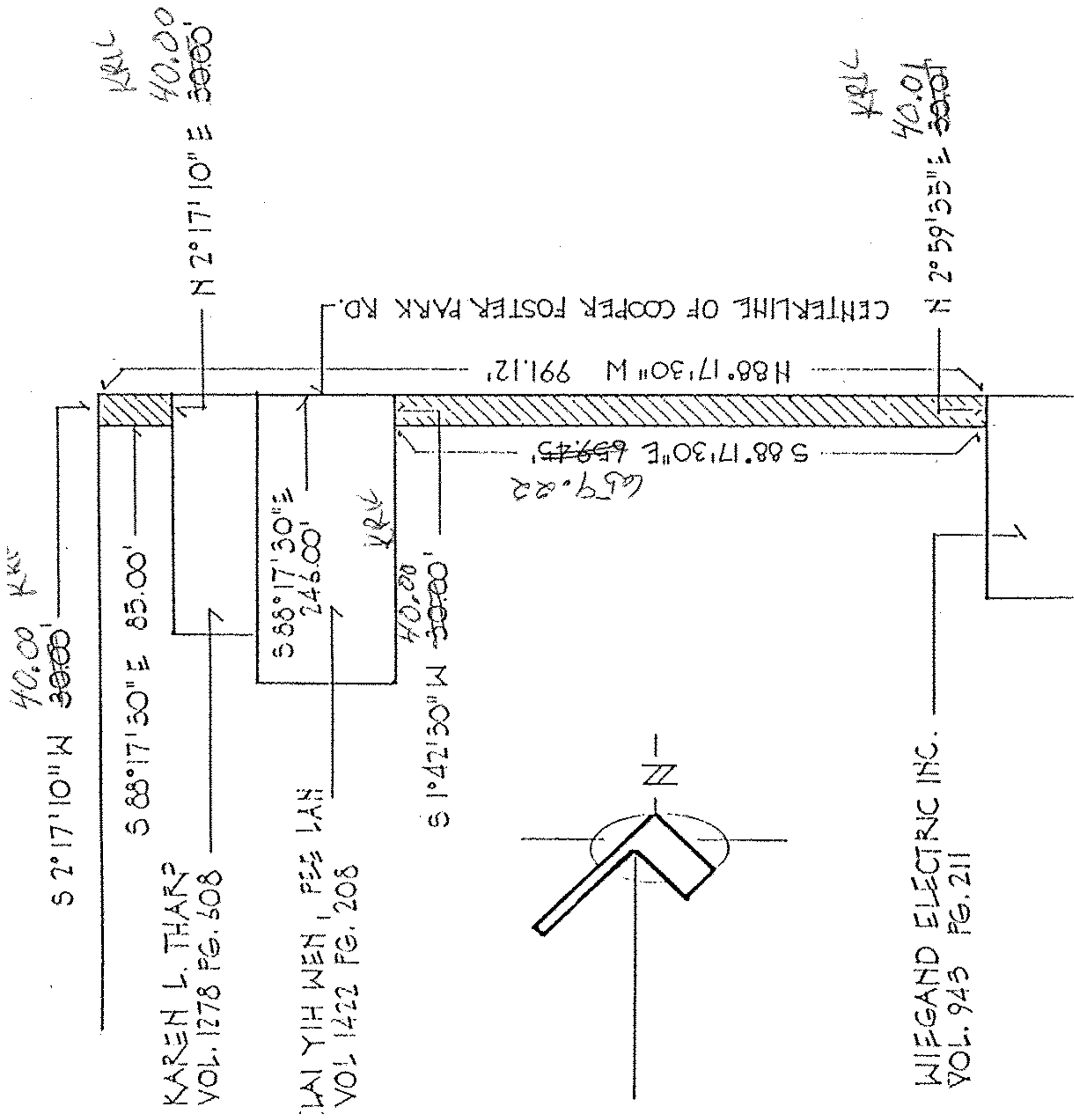


05-00-060-101

#18404

05-00-060-A

Scan #47396



PLAT OF LOT SPLIT TO THE CITY OF AMHERST
 FOR PURPOSES OF STREET DEDICATION
 PART OF P.P.N. 05-00-060-101-029
 APRIL 20, 1989 SCALE 1"=200'-0"

K R Dempster

#18404

APPROVED
 LORAIN CO.
 MAP DEPT.

DATE 5-2-89

PAGE 5-00-060-A

BY CAROL FROST

VOID AFTER #18404