

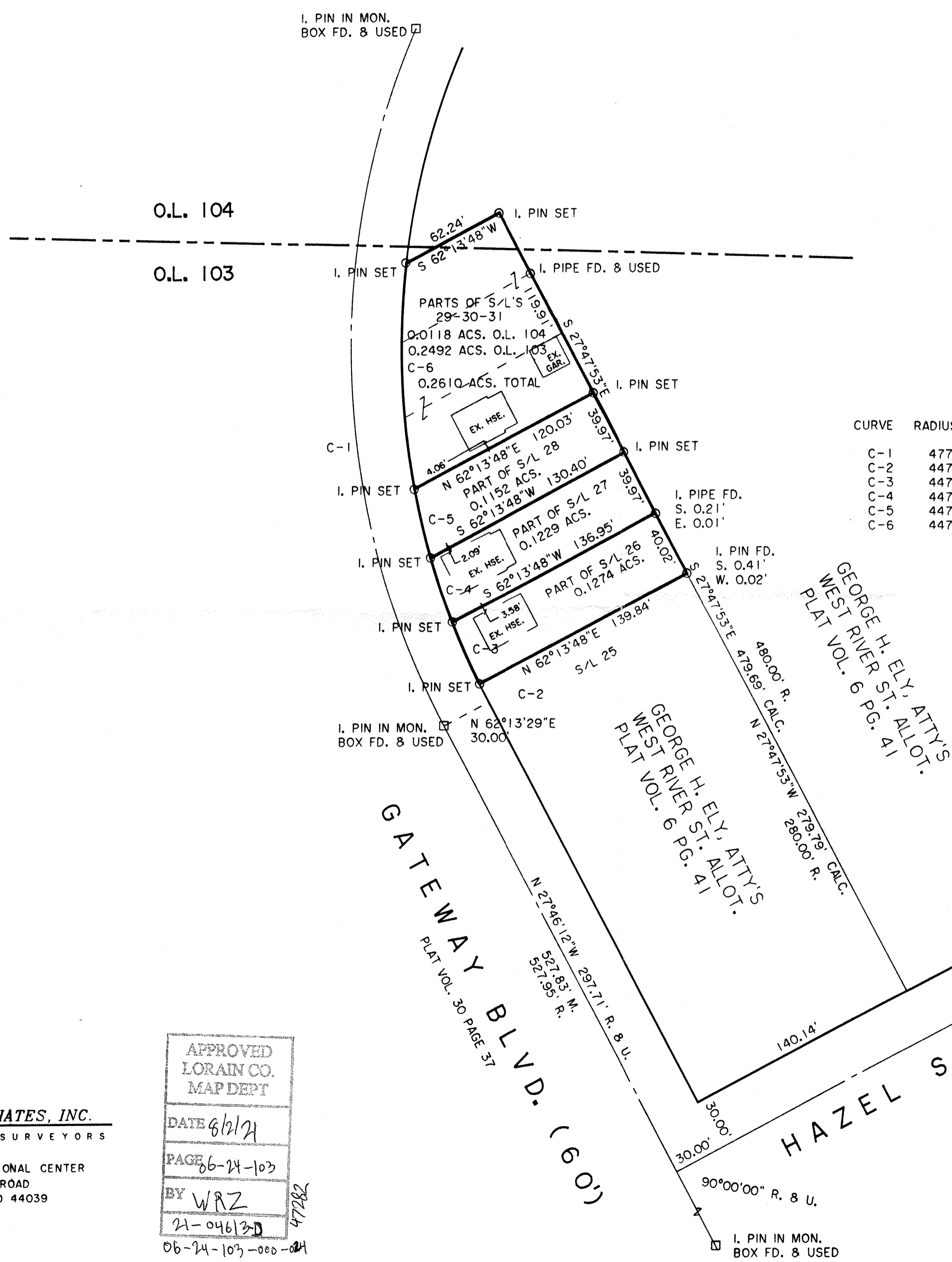
DIMENSIONS SHOWN ON THIS PLAT ARE EXPRESSED IN FEET AND DECIMAL PARTS THEREOF, ALL BEARINGS ARE TO AN ASSUMED MERIDIAN AND ARE USED TO INDICATE ANGLES ONLY. PERMANENT MONUMENTS WERE FOUND OR SET AT ALL POINTS INDICATED HEREON, ALL OF WHICH I CERTIFY TO BE CORRECT.



T.A.S.
 THOMAS A. SIMON
 REG. PROFESSIONAL SURVEYOR
 NO. S-7775

CURVE	RADIUS	TANGENT	LENGTH	DELTA	DEGREE	CHORD	CH. BEARING
C-1	477.47'	228.16'	425.69'	51°04'57"	12°00'00"	411.73'	N 02°14'03"W
C-2	447.47'	6.04'	12.08'	1°32'48"	12°48'16"	12.08'	N 27°00'07"W
C-3	447.47'	20.08'	40.14'	5°08'21"	12°48'16"	40.12'	N 23°39'33"W
C-4	447.47'	20.27'	40.51'	5°11'15"	12°48'16"	40.50'	N 18°29'45"W
C-5	447.47'	20.67'	41.30'	5°17'18"	12°48'16"	41.29'	N 13°15'28"W
C-6	447.47'	67.29'	133.58'	17°06'14"	12°48'16"	133.08'	N 02°03'42"W

BASIS OF BEARINGS IS THE CENTERLINE OF GATEWAY BLVD. (NORTH 27°46'12" WEST). IRON PINS SET ARE 5/8" DIAMETER, 30" LONG WITH PLASTIC CAPS, "T. SIMON S-7775".



PLAT OF SURVEY AND SPLIT FOR

JUDE H. MERICLE

BEING KNOWN AS PARTS OF SUBLOTS 26-31 OF GEORGE H. ELY, ATTY'S WEST RIVER ST. ALLOT. AS RECORDED IN PLAT VOLUME 6 PAGE 41 OF LORAIN COUNTY PLAT RECORDS AND PART OF ORIGINAL LOT NOS. 103 AND 104, TRACT 24 ELYRIA TOWNSHIP, WEST OF THE BLACK RIVER

CITY OF ELYRIA COUNTY OF LORAIN STATE OF OHIO

JULY 2001 SCALE: 1" = 50'

THOMAS SIMON & ASSOCIATES, INC.
 PROFESSIONAL LAND SURVEYORS
 COBBLESTONE CORNER PROFESSIONAL CENTER
 39049 CENTER RIDGE ROAD
 NORTH RIDGEVILLE, OHIO 44039
 (440) 327-2925
 FAX 327-2964

APPROVED
 LORAIN CO.
 MAP DEPT
 DATE 6/2/21
 PAGE 66-24-103
 BY WRZ
 21-04613D
 47282
 06-24-103-000-024