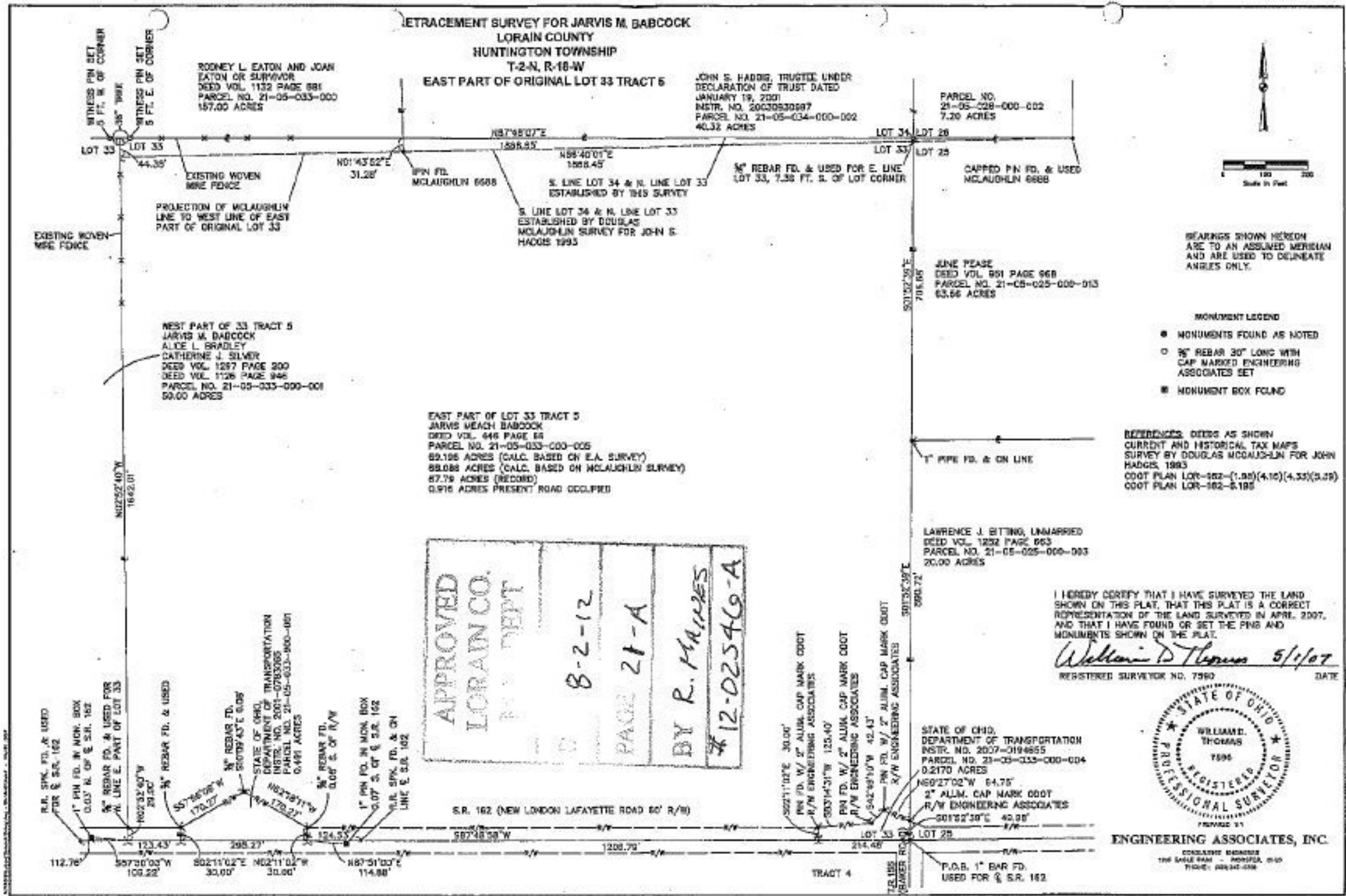


RETRACEMENT SURVEY FOR JARVIS M. BABCOCK
 LORAIN COUNTY
 HUNTINGTON TOWNSHIP
 T-2-N, R-18-W
 EAST PART OF ORIGINAL LOT 33 TRACT 5



BEARINGS SHOWN HEREON
 ARE TO AN ASSUMED MERIDIAN
 AND ARE USED TO DELINEATE
 ANGLES ONLY.

- MONUMENT LEGEND
- MONUMENTS FOUND AS NOTED
 - 3/4\" REBAR 30\" LONG WITH CAP MARKED ENGINEERING ASSOCIATES SET
 - MONUMENT BOX FOUND

REFERENCES: DEEDS AS SHOWN
 CURRENT AND HISTORICAL TAX MAPS
 SURVEY BY DOUGLAS MCLAUGHLIN FOR JOHN
 HADGEE, 1993
 COOT PLAN LOR-182-(1.88)(4.10)(4.33)(3.29)
 COOT PLAN LOR-182-8.185

APPROVED
 LORAIN CO.
 REPT
 8-2-12
 PAGE 21-A
 BY R. THOMAS
 #12-02546-A

I HEREBY CERTIFY THAT I HAVE SURVEYED THE LAND
 SHOWN ON THIS PLAT, THAT THIS PLAT IS A CORRECT
 REPRESENTATION OF THE LAND SURVEYED IN APRIL, 2007,
 AND THAT I HAVE FOUND OR SET THE PINS AND
 MONUMENTS SHOWN ON THE PLAT.
William D. Thomas 5/1/07
 REGISTERED SURVEYOR NO. 7596 DATE



ENGINEERING ASSOCIATES, INC.
 CONSULTING ENGINEERS
 100 S. MAIN ST. - WINDSOR, OH 44097
 PHONE: 440.244.0000

SCAN # 47239
 21-05-033-000-005