

NO SCALE

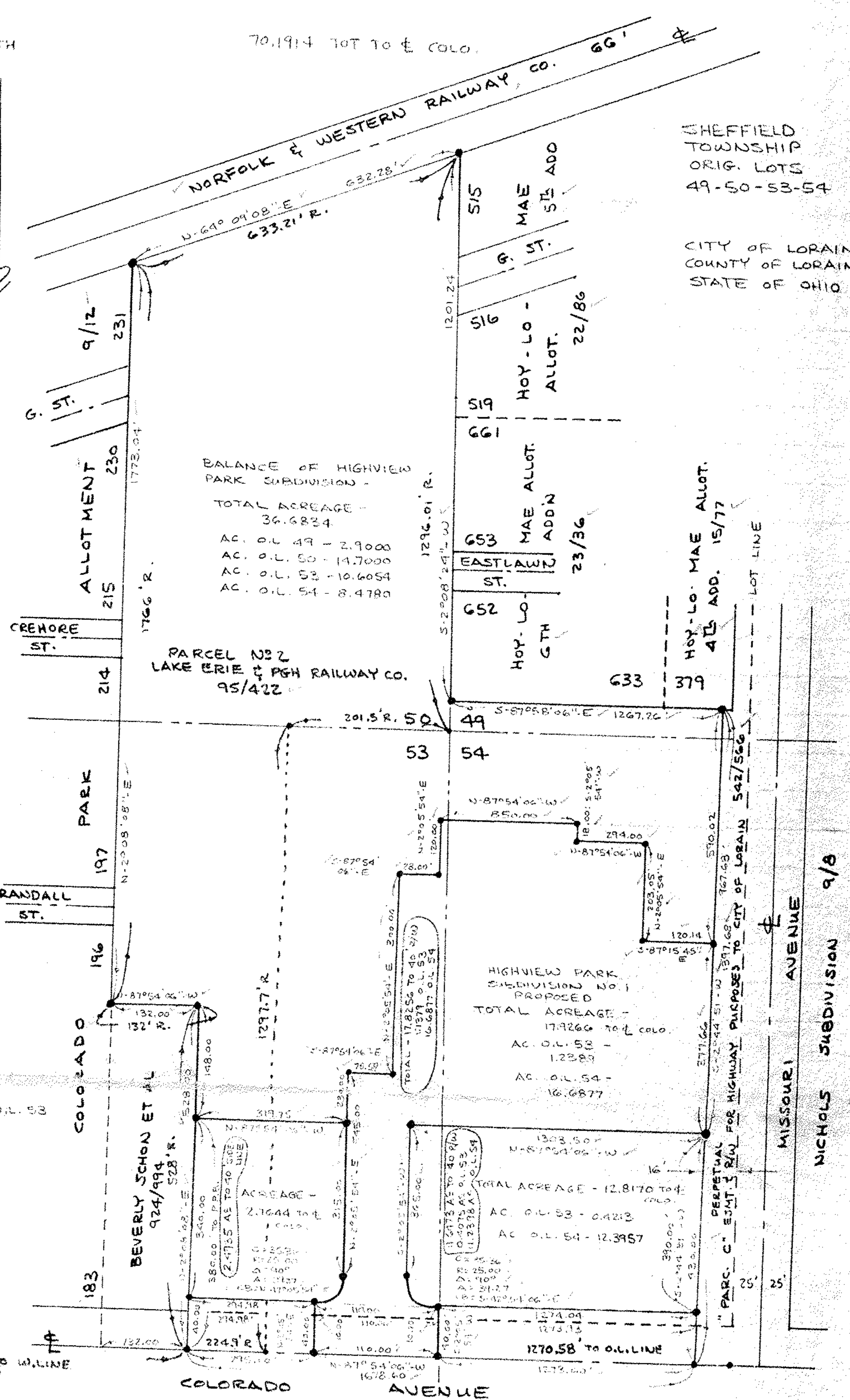
NORTH

70.1914 TOT TO E COLO.

NORFOLK & WESTERN RAILWAY CO. 66'

SHEFFIELD TOWNSHIP ORIG. LOTS 49-50-53-54

CITY OF LORAIN COUNTY OF LORAIN STATE OF OHIO



BALANCE OF HIGHVIEW PARK SUBDIVISION -
 TOTAL ACREAGE - 36.6834
 AC. O.L. 49 - 2.9000
 AC. O.L. 50 - 14.7000
 AC. O.L. 53 - 10.6054
 AC. O.L. 54 - 8.4780

PARCEL NO 2
 LAKE ERIE & PGM RAILWAY CO.
 95/422

HIGHVIEW PARK SUBDIVISION NO. 1 PROPOSED
 TOTAL ACREAGE - 17.9266 TO E COLO.
 AC. O.L. 53 - 1.2389
 AC. O.L. 54 - 16.6877

TOTAL ACREAGE - 12.8170 TO E COLO.
 AC. O.L. 53 - 0.4213
 AC. O.L. 54 - 12.3957

PERPETUAL EJECT. R/W FOR HIGHWAY PURPOSES TO CITY OF LORAIN 542/566

MISSOURI AVENUE 9/8
 NICHOLS SUBDIVISION

183
 196
 197
 198
 214
 215
 230
 231
 379
 49
 53
 54
 59
 63
 66
 67
 68
 69
 70
 71
 72
 73
 74
 75
 76
 77
 78
 79
 80
 81
 82
 83
 84
 85
 86
 87
 88
 89
 90
 91
 92
 93
 94
 95
 96
 97
 98
 99
 100