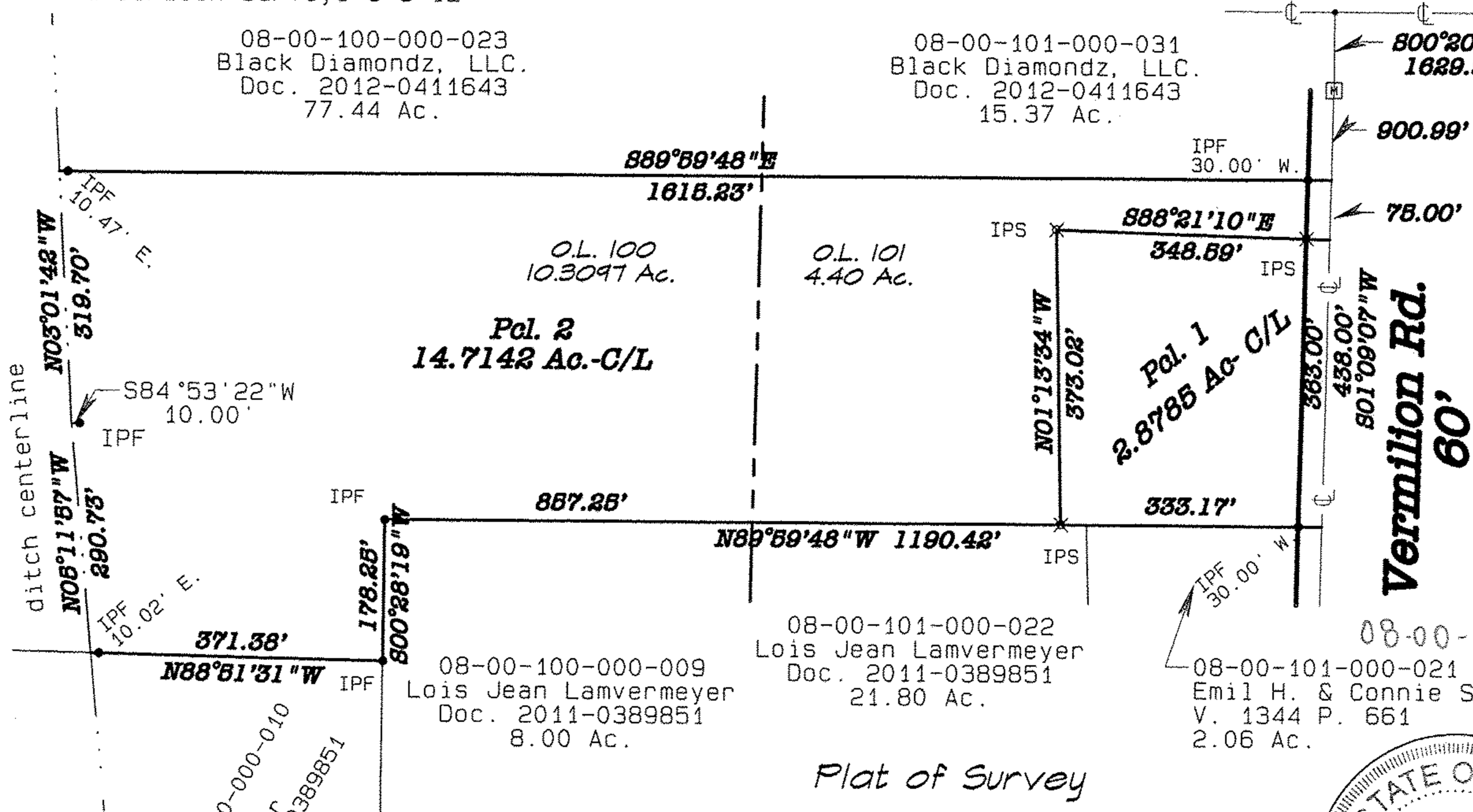
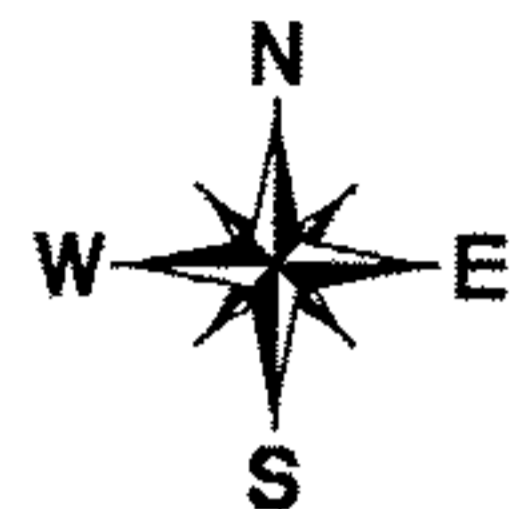


Prepared from survey by Weigler Land Surveying, Ltd. 5-13-2004
& Carlson Surveys 6-5-12

S.R. 113

08-00-100-000-023
Black Diamondz, LLC.
Doc. 2012-0411643
77.44 Ac.

08-00-101-000-031
Black Diamondz, LLC.
Doc. 2012-0411643
15.37 Ac.



03054
APPROVED
LORAIN CO.
MAP DEPT
DATE 8-3-12
PAGE 8-B, 8-C
BY J. Hatfield
#12-03054

08-00-100-000-010
Lois Jean
Lamvermeyer
Doc. 2011-0389851
20.64 Ac.

08-00-100-000-009
Lois Jean Lamvermeyer
Doc. 2011-0389851
8.00 Ac.

08-00-101-000-022
Lois Jean Lamvermeyer
Doc. 2011-0389851
21.80 Ac.

08-00-101-000-032
033
08-00-101-000-021
Emil H. & Connie S. Ruth
V. 1344 P. 661
2.06 Ac.

Plat of Survey
Black Diamondz, LLC.
Henrietta Twp. O.L. 100 & 101
Lorain Co. Ohio
Carlson Surveys Job: 801-17
6-5-12

