

LAUNDON - HUFFMAN - SIMON

CIVIL ENGINEERS - SURVEYORS

200 ROBINSON BUILDING ANNEX

401 W. BROAD ST. ELYRIA, OHIO

THOMAS W. LAUNDON, P.E.

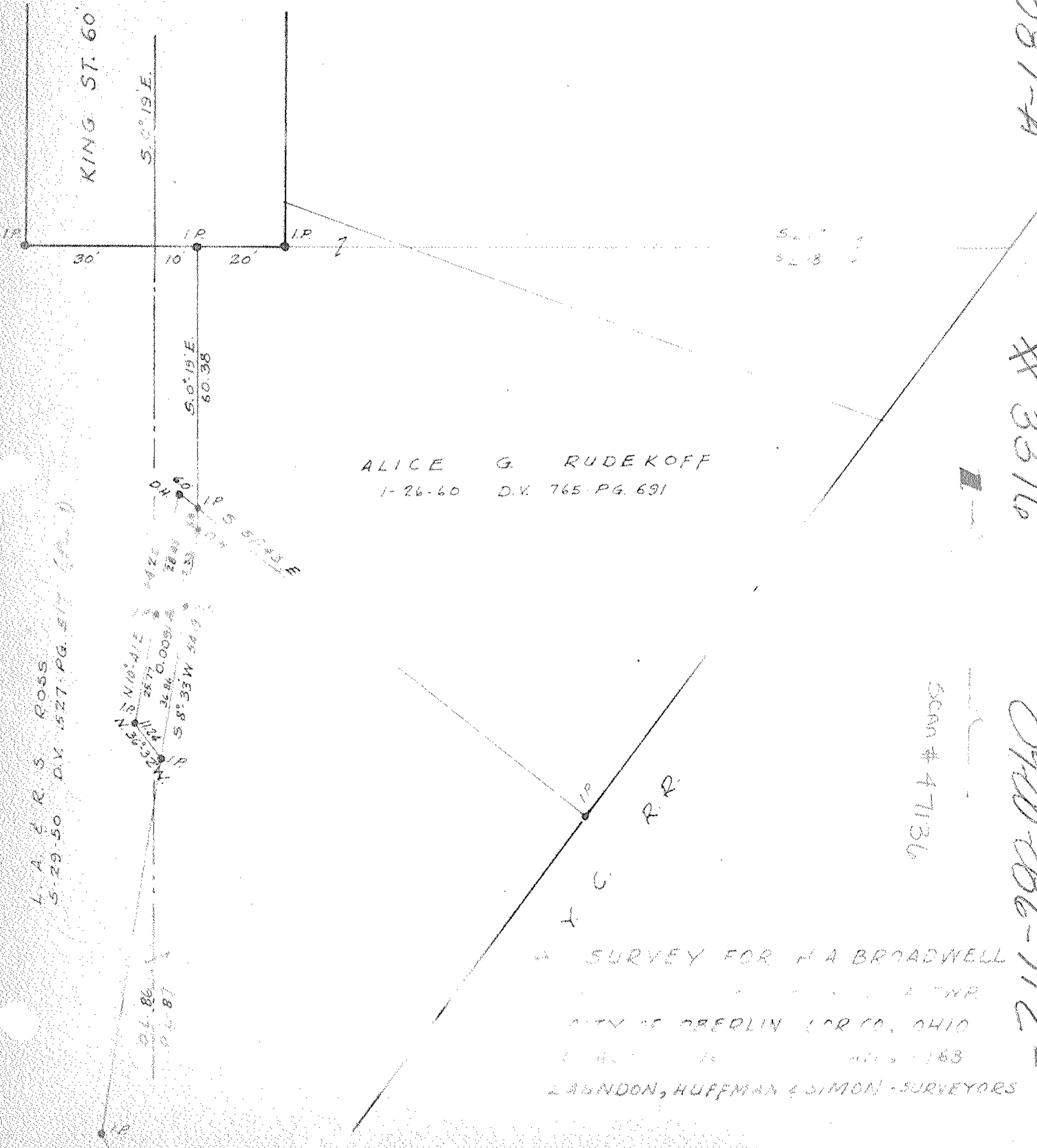
DAVID C. HUFFMAN, P.E.

RODGER G. SIMON, R.S.

MUNICIPAL ENGINEERING

SUBDIVISIONS

LAND SURVEYS



9-00-087-A

# 3316

0900-086-112-

Scan # 47136

L. A. & R. S. ROSS  
5-29-50 D.V. 527 PG. 517 (Part)

N. 10° 41' E. 25.7  
S. 8° 33' W. 54.9  
M. E. 36.86  
O. 0.0091

04.86  
04.87

SURVEY FOR MA BROADWELL  
CITY OF CLEVELAND, OHIO  
LAUNDON, HUFFMAN & SIMON - SURVEYORS