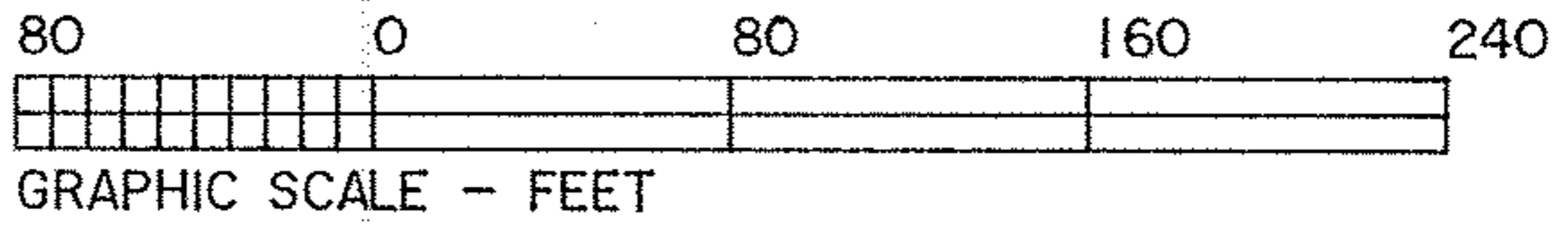


APPROVED
 LORAIN CO.
 PLAT DEPT

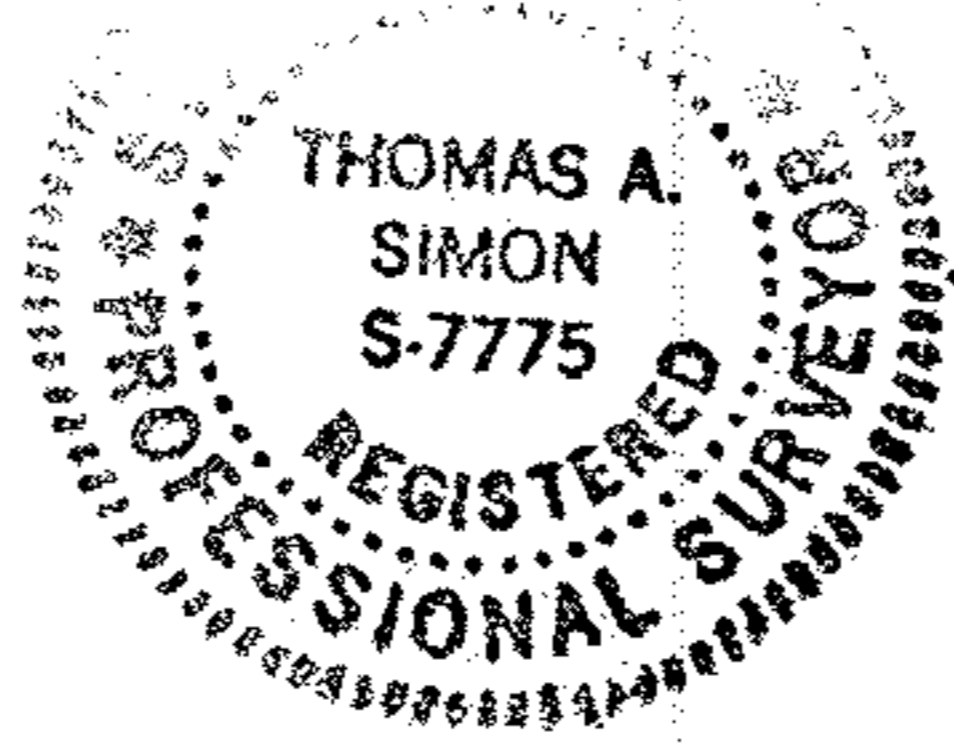
DATE 5-3-12

FILE 2-02-021-B

BY R. MAINES
 #12-02502-A



DIMENSIONS SHOWN ON THIS PLAT ARE EXPRESSED IN FEET AND DECIMAL PARTS THEREOF, ALL BEARINGS ARE TO AN ASSUMED MERIDIAN AND ARE USED TO INDICATE ANGLES ONLY. PERMANENT MONUMENTS WERE FOUND OR SET AT ALL POINTS INDICATED HEREON, ALL OF WHICH I CERTIFY TO BE CORRECT.

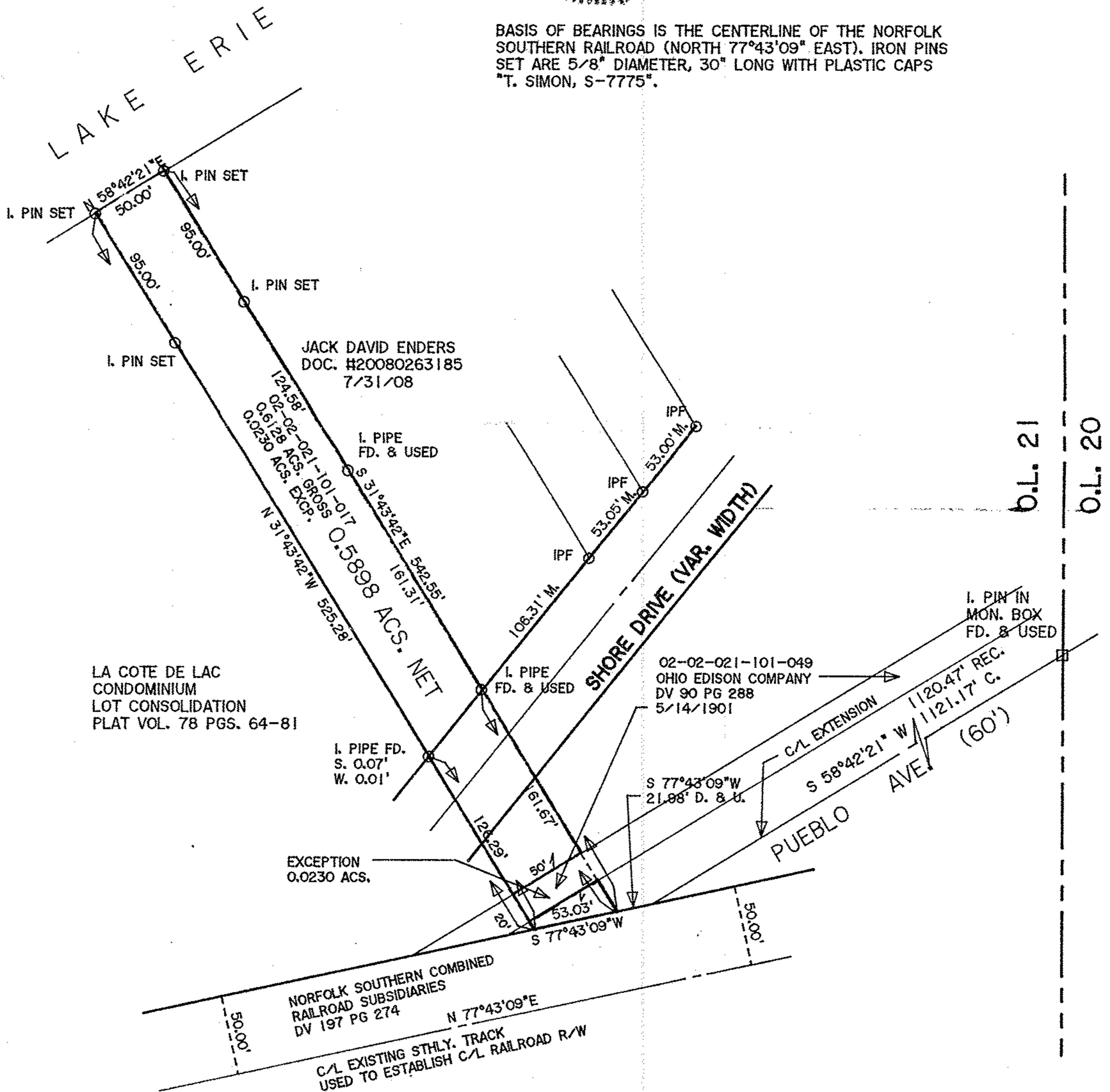


Thomas A. Simon

THOMAS A. SIMON
 REG. PROFESSIONAL SURVEYOR
 NO. S-7775

02-02-021-101-017
 SCAN # 47096

BASIS OF BEARINGS IS THE CENTERLINE OF THE NORFOLK SOUTHERN RAILROAD (NORTH 77°43'09" EAST). IRON PINS SET ARE 5/8" DIAMETER, 30" LONG WITH PLASTIC CAPS "T. SIMON, S-7775".



PLAT OF SURVEY
 FOR
 MANGUS DOTSON

BEING KNOWN AS PART OF
 ORIGINAL BLACK RIVER TOWNSHIP
 LOT NO. 21, TRACT 2

CITY OF LORAIN COUNTY OF LORAIN
 STATE OF OHIO

APRIL, 2012 SCALE: 1" = 80'

THOMAS SIMON & ASSOCIATES, INC.
 PROFESSIONAL LAND SURVEYORS

150 SOUTH OLIVE STREET
 ELYRIA, OHIO 44035
 (440) 327-2925
 FAX 327-2964