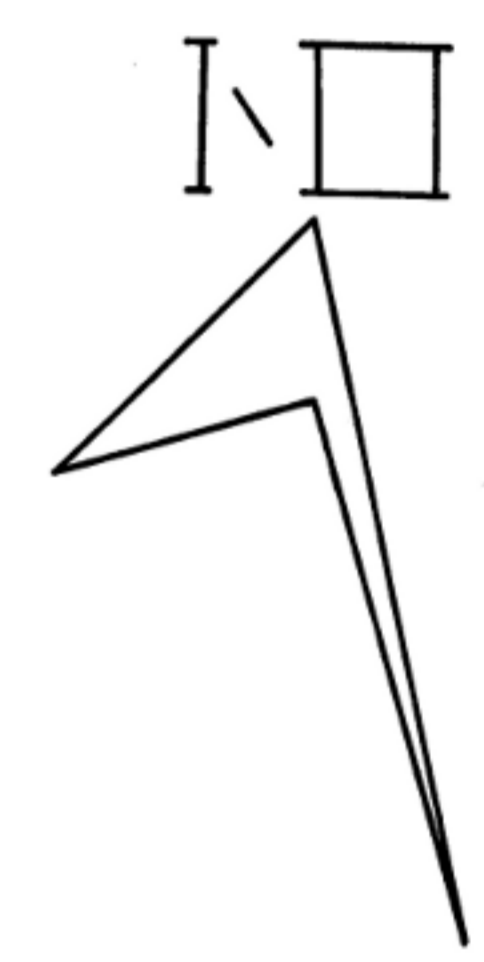
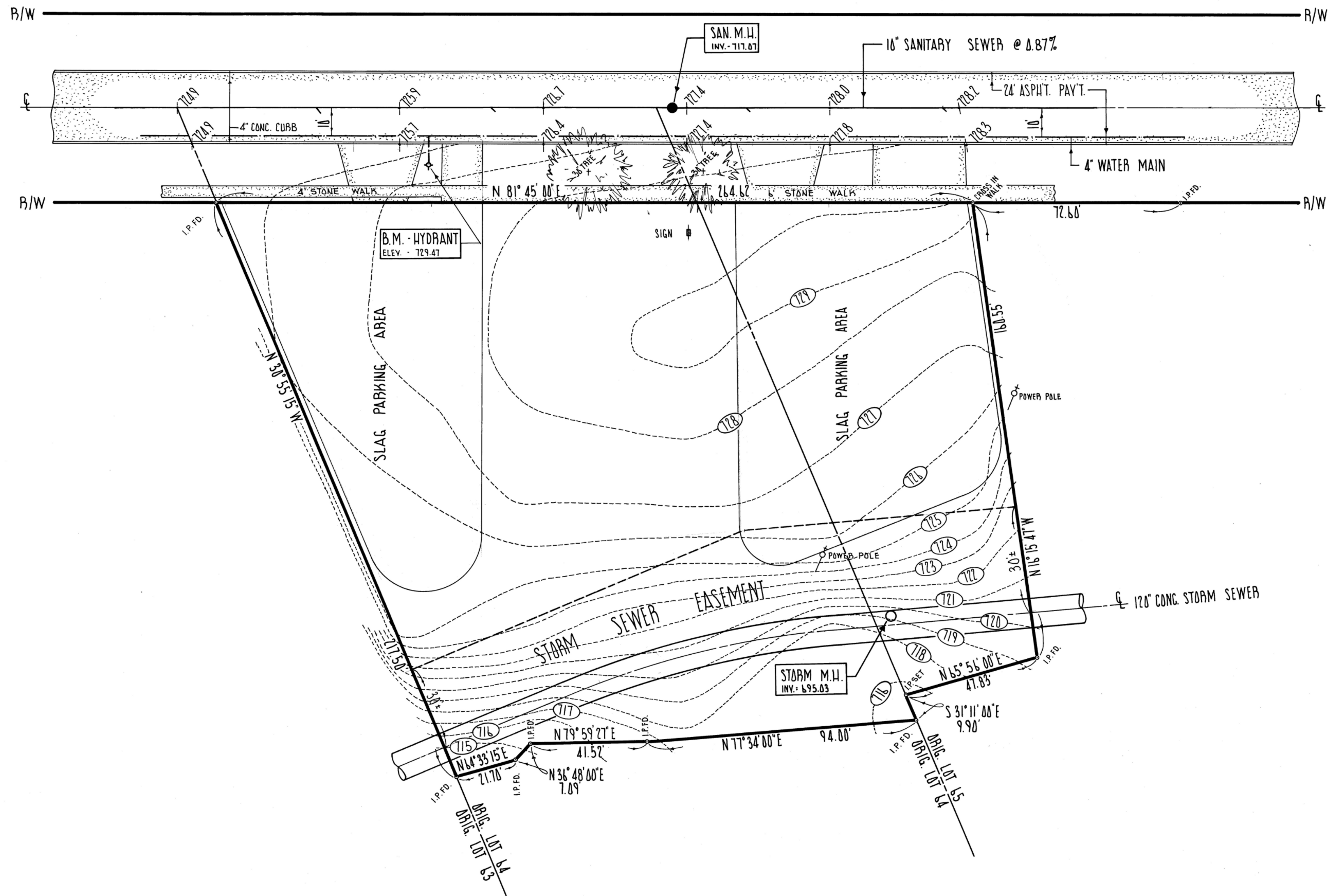


RIDGE STREET 66'




Description	By

PROJECT

SURVEY AND TOPOGRAPHY
OF PART OF
ORIGINAL ELYRIA TOWNSHIP LOT NO. 64 AND 65
EAST OF THE BLACK RIVER
CITY OF ELYRIA - COUNTY OF LORAIN - STATE OF OHIO

PREPARED FOR:

Drawn by: *D.S.L.*
Checked by:
App. by:
Scale: 1" = 20'
Date: 2-12-76



KLEINOEDER-SCHMIDT
and ASSOCIATES

ENGINEERS — SURVEYORS — CONSULTANTS IN LAND PLANNING

ELYRIA - NORWALK - MEDINA OHIO

REFERENCES

SHEET NO. 1 of 1	JOB NO. 72-269
---------------------	-------------------