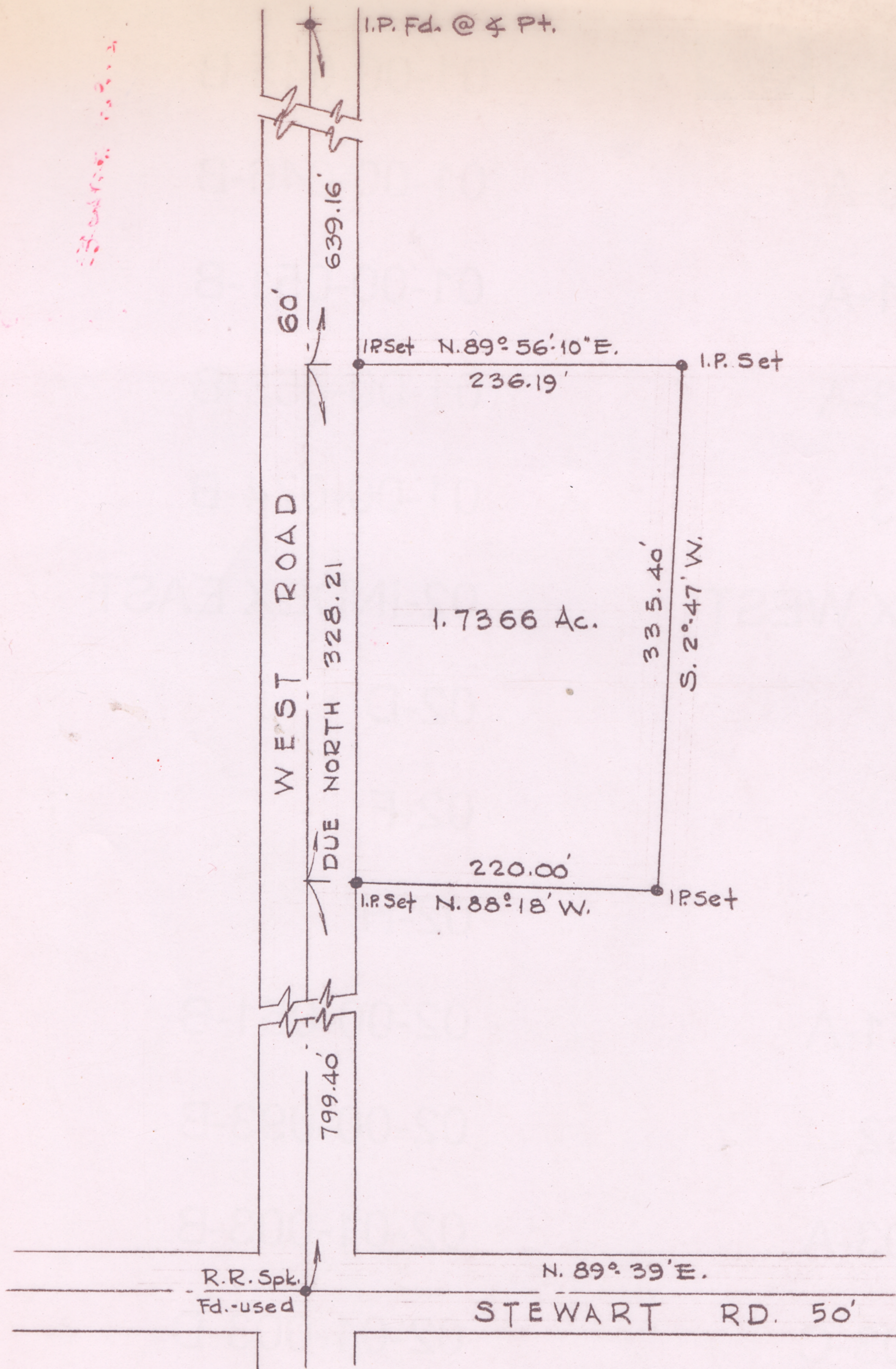


21-17-018-000-007

21-H

SCAN #46945

12/21/73



SURVEY FOR GEORGE HINTZ
 PART OF TR. 17 - OL. 18 HUNTINGTON TWP.
 LORAIN COUNTY - OHIO SCALE 1"=100 FEB. 1973
 LAUNDON · SIMON · CAHL & ASSOC. ENGINEERS · SURVEYORS
 JOB № 73-80 FB 181-1