

14-00-149-000-004
14-E
Scan #
46836

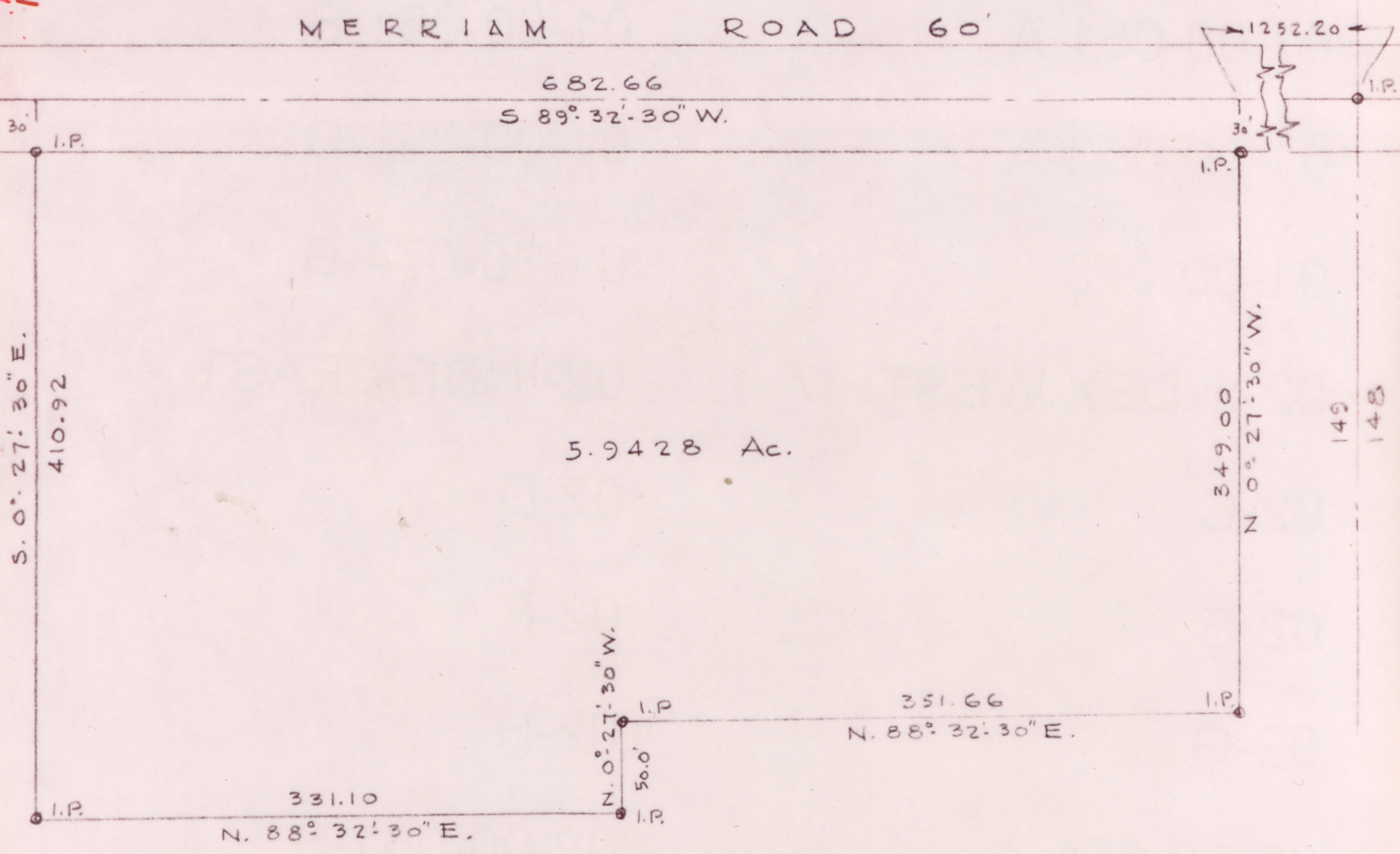
LAUNDON - HUFFMAN - SIMON

CIVIL ENGINEERS - SURVEYORS

200 ROBINSON BUILDING ANNEX
401 W. BROAD ST. ELYRIA, OHIO

THOMAS W. LAUNDON, P.E.
DAVID C. HUFFMAN, P.E.
RODGER G. SIMON, R.S.

MUNICIPAL ENGINEERING
SUBDIVISIONS
LAND SURVEYS



SURVEY FOR ROBERT H. WACKER
O.L. 149 PITTSFIELD TWP.
LORAIN COUNTY OHIO

SCALE 1" = 100'

APRIL 5, 1968

LAUNDON, HUFFMAN & SIMON SURVEYORS