

LAUNDON - HUFFMAN - SIMON

CIVIL ENGINEERS - SURVEYORS

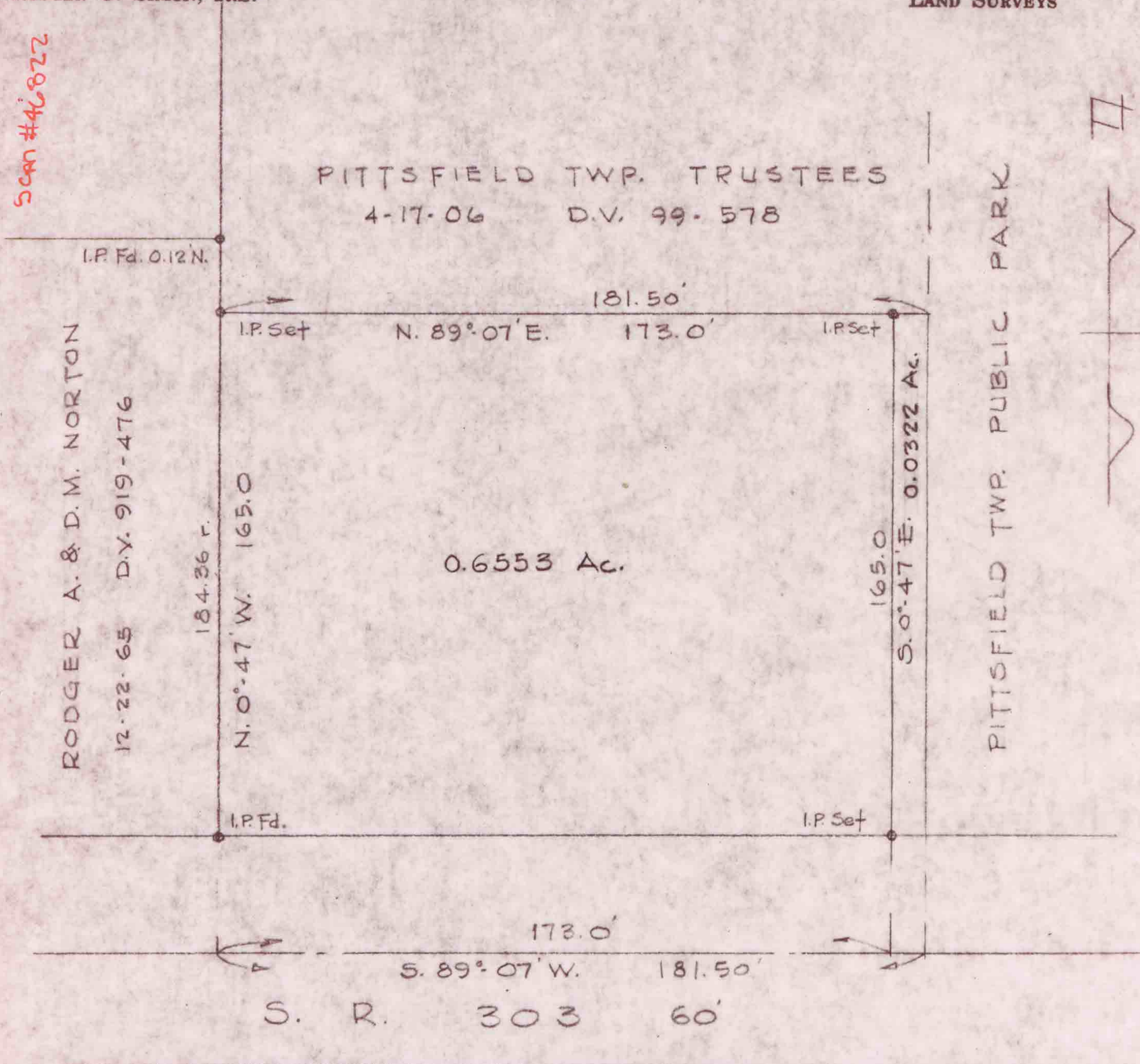
517 BROAD ST. ELYRIA, OHIO

THOMAS W. LAUNDON, P.E.  
DAVID C. HUFFMAN, P.E.  
RODGER G. SIMON, R.S.

MUNICIPAL ENGINEERING  
SUBDIVISIONS  
LAND SURVEYS

14-00-075-000-015  
14-00-075-0  
Scan #46822

PITTSFIELD TWP. TRUSTEES  
4-17-06 D.V. 99-578



SURVEY FOR  
 THE PITTSFIELD UNITED CHURCH OF CHRIST  
 PART OF O.L. 75 PITTSFIELD TWP.  
 COUNTY OF LORAIN STATE OF OHIO  
 AUGUST, 1972