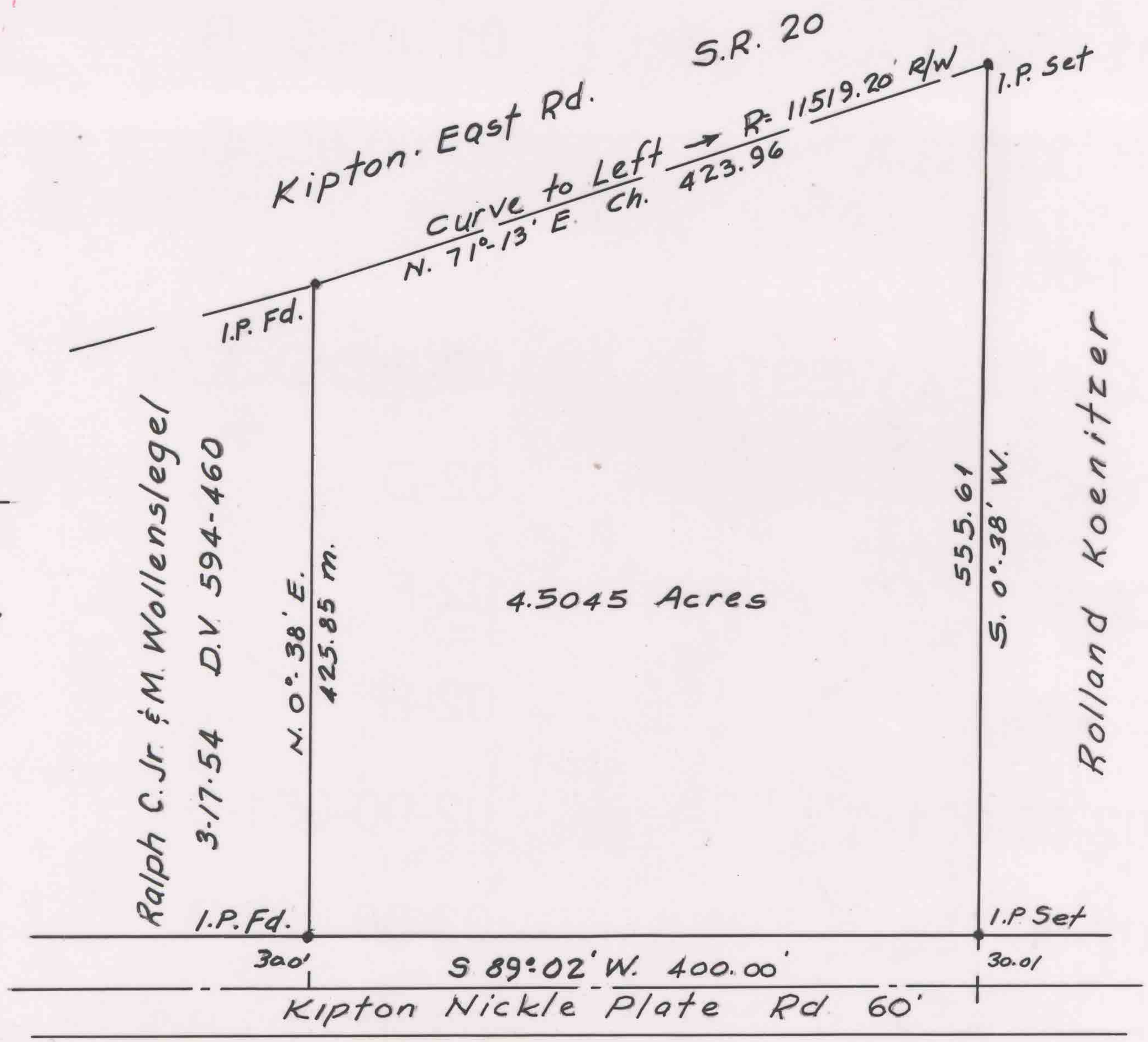
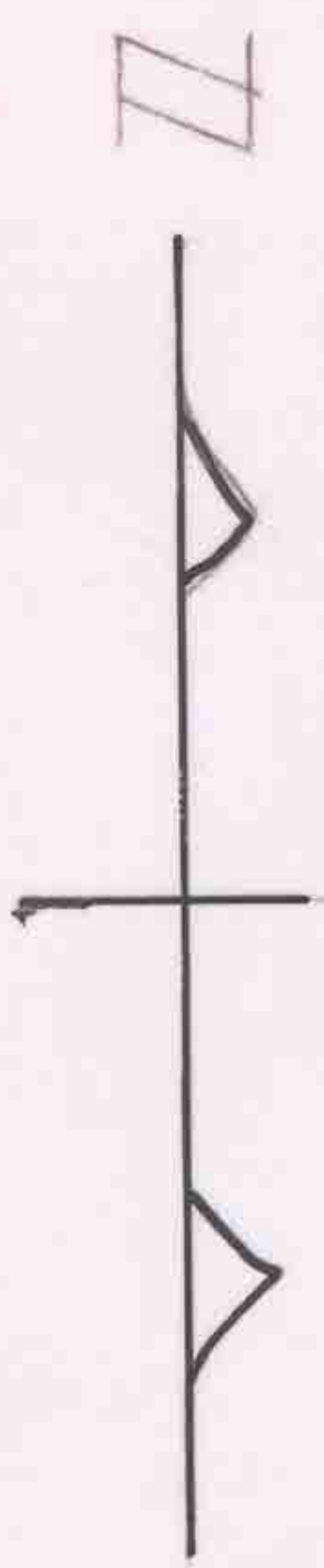


14-00-016-000-015
Scan # 46814
14.C

LAUNDON - HUFFMAN - SIMON
CIVIL ENGINEERS - SURVEYORS
517 BROAD ST. ELYRIA, OHIO

THOMAS W. LAUNDON, P.E.
DAVID C. HUFFMAN, P.E.
RODGER G. SIMON, R.S.

MUNICIPAL ENGINEERING
SUBDIVISIONS
LAND SURVEYS



Survey for Ralph C. Wollenslegel Jr.
O.L. 16 Pittsfield Twp. Lorain Co., Ohio
Scale 1" = 100' September, 1972