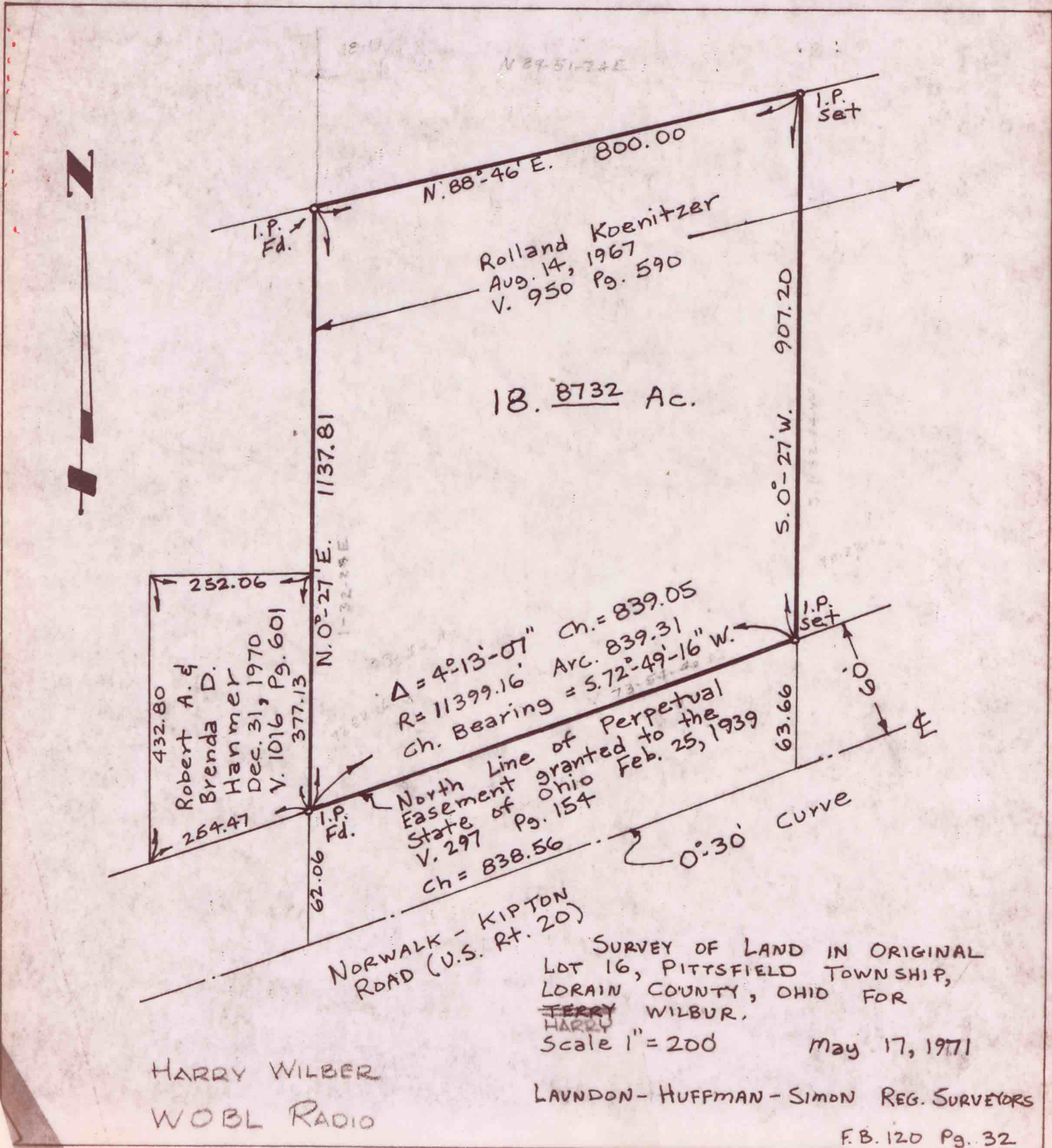


14-00-016-000-013
14-C
SCAN #46013

LAUNDON - HUFFMAN - SIMON
CIVIL ENGINEERS - SURVEYORS
~~200 ROBINSON BUILDING ANNEX~~
401 W. BROAD ST. ELYRIA, OHIO
517

THOMAS W. LAUNDON, P.E.
DAVID C. HUFFMAN, P.E.
RODGER G. SIMON, R.S.

MUNICIPAL ENGINEERING
SUBDIVISIONS
LAND SURVEYS



HARRY WILBER
WOBL RADIO

LAUNDON-HUFFMAN-SIMON REG. SURVEYORS