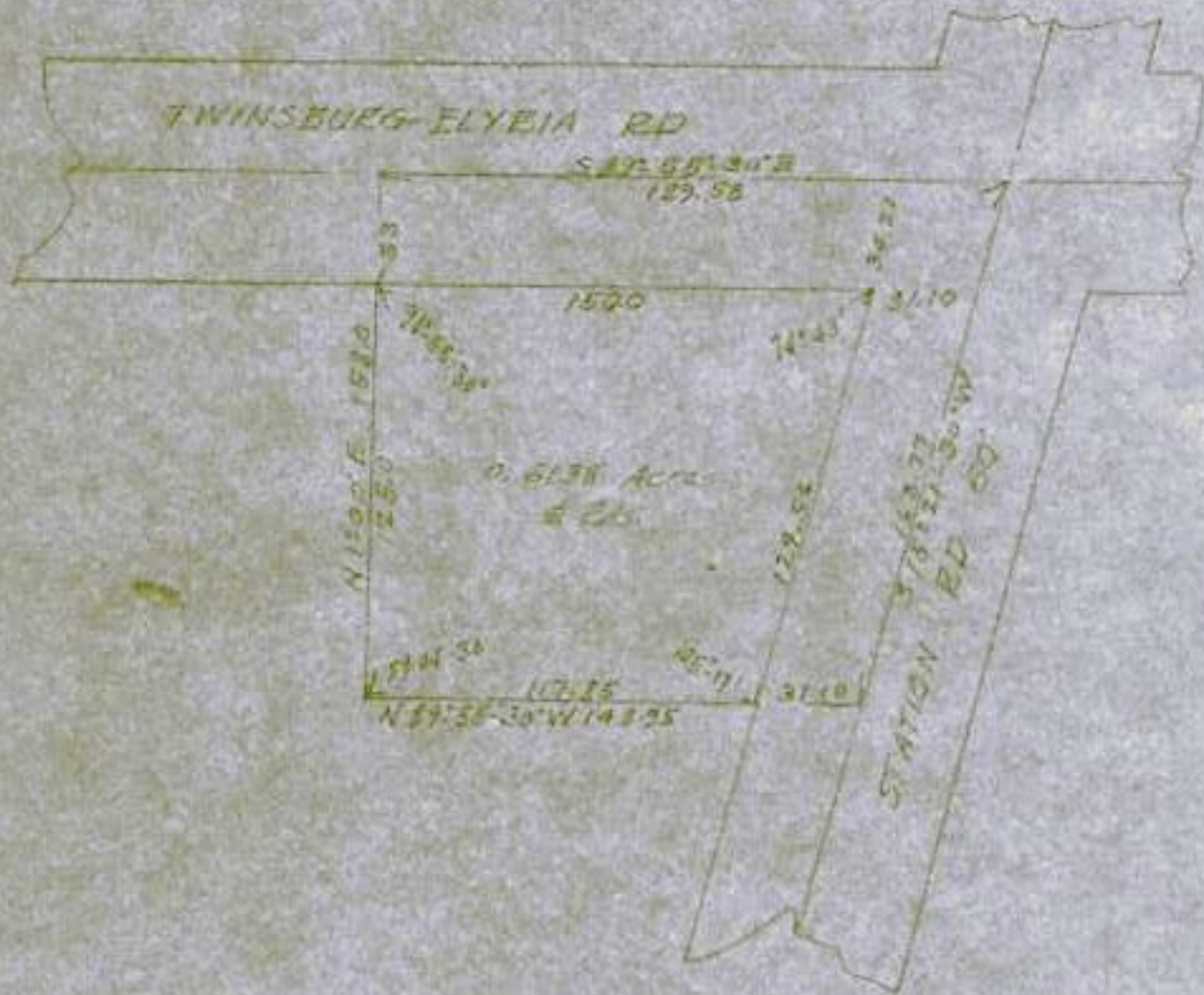


STATE OF OHIO
LICENSED PROFESSIONAL
ENGINEER AND SURVEYOR

OFFICE PHONE 2221

THOMAS W. LAUNDON
PROFESSIONAL ENGINEER - SURVEYOR
148 MIDDLE AVENUE - ELYRIA, OHIO

MUNICIPAL ENGINEER
SURVEYS - CITY, TOWNSHIP
SUB-DIVISIONS



PART OF BLOCK N:1 OF
FRED PEUBBT SUBN OF Q.L.75
COLUMBIA TWP. LOHAIN CO. OHIO
SCALE 1"=60'