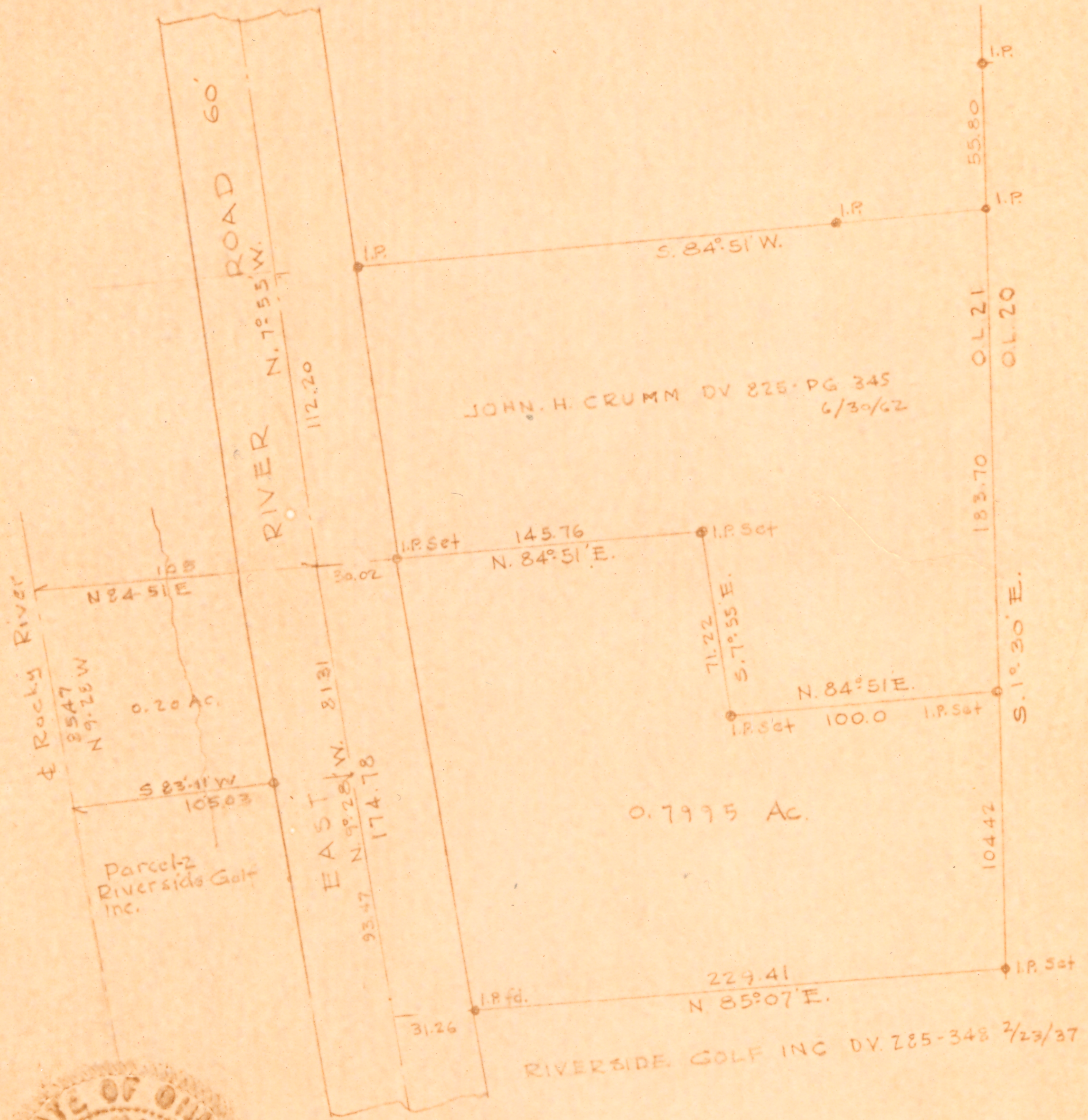


12-00-021-105
12-00-021-A
SCAN #
46778

LAUNDON - HUFFMAN - SIMON
CIVIL ENGINEERS - SURVEYORS
200 ROBINSON BUILDING ANNEX
401 W. BROAD ST. ELYRIA, OHIO

THOMAS W. LAUNDON, P.E.
DAVID C. HUFFMAN, P.E.
RODGER G. SIMON, R.S.

MUNICIPAL ENGINEERING
SUBDIVISIONS
LAND SURVEYS



SURVEY OF THE DOWLER PROPERTY - CLEVE. TRUST. CO.
PART OF O.L. 21 COLUMBIA TWNP.
RAIN COUNTY OHIO
SCALE 1" = 60 SEPT. 1967.