

LAUNDON - HUFFMAN - SIMON

CIVIL ENGINEERS - SURVEYORS

200 ROBINSON BUILDING ANNEX

401 W. BROAD ST. ELYRIA, OHIO

THOMAS W. LAUNDON, P.E.

DAVID C. HUFFMAN, P.E.

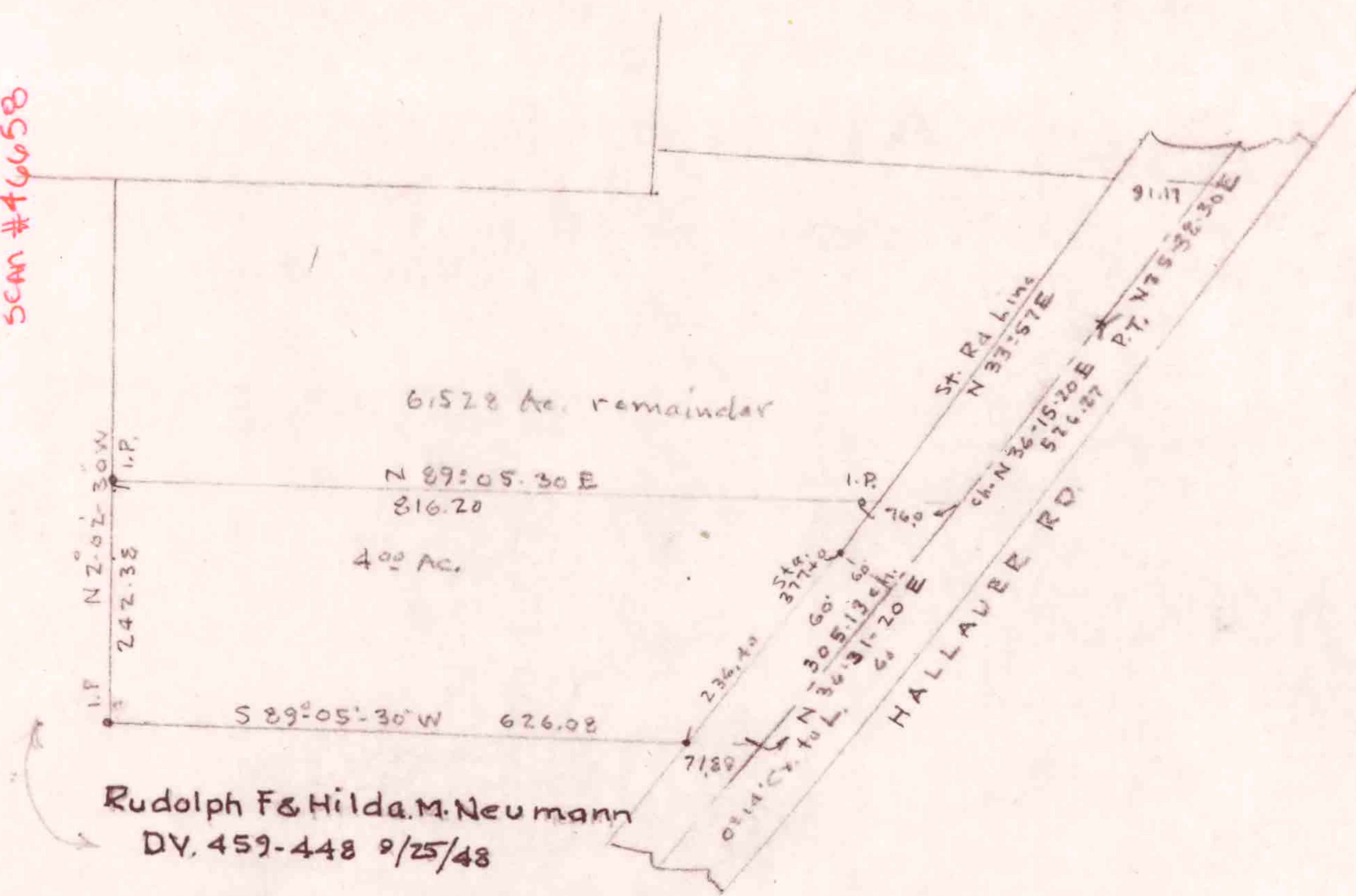
RODGER G. SIMON, R.S.

MUNICIPAL ENGINEERING

SUBDIVISIONS

LAND SURVEYS

9-00-099-000-082  
9-00-099-000-085  
9-00-099-000-086  
9-00-099-8  
SCAN #46658



Survey for Bernice A. Clarke  
Ol. 99 Russia Twp.  
Lorain Co. Ohio Scale 1" = 200'  
1/27/69 Laundon-Huffman-Simon.