

9-00-096-102-022
9-00-096-A
SCAN # 46640

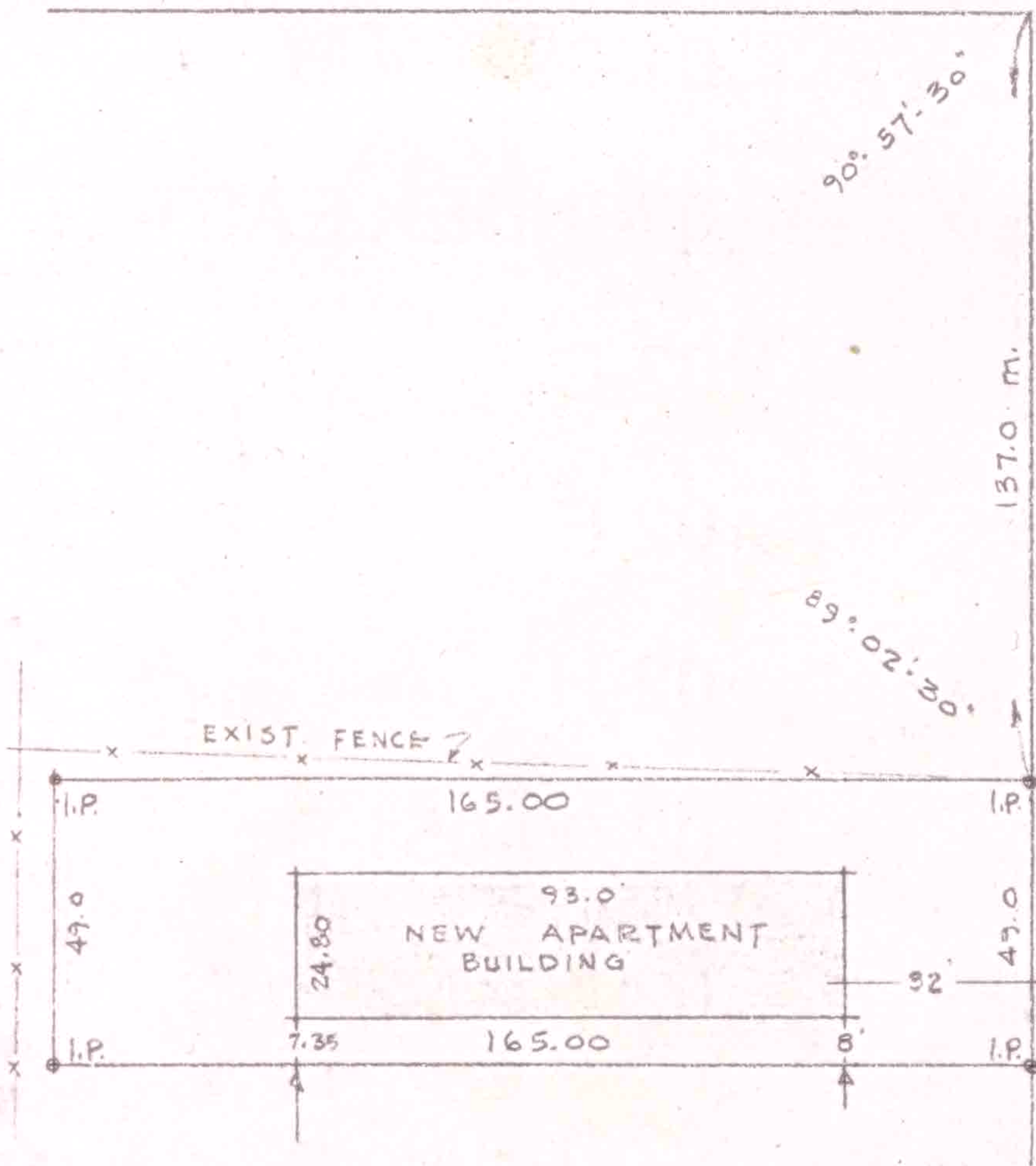
LAUNDON - HUFFMAN - SIMON
CIVIL ENGINEERS - SURVEYORS
200 ROBINSON BUILDING ANNEX
401 W. BROAD ST. ELYRIA, OHIO

THOMAS W. LAUNDON, P.E.
DAVID C. HUFFMAN, P.E.
RODGER G. SIMON, R.S.

MUNICIPAL ENGINEERING
SUBDIVISIONS
LAND SURVEYS

LOCUST ST. 40'

SOUTH PLEASANT ST. 46.20



SURVEY FOR CLARK BROS. INC.
NLY 49.0 5/8 35 PARKER, PENFIELD & STEVEN'S ADDN.
P.V.1 PG.7 CITY OF OBERLIN, LORAIN COUNTY, OHIO
PART OF ORIGINAL RUSSIA TWP. LOT 96
SURVEYED MARCH, 1970