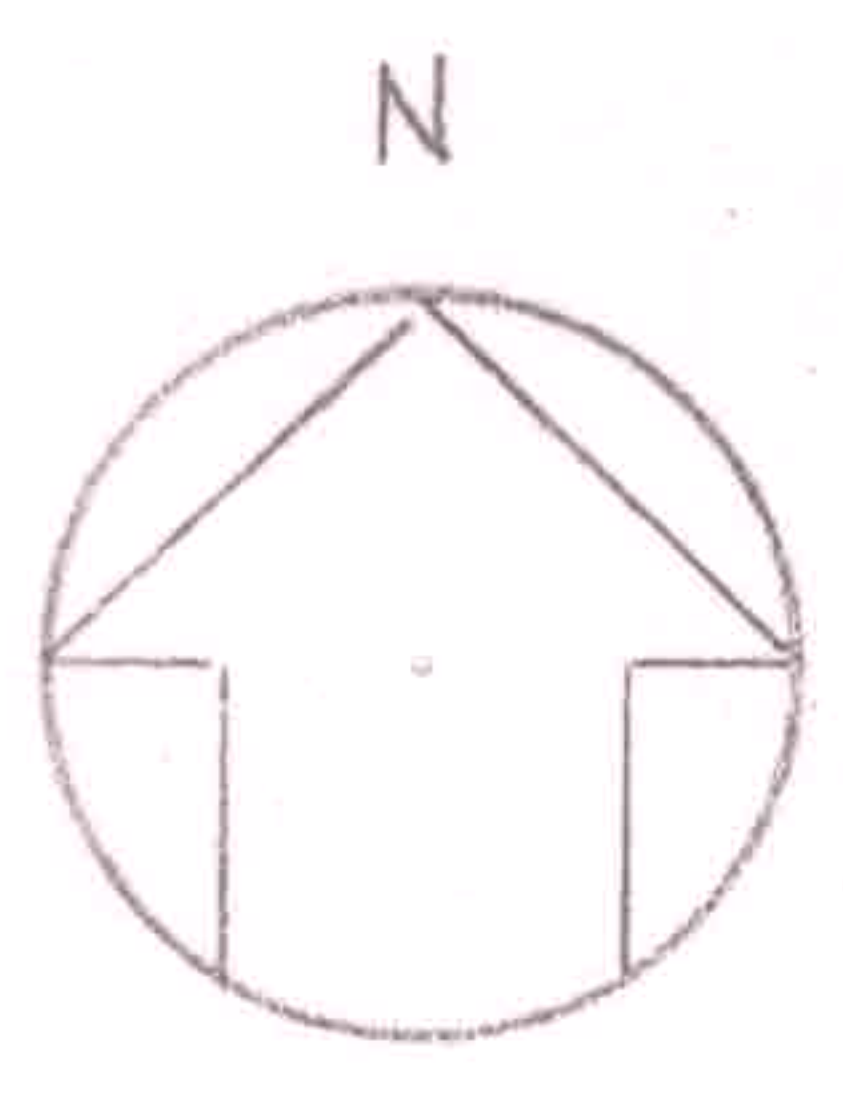
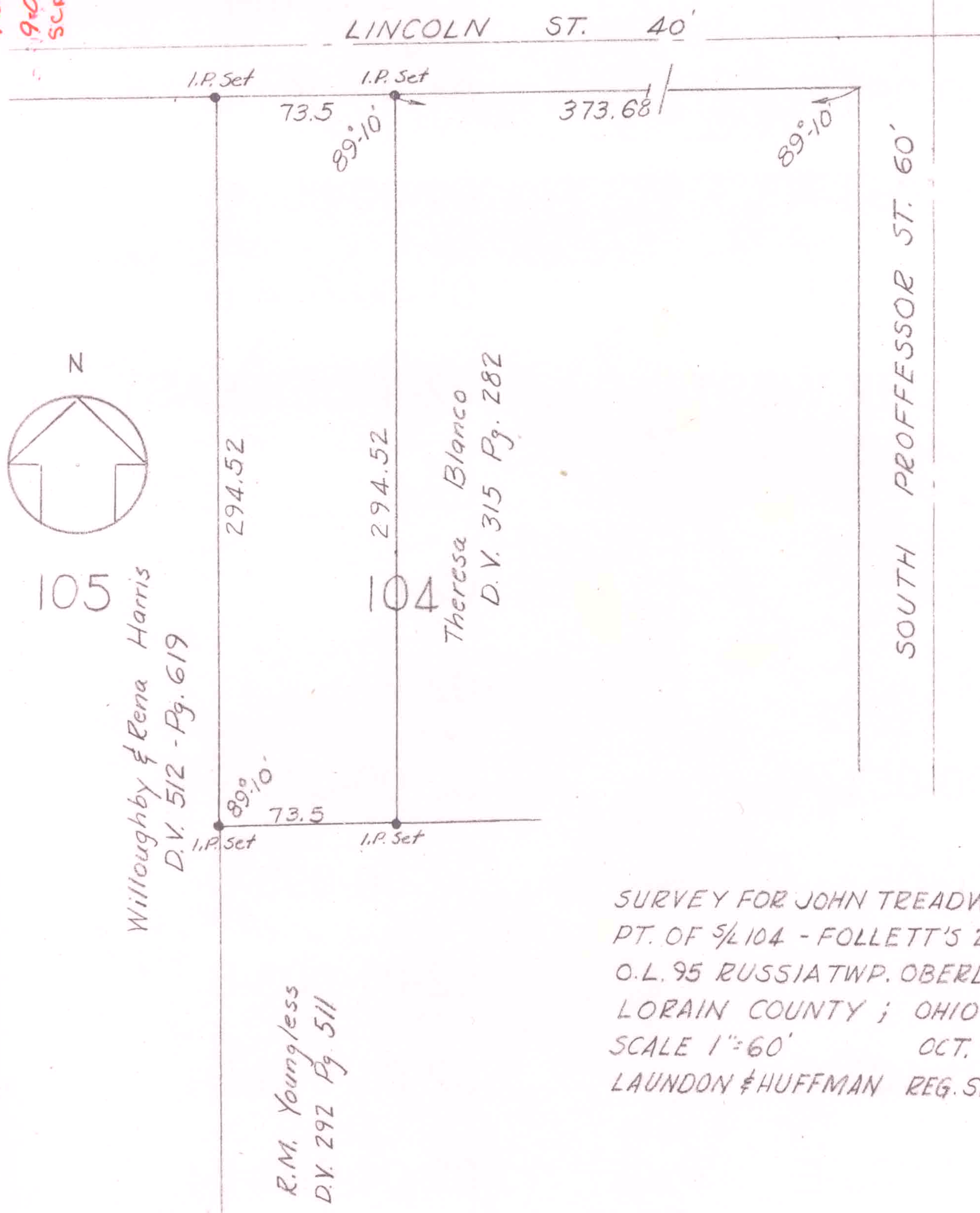


9-00-095-108-010
9-00-095-108-011
9-00-095-B
SCAN #46638



105

Willoughby & Rena Harris
D.V. 512 - Pg. 619

R.M. Youngless
D.V. 292 Pg. 511

104

Theresa Blanco
D.V. 315 Pg. 282

SOUTH PROFESSOR ST. 60'

LINCOLN ST. 40'

SURVEY FOR JOHN TREADWELL
PT. OF 1/4 104 - FOLLETT'S 2ND ADD'N.
O.L. 95 RUSSIA TWP. OBERLIN CITY
LORAIN COUNTY ; OHIO
SCALE 1"=60' OCT. 1958
LAUNDON & HUFFMAN REG. SURVEYORS