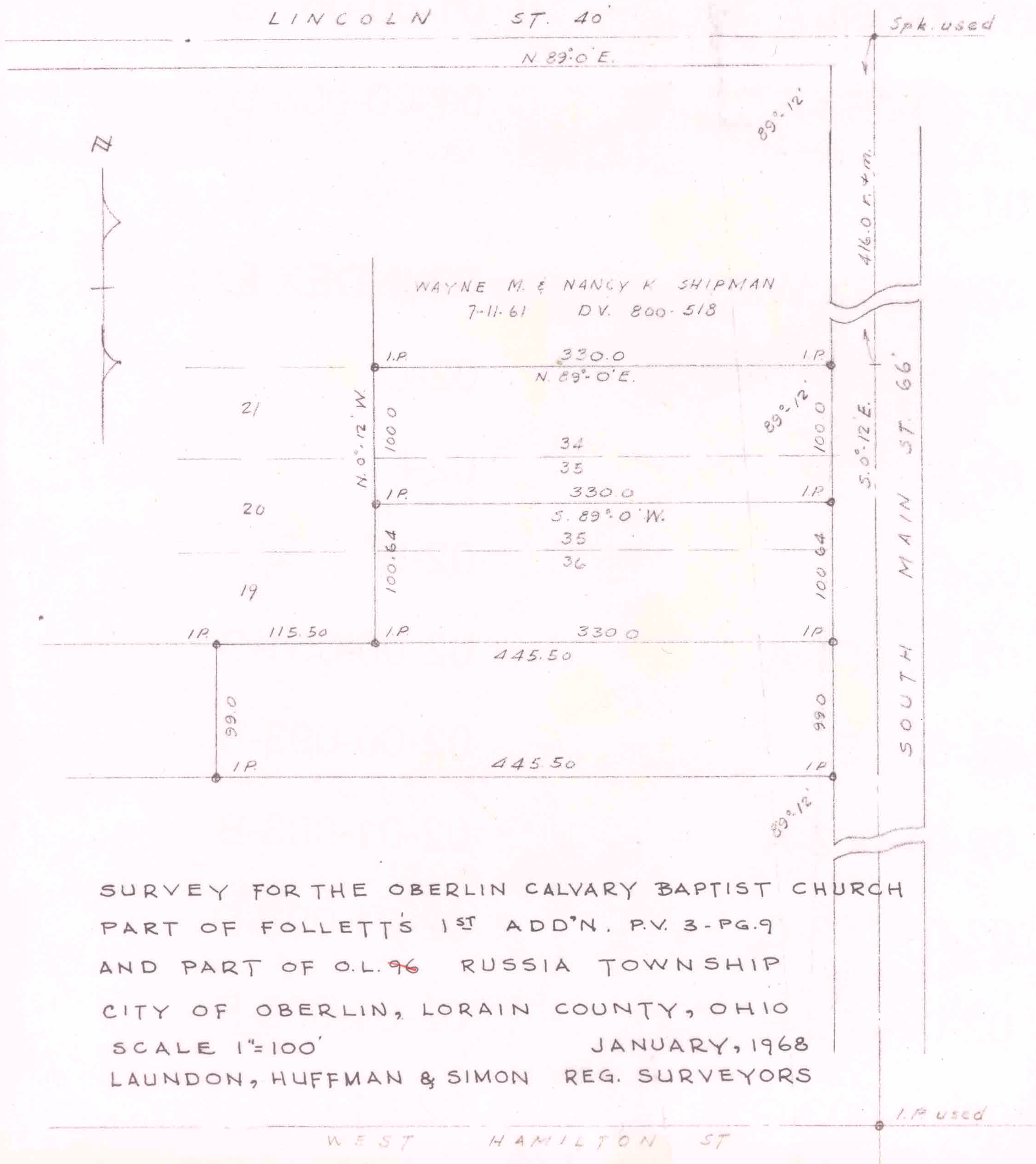


9-00-095-107-027
 9-00-095-107-028
 9-00-095-107-030
 9-00-095-107-031
 9-00-095-8-30
 SCAND# 46637

LAUNDON - HUFFMAN - SIMON
 CIVIL ENGINEERS - SURVEYORS
 200 ROBINSON BUILDING ANNEX
 401 W. BROAD ST. ELYRIA, OHIO

THOMAS W. LAUNDON, P.E.
 DAVID C. HUFFMAN, P.E.
 RODGER G. SIMON, R.S.

MUNICIPAL ENGINEERING
 SUBDIVISIONS
 LAND SURVEYS



SURVEY FOR THE OBERLIN CALVARY BAPTIST CHURCH
 PART OF FOLLETT'S 1ST ADD'N. P.V. 3-PG.9
 AND PART OF O.L. 96 RUSSIA TOWNSHIP
 CITY OF OBERLIN, LORAIN COUNTY, OHIO
 SCALE 1"=100' JANUARY, 1968
 LAUNDON, HUFFMAN & SIMON REG. SURVEYORS