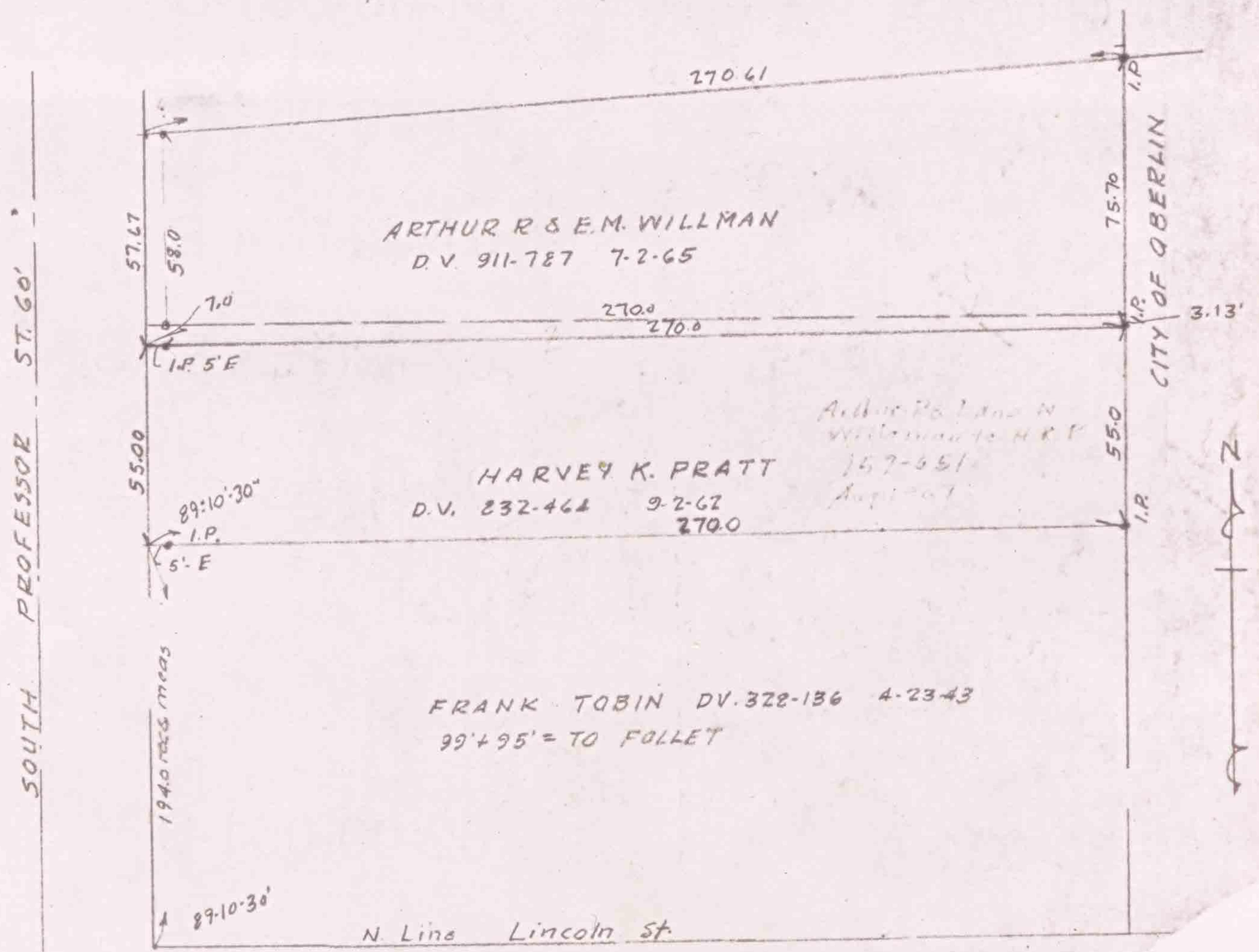


9-00-095-106
9-00-095-B
SCAN #46636

LAUNDON - HUFFMAN - SIMON
CIVIL ENGINEERS - SURVEYORS
200 ROBINSON BUILDING ANNEX
401 W. BROAD ST. ELYRIA, OHIO

THOMAS W. LAUNDON, P.E.
DAVID C. HUFFMAN, P.E.
RODGER G. SIMON, R.S.

MUNICIPAL ENGINEERING
SUBDIVISIONS
LAND SURVEYS



SURVEY FOR
ARTHUR R & E.M. WILLMAN
HARVEY, K. PRATT
PART OUTLOT 60 FOLLET FIRST ADDN
CITY OF OBERLIN LORAIN CO. OHIO
SCALE 1" = 50' 1-14-67
LAUNDON-HUFFMAN-SIMON-SURVEYORS