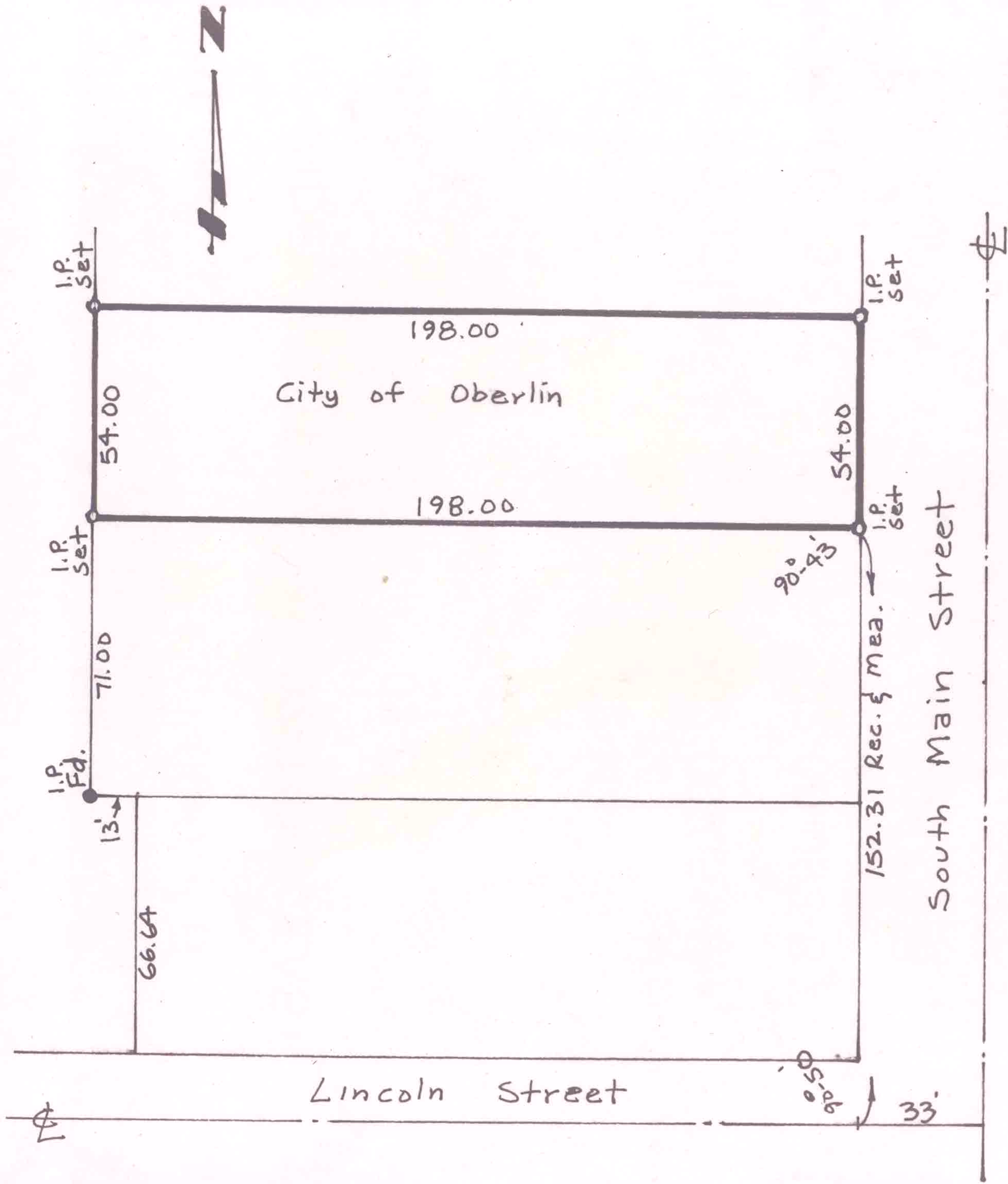


LAUNDON - HUFFMAN - SIMON  
 CIVIL ENGINEERS - SURVEYORS  
 200 ROBINSON BUILDING ANNEX  
 401 W. BROAD ST. ELYRIA, OHIO  
 517

MUNICIPAL ENGINEERING  
 SUBDIVISIONS  
 LAND SURVEYS

THOMAS W. LAUNDON, P.E.  
 DAVID C. HUFFMAN, P.E.  
 RODGER G. SIMON, R.S.



SURVEY FOR THE CITY OF OBERLIN  
 Part of outlet 60, Follets 1st  
 Subdivision, Original Lot 95, Russia  
 Township, City of Oberlin, Lorain  
 County, Ohio  
 Scale 1" = 40'

May 20, 1971  
 F.B. 161 Pg. 52

9-00-095-106-025  
 9-00-095-B  
 SCAN#46634