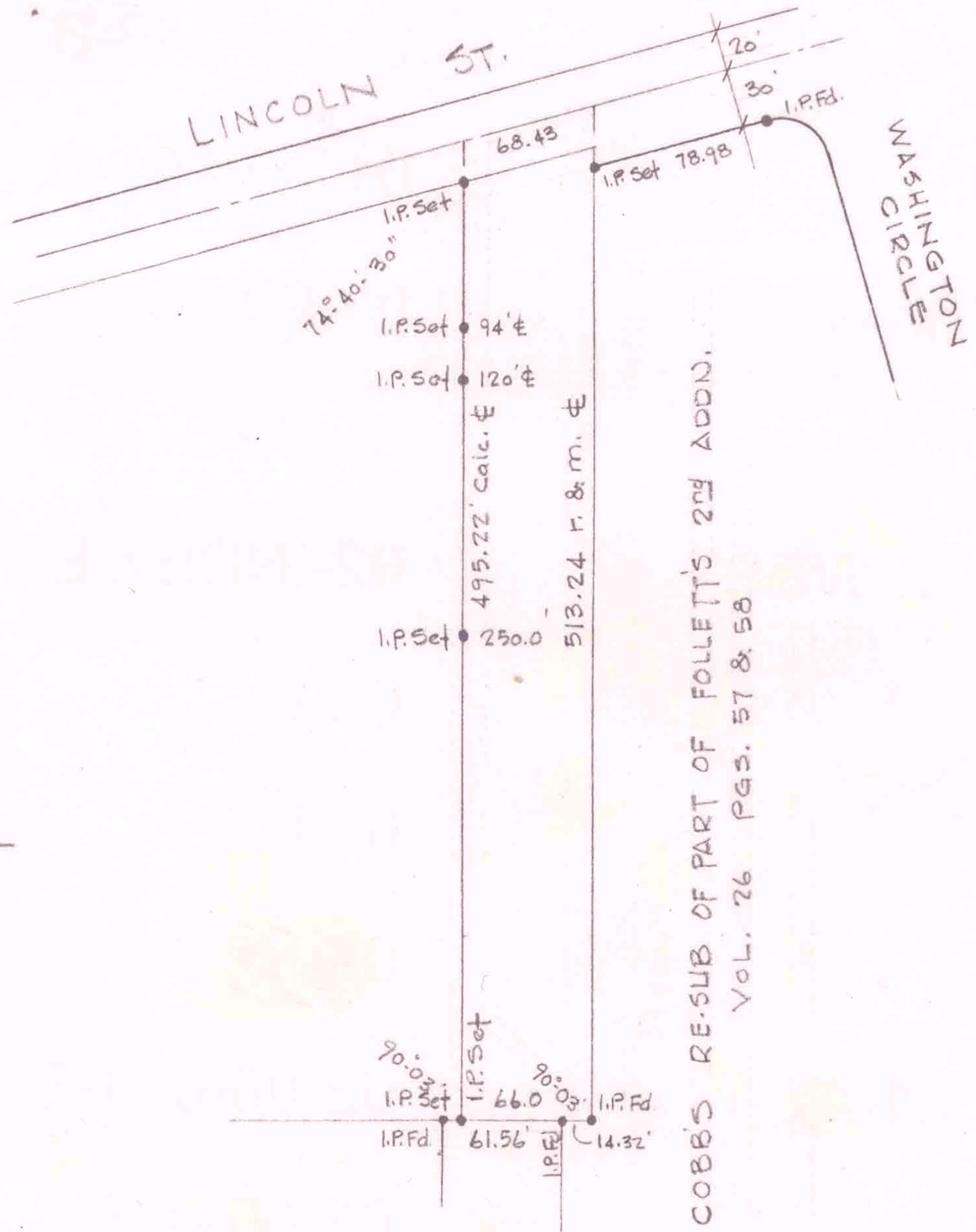


9-00-095-103-015
 9-00-095-A.C. # 46631
 SCAN # 46631



SURVEY FOR

GENE TOWNSEL

PART OF FOLLETT'S 2ND ADD'N. RV. 3 P. 9
 CITY OF OBERLIN - LORAIN COUNTY - OHIO
 SCALE 1"=100' JUNE, 1978
 LAUNDON • SIMON • CAHL & ASSOC.
 ENGINEERS SURVEYORS

78-745
 FB 138/25