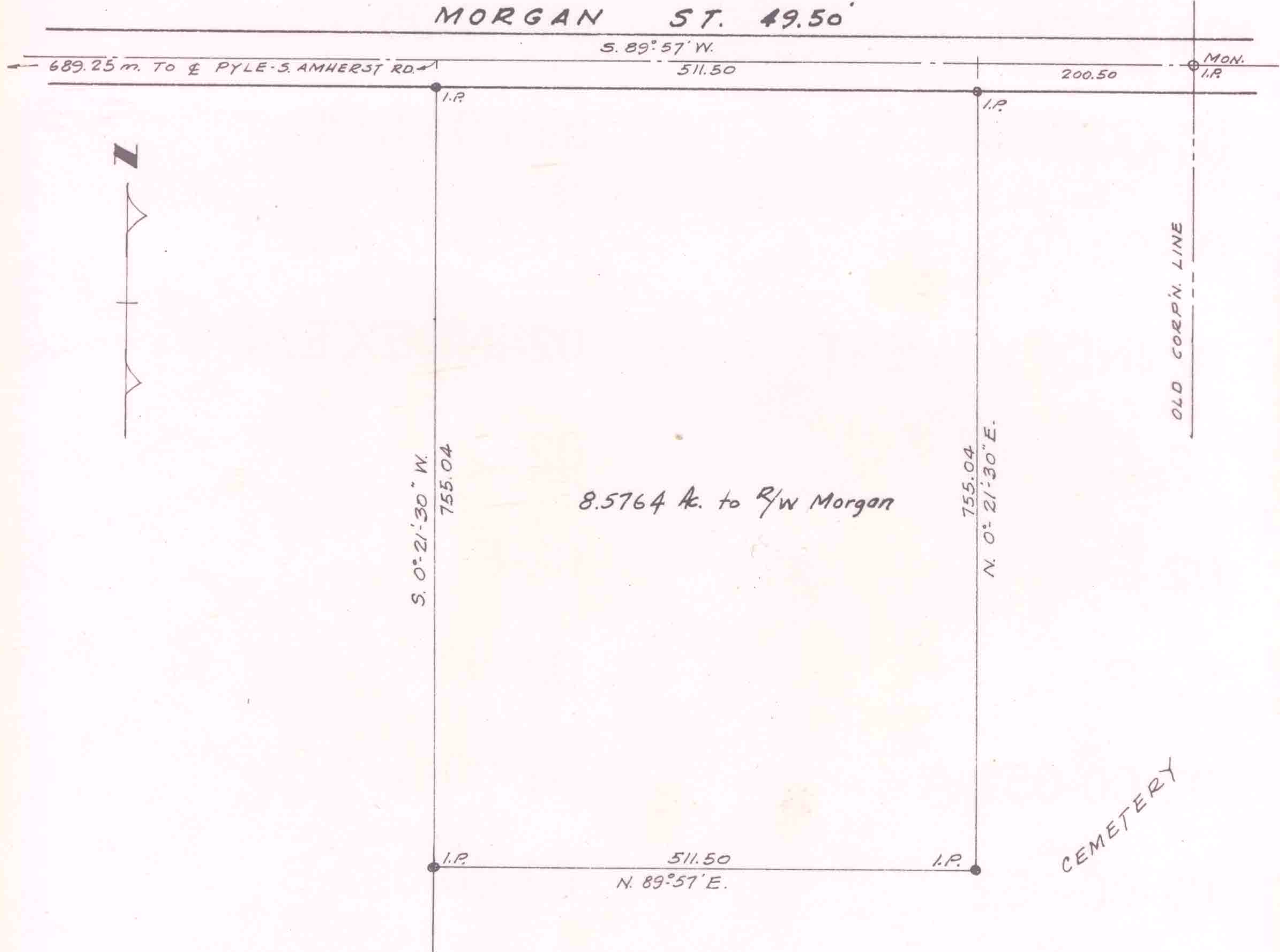


9-00-094-101-002
9-00-094-A
SCAN #46627

LAUNDON - HUFFMAN - SIMON
CIVIL ENGINEERS - SURVEYORS
200 ROBINSON BUILDING ANNEX
401 W. BROAD ST. ELYRIA, OHIO

THOMAS W. LAUNDON, P.E.
DAVID C. HUFFMAN, P.E.
ROGER G. SIMON, R.S.

MUNICIPAL ENGINEERING
SUBDIVISIONS
LAND SURVEYS



WESTWOOD

SURVEY FOR OBERLIN COLLEGE
PART OF O.L. 94 RUSSIA TOWNSHIP
CITY OF OBERLIN LORAIN COUNTY OHIO
SCALE 1" = 150' NOV., 1967