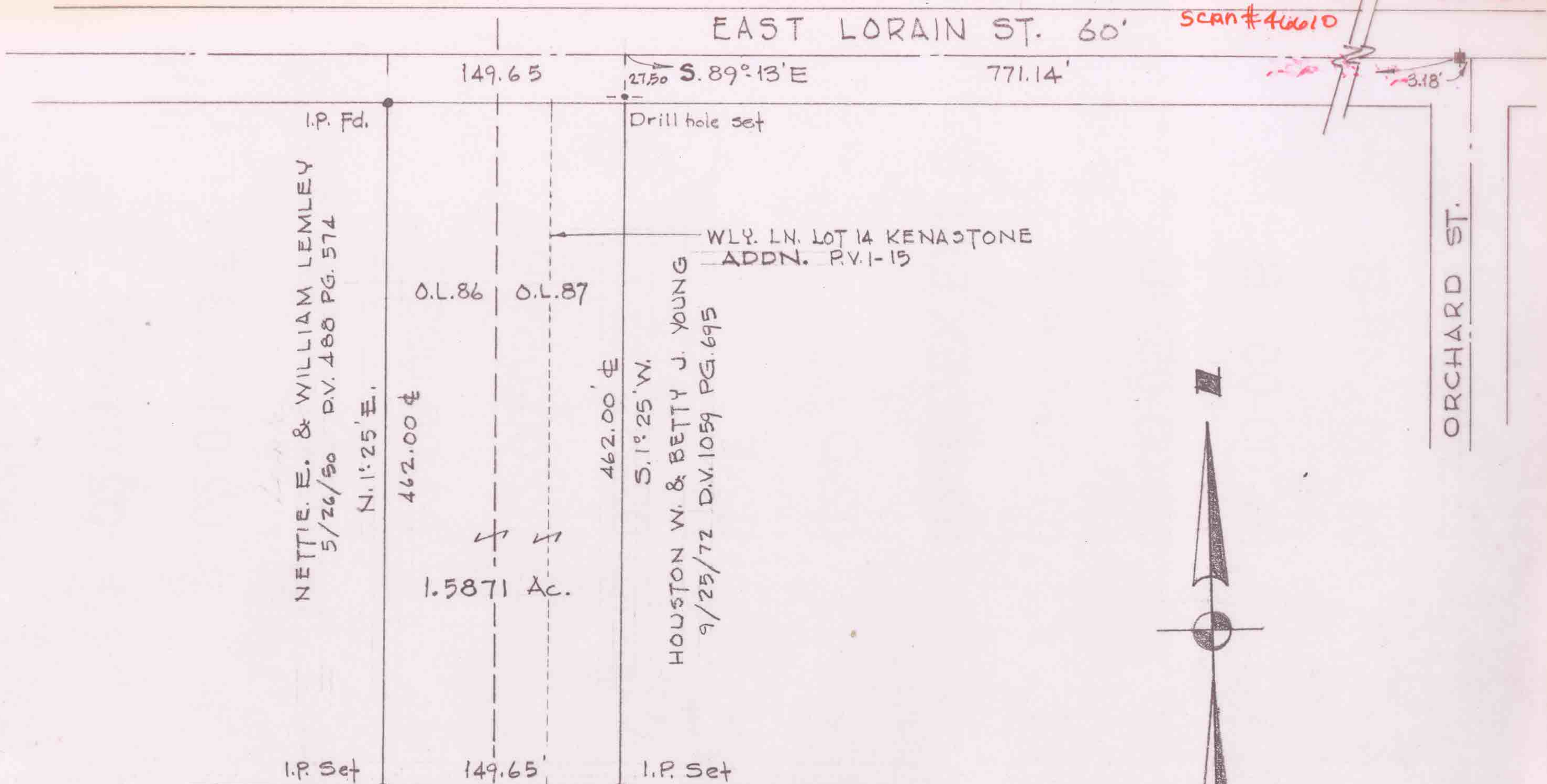


9-00-086-109 9-00-086-B
9-00-087-101 9-00-087-A
SCAN#46610



NETTIE E. & WILLIAM LEMLEY
5/26/50 D.V. 488 PG. 574

N. 1° 25' E.

462.00'

O.L. 86

O.L. 87

1.5871 Ac.

462.00'

S. 1° 25' W.

HOUSTON W. & BETTY J. YOUNG
9/25/72 D.V. 1059 PG. 695

WLY. LN. LOT 14 KENASTONE
ADDN. P.V. 1-15

27.50 S. 89° 13' E

771.14'

Drill hole set

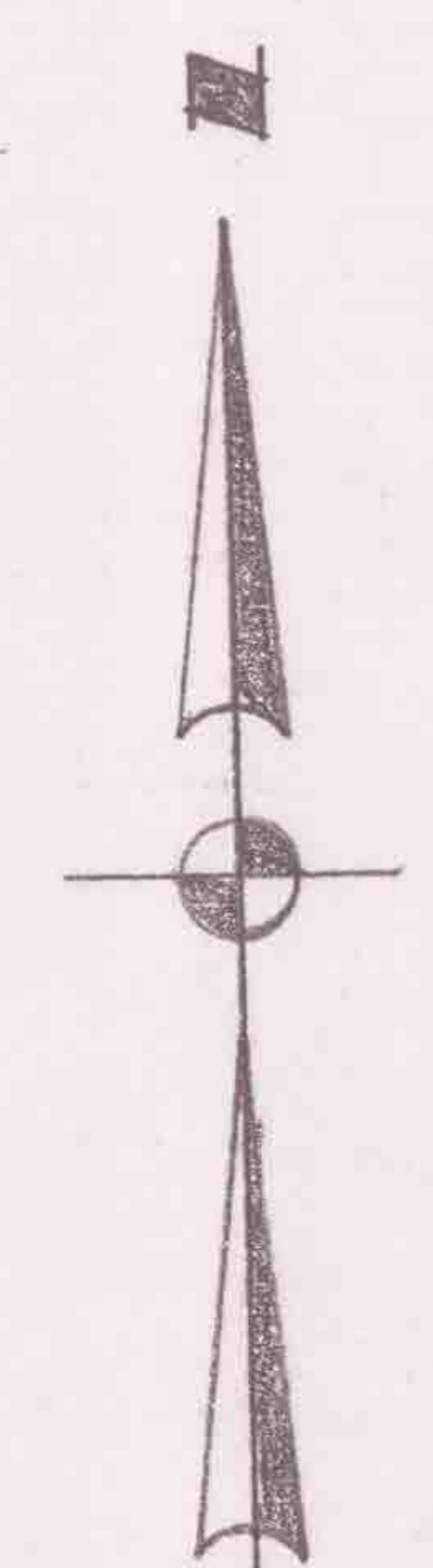
THOMAS O. MURPHY
8/14/67 D.V. 950-372

RICHARD C. & DINA B. SCHOONMAKER
10/27/64 D.V. 894-51

N. 89° 13' W

HARRY & MYRTLE MAY PODLICH
8/12/71 D.V. 1030 PG. 225

I.P. Set



ORCHARD ST.

EAST LORAIN ST. 60'

SURVEY FOR OBERLIN COLLEGE

PART OF O.L.'s 86 & 87 RUSSIA TOWNSHIP
CITY OF OBERLIN, LORAIN COUNTY, OHIO

SCALE 1"=100' SEPT. 13, 1976
LAUNDON • SIMON • CAHL & ASSOC.
ENGINEERS SURVEYORS

Job No. 76-528

F.B. 157/76