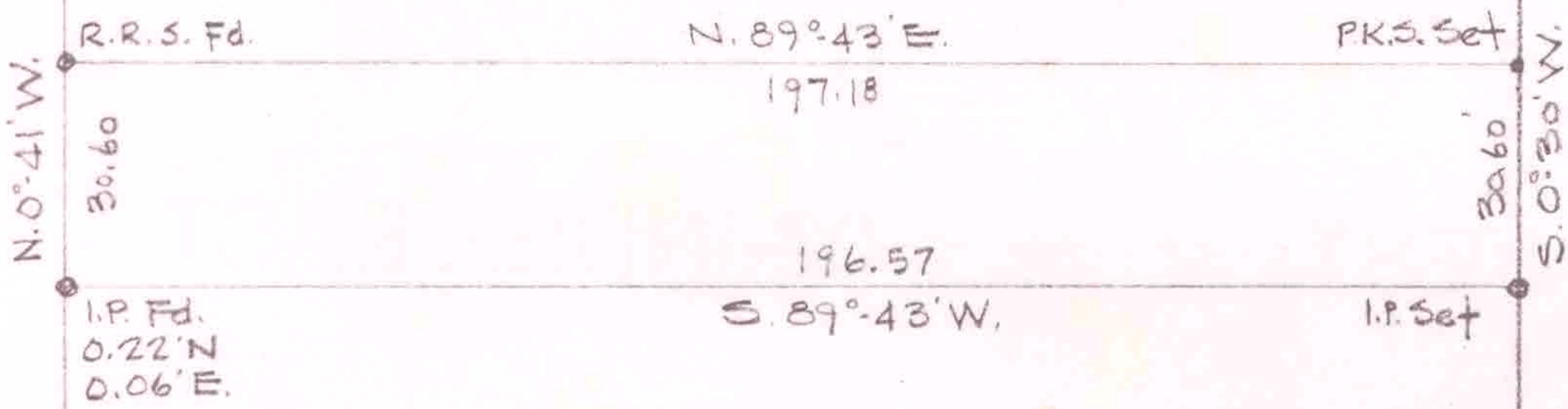


9-00-086-102-096
9-00-086-A
SCAN # 42690

FIRELANDS RETIREMENT CENTER

11-9-64 D.V. 595 PG. 254

SOUTH PLEASANT ST. 46.20'



FORMERLY CLOTELL & KATHLEEN THOMPSON
D.V. 384 PG. 442



SKETCH FOR KENNY CLARK

PART OF S/L3 OF HAZEN & ELLIS SUBD. PV. 1-41
O.L. 86 RUSSIA TWP. LORAIN COUNTY OHIO
SCALE 1"=40' SEPT. 1977
LAUNDON • SIMON • CAHL & ASSOC.
ENGINEERS SURVEYORS