

9-00-085-103-02
9-00-085-103-03
9-00-085-103-031
9-00-085-A
SCAN # 46579

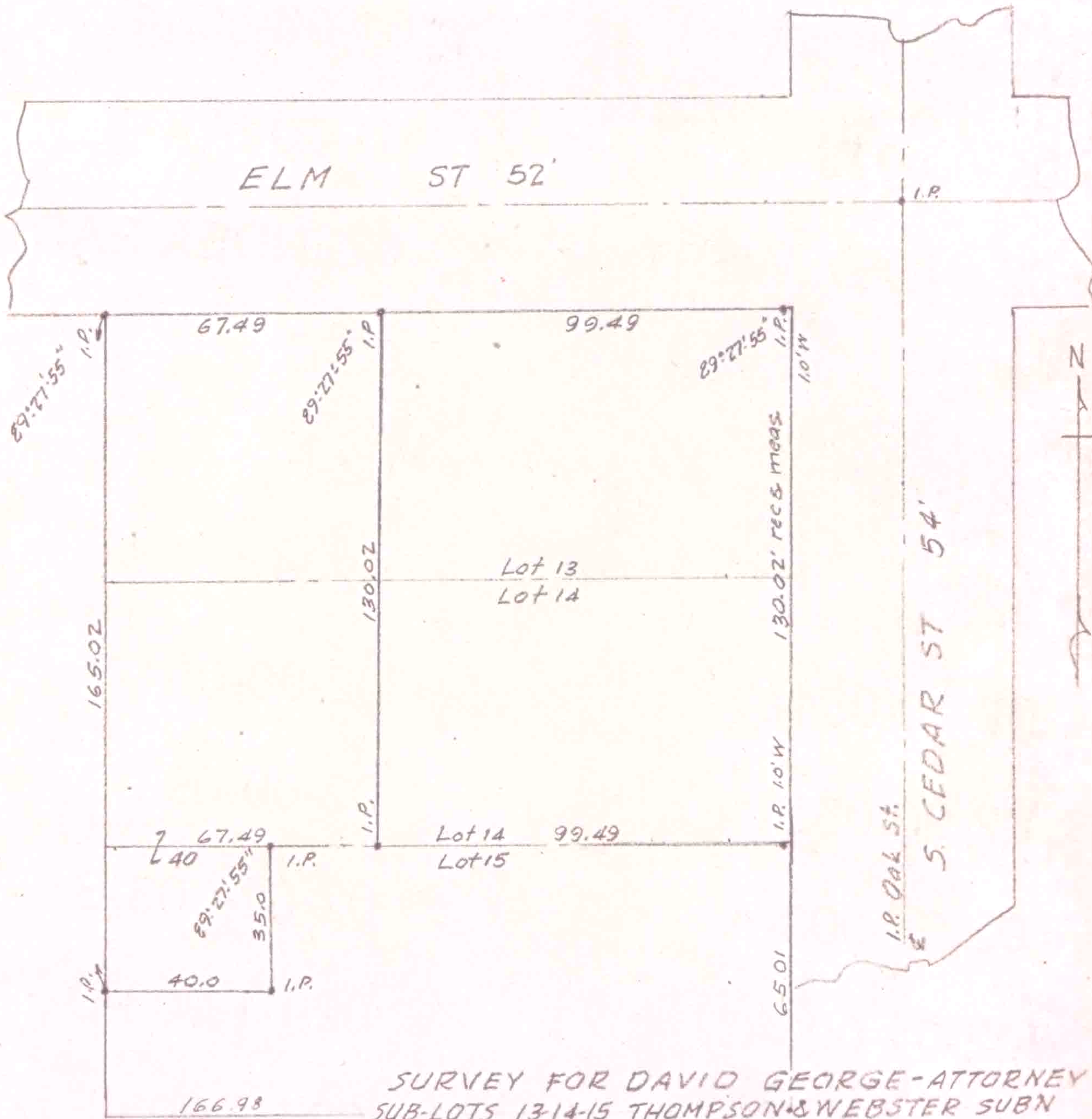
LAUNDON - HUFFMAN - SIMON

CIVIL ENGINEERS - SURVEYORS

200 ROBINSON BUILDING ANNEX
401 W. BROAD ST. ELYRIA, OHIO

THOMAS W. LAUNDON, P.E.
DAVID C. HUFFMAN, P.E.
RODGER G. SIMON, R.S.

MUNICIPAL ENGINEERING
SUBDIVISIONS
LAND SURVEYS



SURVEY FOR DAVID GEORGE-ATTORNEY
SUB-LOTS 13-14-15 THOMPSON & WEBSTER SUBN
P.V. 2 PG. 24 LORAIN CO. RECORD OF PLATS
OBERLIN CITY, LORAIN CO. OHIO
LAUNDON-HUFFMAN-SIMON-SURVEYORS
9-30-1967