

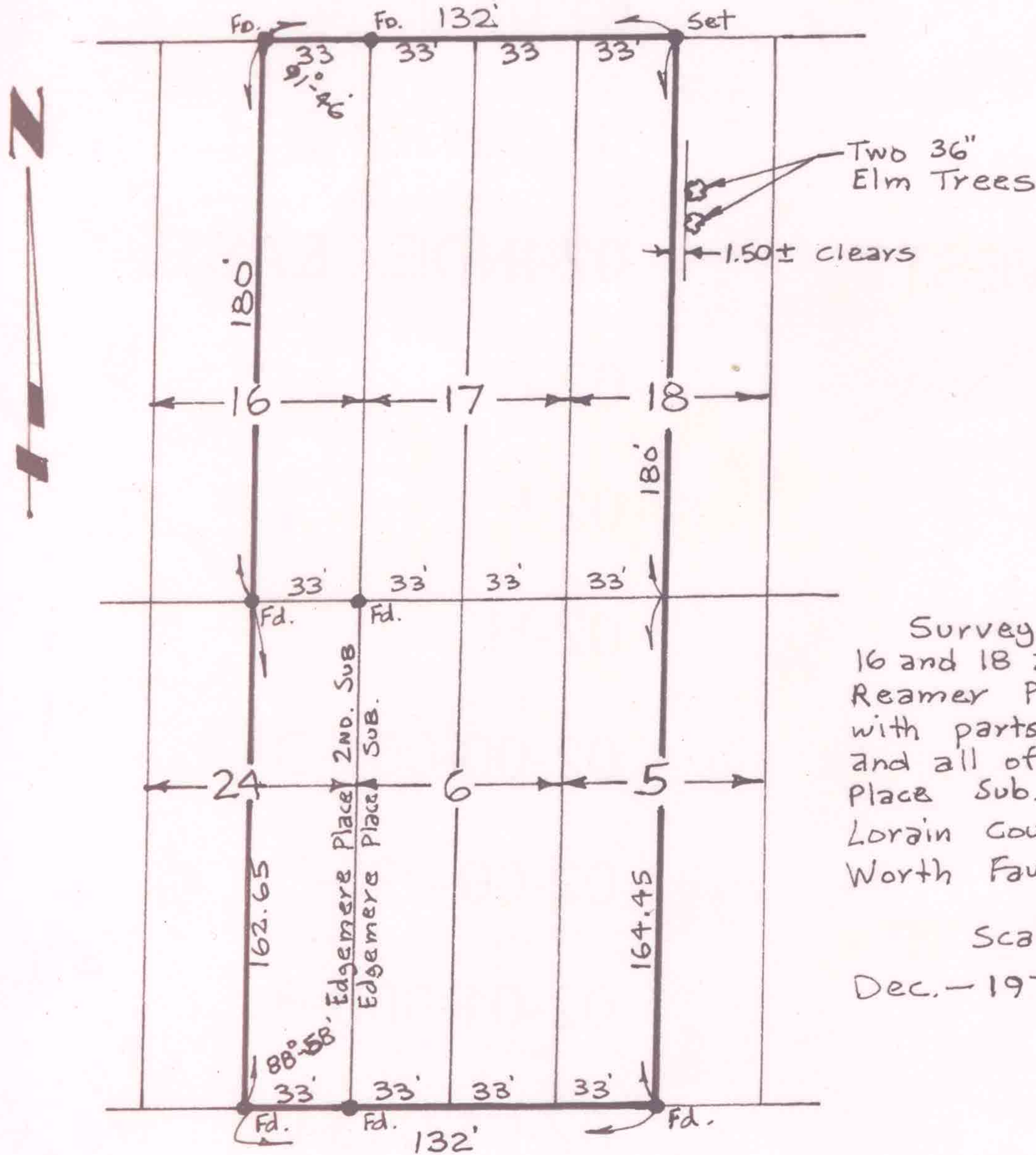
9-00-084-109  
 9-00-084-8  
 Scan # 465712

LAUNDON - HUFFMAN - SIMON  
 CIVIL ENGINEERS - SURVEYORS  
 200 ROBINSON BUILDING ANNEX  
 401 W. BROAD ST. ELYRIA, OHIO  
 517

W. LAUNDON, P.E.  
 HUFFMAN, P.E.  
 RODGER G. SIMON, P.S.

MUNICIPAL ENGINEERING  
 SUBDIVISIONS  
 LAND SURVEYS

REAMER PLACE 70'



Survey of parts of Lots 16 and 18 and all of Lot 17, Reamer Place Sub. together with parts of Lots 5 and 24 and all of Lot 6, Edgemere Place Sub., City of Oberlin, Lorain County, Ohio, for Worth Fauver Jr.

Scale 1" = 60'  
 Dec. - 1970

EDGEMERE PLACE 70'