

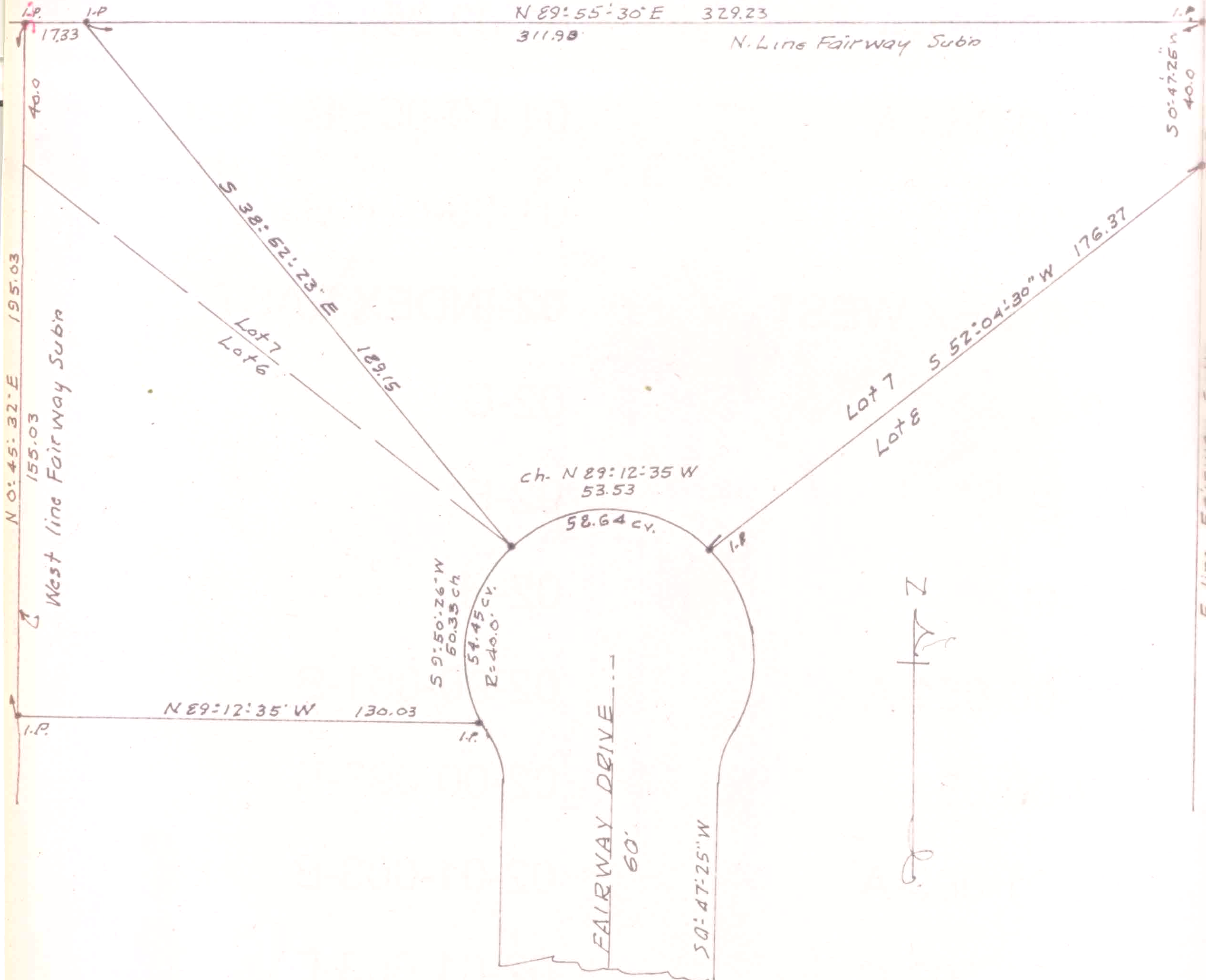
LAUNDON - HUFFMAN - SIMON
 CIVIL ENGINEERS - SURVEYORS

200 ROBINSON BUILDING ANNEX
 401 W. BROAD ST. ELYRIA, OHIO

THOMAS W. LAUNDON, P.E.
 DAVID C. HUFFMAN, P.E.
 RODGER G. SIMON, R.S.

MUNICIPAL ENGINEERING
 SUBDIVISIONS
 LAND SURVEYS

9-00-084-105-086
 9-00-084-105-093
 9-00-084-A
 SCAM# 46567



SURVEY FOR R.E. STURGES
 SUBLOTS 6 & 7 FAIRWAY SUBN
 PLAT VOL. 16 PG. 25 LORAIN CO
 PLAT REC. CITY OF OBERLIN
 SCALE 1" = 40' 9-25-68
 LAUNDON-HUFFMAN-SIMON.