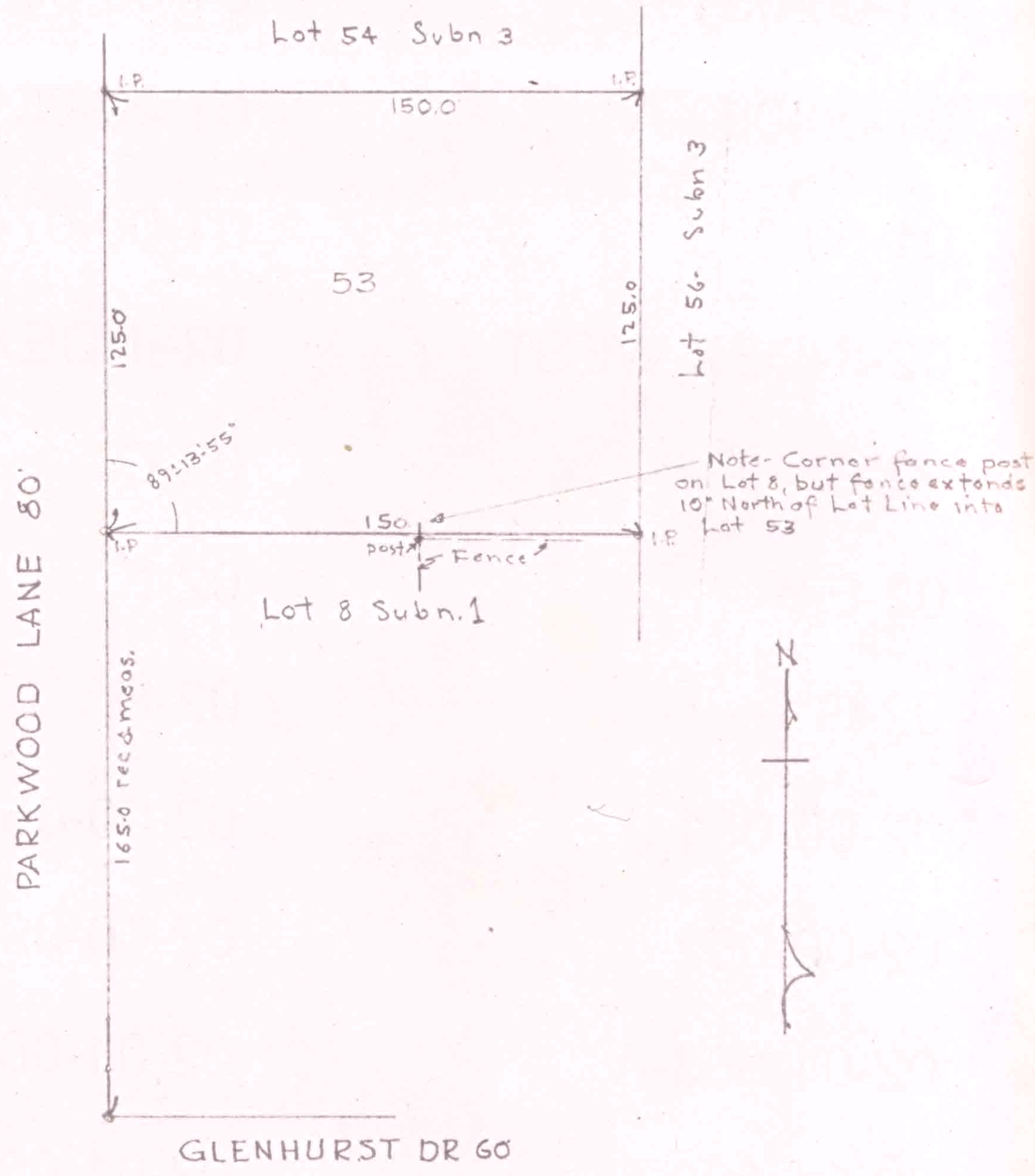


9-00-084-104-003
9-00-084-A
SCAN # 46565

LAUNDON - HUFFMAN - SIMON
CIVIL ENGINEERS - SURVEYORS
146 MIDDLE AVE. ELYRIA, OHIO

THOMAS W. LAUNDON, P.E.
DAVID C. HUFFMAN, P.E.
RODGER G. SIMON, R.S.

MUNICIPAL ENGINEERING
SUBDIVISIONS
LAND SURVEYS



SURVEY FOR NORMAN SPECTOR
LOT 53 ROBIN PARK SUBN N^o 3
PLAT VOL 22, PG. 76 LORAIN CO REC OF
PLATS OBERLIN - LORAIN CO, OHIO.
LAUNDON - HUFFMAN - SIMON - SURVEYORS.
SCALE 1" = 50' 7-20-66