

LAUNDON - HUFFMAN - SIMON

CIVIL ENGINEERS - SURVEYORS

200 ROBINSON BUILDING ANNEX

401 W. BROAD ST. ELYRIA, OHIO

THOMAS W. LAUNDON, P.E.

DAVID C. HUFFMAN, P.E.

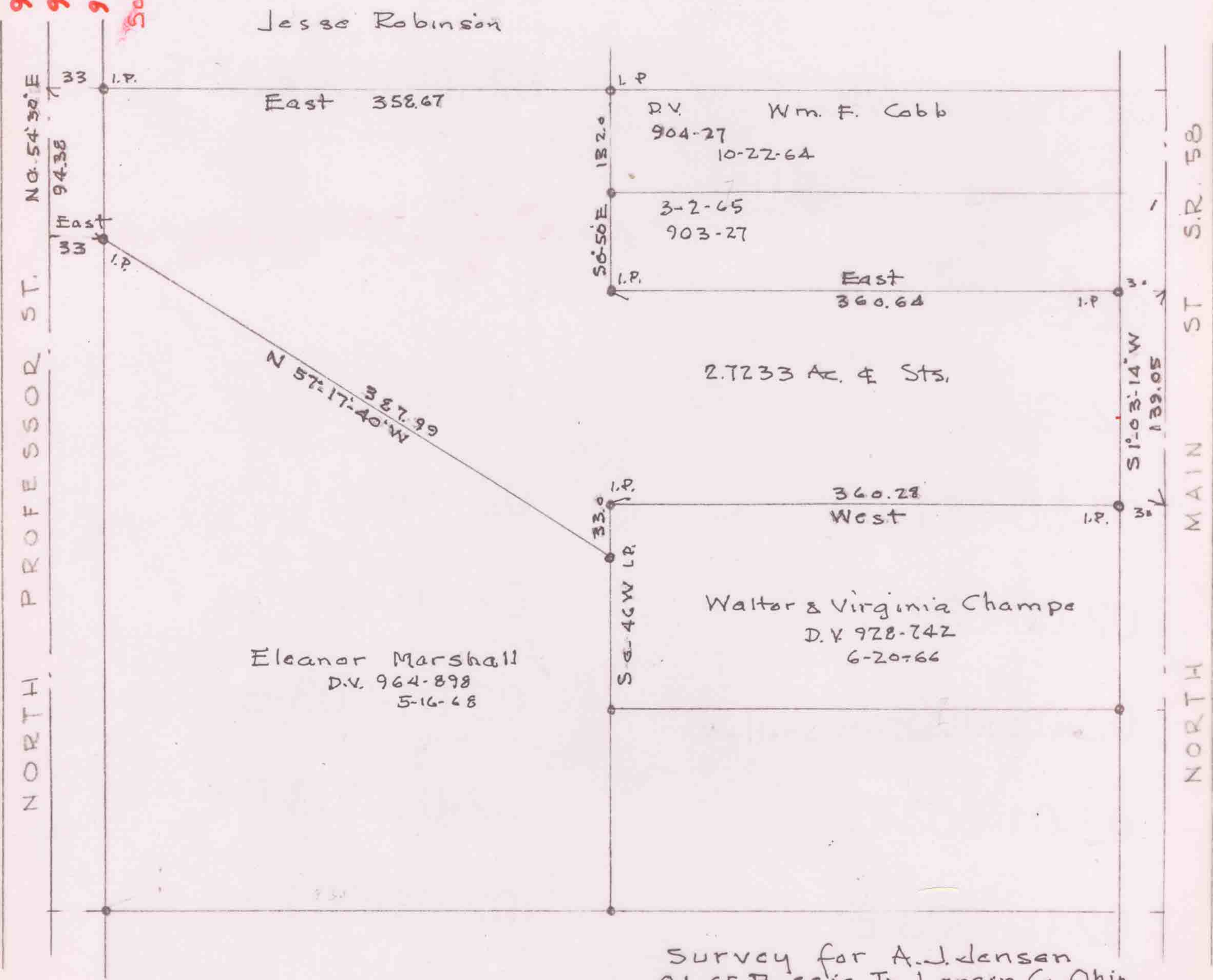
RODGER G. SIMON, R.S.

MUNICIPAL ENGINEERING

SUBDIVISIONS

LAND SURVEYS

9-00-065-000-016  
9-00-065-000-033  
9-00-065-000-034  
9-00-065-000-034  
Scan # 46543



Survey for A. J. Jensen  
O.L. 65 Russia Tp, Lorain Co. Ohio  
Scale 1" = 100' 10/26/68  
Laundon-Huffman-Simon