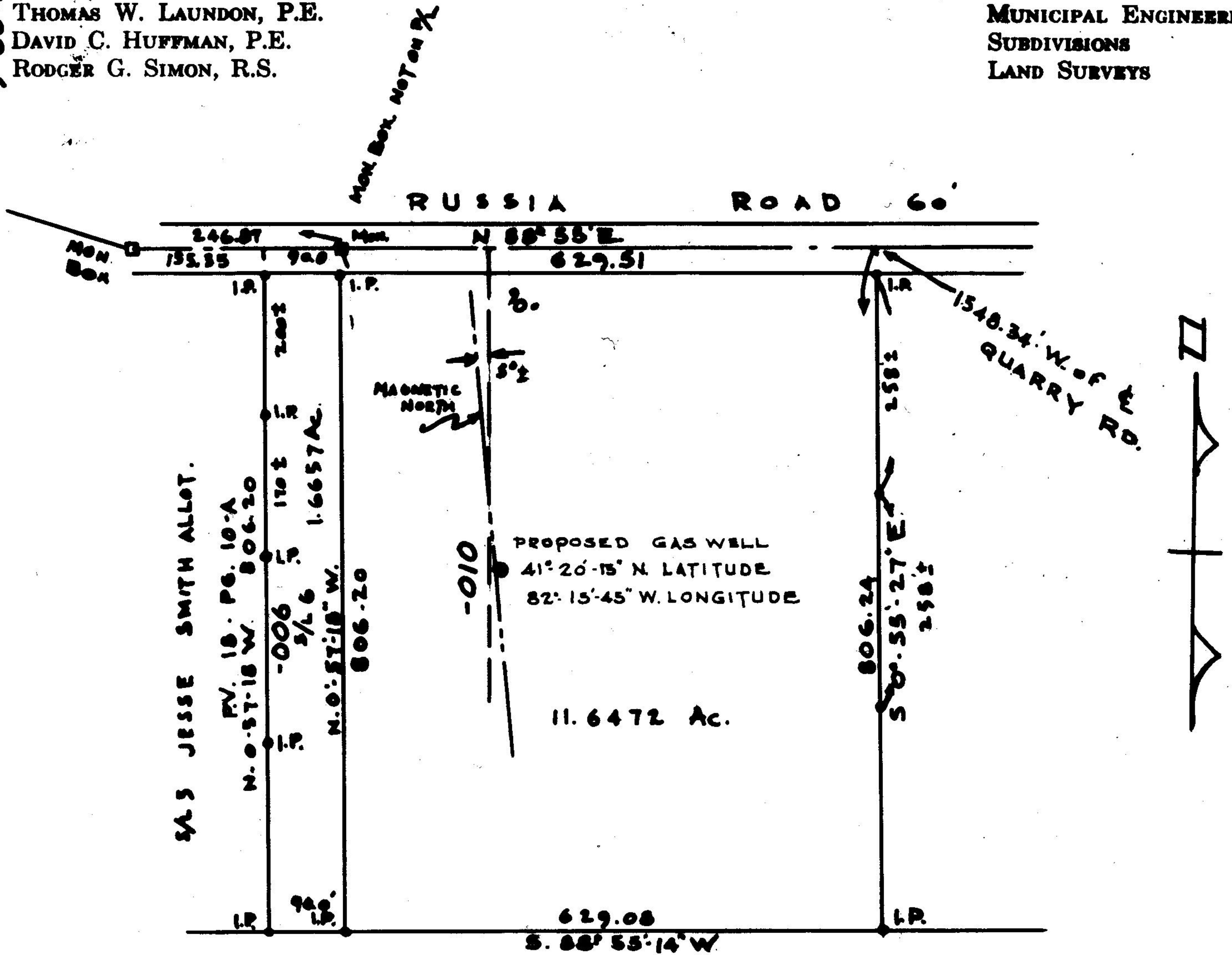


9-00-021-000-006
 9-00-021-000-010
 9-A
 Scan # 46537

LAUNDON - HUFFMAN - SIMON
 CIVIL ENGINEERS - SURVEYORS
 200 ROBINSON BUILDING ANNEX
 401 W. BROAD ST. ELYRIA, OHIO

THOMAS W. LAUNDON, P.E.
 DAVID C. HUFFMAN, P.E.
 RODGER G. SIMON, R.S.

MUNICIPAL ENGINEERING
 SUBDIVISIONS
 LAND SURVEYS



ERNEST & M. GAUMAN
 DV. 261. PG 127

SURVEY FOR JOE BOZICEVICH
 PART OF O.L. 21 RUSSIA TWP.
 LORAIN COUNTY OHIO
 SCALE 1" = 200' AUG. 1967
 LAUNDON, HUFFMAN & SIMON
 REVISED DEC. 1967