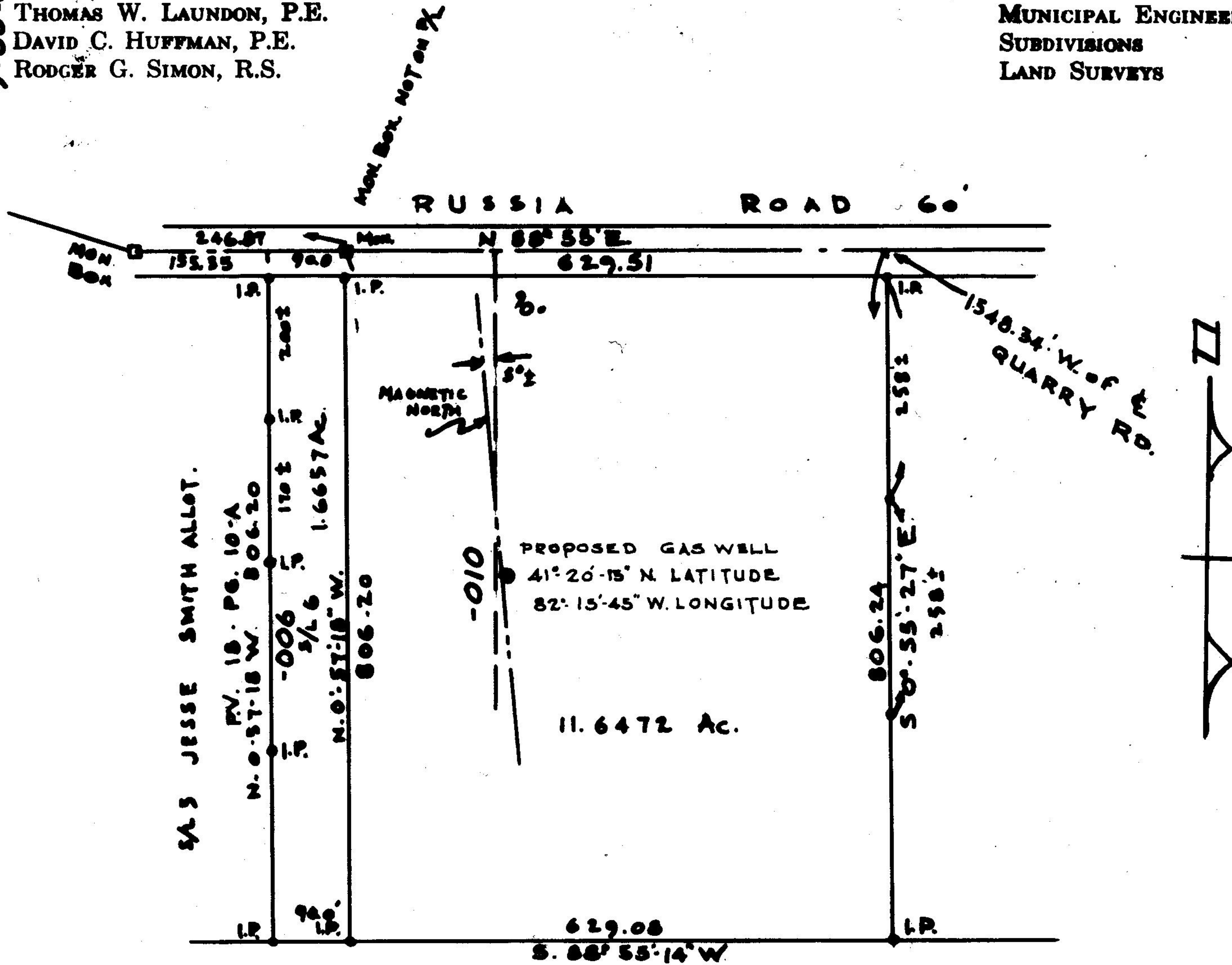


9-00-021-000-006  
 9-00-021-000-010  
 9-A  
 Scan # 46537

LAUNDON - HUFFMAN - SIMON  
 CIVIL ENGINEERS - SURVEYORS  
 200 ROBINSON BUILDING ANNEX  
 401 W. BROAD ST. ELYRIA, OHIO

THOMAS W. LAUNDON, P.E.  
 DAVID C. HUFFMAN, P.E.  
 RODGER G. SIMON, R.S.

MUNICIPAL ENGINEERING  
 SUBDIVISIONS  
 LAND SURVEYS



ERNEST & M. GAUMAN  
 DV. 261. PG 127

SURVEY FOR JOE BOZICEVICH  
 PART OF O.L. 21 RUSSIA TWP.  
 LORAIN COUNTY OHIO  
 SCALE 1" = 200' AUG. 1967  
 LAUNDON, HUFFMAN & SIMON  
 REVISED DEC. 1967